



GLOBAL JOURNAL OF HUMAN SOCIAL SCIENCES  
GEOGRAPHY, GEO-SCIENCES & ENVIRONMENTAL  
Volume 13 Issue 1 Version 1.0 Year 2013  
Type: Double Blind Peer Reviewed International Research Journal  
Publisher: Global Journals Inc. (USA)  
Online ISSN: 2249-460X & Print ISSN: 0975-587X

## Land Degradation Pattern Using Geo-Information Technology for Kot Addu, Punjab Province, Pakistan

By Farooq Ahmad, Qurat-ul-ain Fatima & Kashif Shafique

*University of the Punjab, New Campus, Lahore, Pakistan*

**Abstract** - One of the most important global phenomena that are currently threatening the ecosystem is land degradation and is mainly caused by the climatic changes and human influence. Land degradation is the reduction in the capability of the land to produce benefits from a particular land use under a specified form of land management. Land degradation is the consequence of important processes, which is active in arid and semi-arid ecosystems, where water is the original limiting factor in execution of land application. Remotely sensed data provide timely, accurate and reliable information on degraded lands at definite time intervals in a cost effective manner. In this research, the TM/ETM+ images were used to study changes occurred in the first decade of the new millennium; May 2001 to April 2011. In the present study, efforts have been made to identify and map areas affected by land degradation in Kot Addu tehsil of Muzaffargarh, Punjab province, Pakistan.

**Keywords** : *Change detection, Landsat TM/ETM, land degradation, NDVI, remote sensing.*

**GJHSS-B Classification** : *FOR Code : 050302*



*Strictly as per the compliance and regulations of :*



# Land Degradation Pattern Using Geo-Information Technology for Kot Addu, Punjab Province, Pakistan

Farooq Ahmad <sup>α</sup>, Qurat-ul-ain Fatima <sup>σ</sup> & Kashif Shafique <sup>ρ</sup>

**Abstract** - One of the most important global phenomena that are currently threatening the ecosystem is land degradation and is mainly caused by the climatic changes and human influence. Land degradation is the reduction in the capability of the land to produce benefits from a particular land use under a specified form of land management. Land degradation is the consequence of important processes, which is active in arid and semi-arid ecosystems, where water is the original limiting factor in execution of land application. Remotely sensed data provide timely, accurate and reliable information on degraded lands at definite time intervals in a cost effective manner. In this research, the TM/ETM+ images were used to study changes occurred in the first decade of the new millennium; May 2001 to April 2011. In the present study, efforts have been made to identify and map areas affected by land degradation in Kot Addu *tehsil* of Muzaffargarh, Punjab province, Pakistan. The Normalized Difference Vegetation Index (NDVI), change detection technique was applied upon TM/ETM+ images and further unsupervised classification was used for extraction of information regarding the desert, bare soil, cultivatable land and cultivated land. The NDVIs properties help mitigate a large part of the variations that result from the overall remote-sensing system. The result shows that the desert is 458.73 km<sup>2</sup> (17%), bare soil is 1160.33 km<sup>2</sup> (43%), cultivated land is 647.62 km<sup>2</sup> (24%) and cultivatable land is 431.75 km<sup>2</sup> (16%) in April 2011. The values of the Kappa statistics were used to compare the performance of the classifiers. The data sets were analyzed using ArcGIS software in the Geographic Information System environment and can be implemented in the drylands of Pakistan.

**Keywords** : Change detection, Landsat TM/ETM, land degradation, NDVI, remote sensing.

## 1. INTRODUCTION

Land degradation is an environmental problem that has major ecological-physical and social dimensions (Thomas, 1997), which has been contributing in number of ways. Land degradation or desertification has been high on the list of items of Global Environmental Agenda since 1970s, though the term was first conceived by Aubreville in 1949. Land degradation in arid, semi-arid and sub-humid areas resulting from various factors, including climatic variations and human activities (Glantz and Orlovsky, 1983; Warren and Agnew, 1988; Odingo, 1990; UNEP,

1992; Stiles, 1995; Ahmad, 2002; Kertész, 2009), and its proportion is increasing because of over-exploitation of premature meadows beyond quick rehabilitation (Babaev, 1999).

Remote sensing can offer unbiased view of large areas, with spatially explicit information distribution and time repetition, and has thus been widely used to monitor land degradation pattern and change detection at a regional scale (Quarmby et al., 1993; Baez-Gonzalez et al., 2002; Doraiswamy et al., 2003; Ruecker et al., 2007). Land degradation is usually detected efficiently by remote sensing analysis (Weismiller et al., 1977; Singh, 1989; Lu et al., 2004; Fadhil, 2009). Tappan et al. (1992) and Mout et al. (1997) used the Normalized Difference Vegetation Index (NDVI) as an indicator of land degradation or desertification since it related to vegetation greenness (Al-Bakri and Taylor, 2003).

The NDVI, spectral vegetation index which measures soil and vegetation moisture (Singh, 1989; Lyon et al., 1998; Mambo and Archer, 2007), has been widely used for environmental change monitoring (Young, 1998; Lillesand and Kiefer, 2000; Eastman, 2003; Lillesand et al., 2004; Mambo and Archer, 2007). The index can be used to identify areas showing distressed or degraded vegetation, leading to identification of possible degraded areas (Barrow, 1991; Booth et al., 1994; Mambo and Archer, 2007). The NDVI is used as a proxy; land degradation and improvement is inferred from long-term trends when other factors that may be responsible are accounted for. Rainfall effects may be accounted for by rain-use efficiency and residual trends of NDVI; temperature effects may be accounted for by energy-use efficiency (Bai and Dent, 2007; 2007a). Vegetation production and biomass have been successfully estimated with the NDVI derived from satellite data (Deering et al., 1975; Prince and Tucker, 1986; Tucker and Sellers, 1986; Prince, 1991; Jury et al., 1997; Myneni et al., 1997; Wessels et al., 2004).

The NDVI captures the marked contrast between the strong absorbance in the visible wavelengths and strong reflectance in the near-infrared wavelengths which uniquely characterizes the presence of photosynthetically active vegetation (Tucker, 1979; Wessels et al., 2004). The NDVI is an indicator of vegetation health, because degradation of ecosystem

Author <sup>α</sup>: Department of Geography, University of The Punjab, New Campus, Lahore, Pakistan. E-mail : F.Ahmad@sheffield.ac.uk

Author <sup>σ</sup>: GIS Centre, PUCIT, University of the Punjab, Lahore, Pakistan.

Author <sup>ρ</sup>: Forman Christian College (A Chartered University), Lahore, Pakistan.

vegetation, or a decrease in green, would be reflected in a decrease in NDVI value (Meneses-Tovar, 2011).

The NDVI is highly correlated with vegetation parameters such as green leaf biomass and green leaf area (Justice et al., 1985), and it also is directly related to plant vigor, density, and growth conditions (Holben, 1986), now it is widely accepted as a primary tool for monitoring land degradation (Huang et al., 2010). In arid and semi-arid lands, seasonal sums of multi-temporal NDVI are strongly correlated with vegetation production (Prince and Tucker, 1986; Prince, 1991; Nicholson and Farrar, 1994; Nicholson et al., 1998; Wessels et al., 2004).

The Normalized Difference Vegetation Index (NDVI) is a normalized ratio of the NIR and red bands. The NDVI is computed following the equation:

$$NDVI = \frac{\rho_{NIR} - \rho_{Red}}{\rho_{NIR} + \rho_{Red}}$$

Where,  $\rho_{NIR}$  and  $\rho_{red}$  are the surface bidirectional reflectance factors for their respective MODIS bands. The NDVI is referred to as the 'continuity index' to the existing 20+ year NOAA-AVHRR derived NDVI (Rouse et al., 1973) time series (Moran et al., 1992; Verhoef et al., 1996; Jakubauskas et al., 2001; Huete et al., 2002; Zoran and Stefan, 2006; USGS, 2010; Ahmad, 2012; 2012a; 2012b), which could be extended by MODIS data to provide a longer term data record for use in operational monitoring studies (Chen et al., 2003).

The NDVI (Figure 1) is the most commonly used index of greenness derived from multispectral remote sensing data (USGS, 2010), and is used in several studies on vegetation, since it has been proven to be positively correlated with density of green matter (Townshend et al., 1991; Huete et al., 1997; Huete et al., 2002; Debien et al., 2010; Ahmad, 2012c; 2012d; Zaeen, 2012). The NDVI provides useful information for detecting and interpreting vegetation land cover it has been widely used in remote sensing studies (Dorman and Sellers, 1989; Myneni and Asrar, 1994; Gao, 1996; Sesnie et al., 2008; Karaburun, 2010; Ahmad, 2012e).

### Normalized Difference Vegetation Index

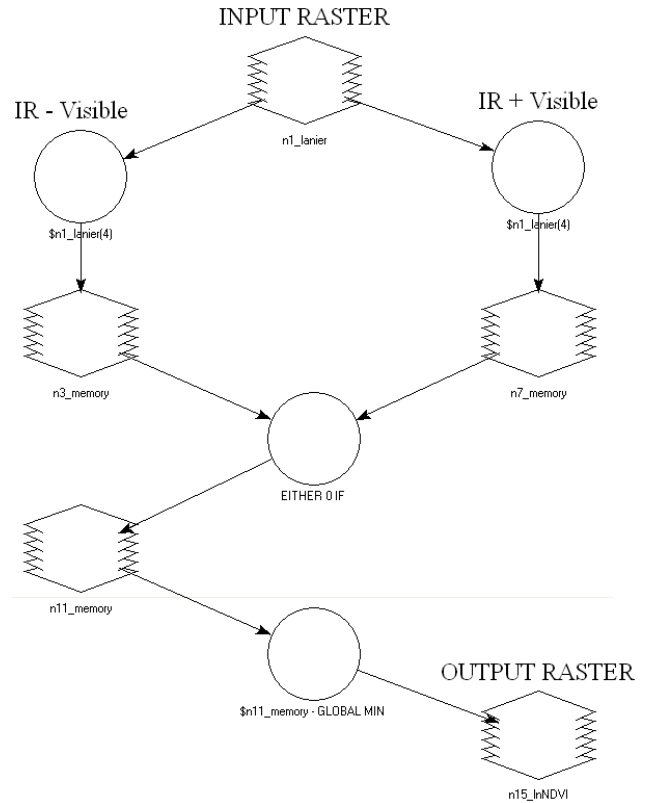


Figure 1 : Schematic view of the Model Maker window, illustrating the calculation of the NDVI

Source:  
<http://geospatial.intergraph.com/products/ERDASIMAGINE/ERDASIMAGINE/Downloads.aspx>

## II. STUDY AREA

The study area (Figure 2) lies in the southern Punjab province of Pakistan from 30° 05' 39" to 30° 45' 57" North latitude and 70° 47' 35" to 71° 33' 37" East longitude.

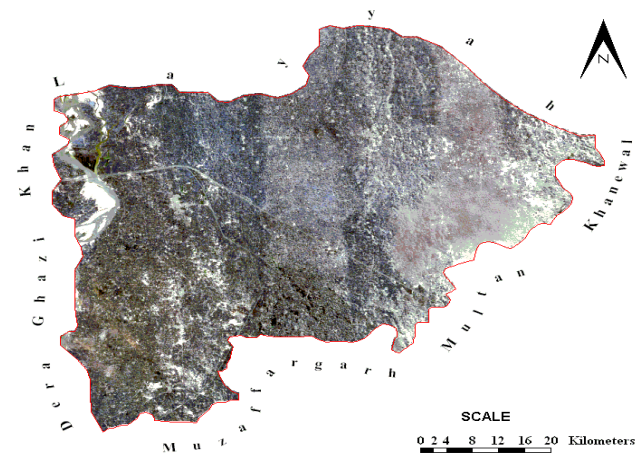


Figure 2 : Kot Addu - Landsat TM 25<sup>th</sup> April, 2011 image

Source : <http://glovis.usgs.gov/>

### III. RESEARCH DESIGN AND METHODS

Los et al. (1994) and Sellers et al. (1996) were the first to derive land surface parameters with realistic seasonal and spatial variations for the globe from NDVI data collected by the AVHRR satellite (Los et al., 2000). Estimation of land surface vegetation parameters from satellite is based on the spectral properties of vegetation; vegetation strongly absorbs visible light, using the energy for photosynthesis, and strongly reflects near-infrared (NIR) radiation (Rouse et al., 1973; Los, 1998; Los et al., 2000; Ahmad, 2012e). The NDVI is based on differences in reflectance in the red region and maximum reflectance in the near infrared; it is the most widely used index in remote sensing (Aguilar et al., 2012; Ahmad, 2012b).

The NDVI values range from -1 to +1; because of high reflectance in the NIR portion of the EMS, healthy vegetation is represented by high NDVI values between 0.1 and 1 (Liu and Huete, 1995; USGS, 2008; 2010). Conversely, non-vegetated surfaces such as water bodies yield negative values of NDVI because of the electromagnetic absorption property of water. Bare soil areas represent NDVI values which are closest to 0 due to high reflectance in both the visible and NIR portions of the EMS (Townshend, 1992; Ahmad, 2012a).

The theoretical basis for the NDVI lies with the red-NIR contrast of vegetation spectral reflectance signatures (Rahman et al., 2004). As the amount of live, green vegetation increases within a pixel, the red reflectance will decrease due to chlorophyll absorption while the non-absorbing NIR spectral region will generally increase especially leaf structure and amount (Baret and Guyot, 1991; Ahmad, 2012e). Because of these properties, the NDVI has become the primary tool for mapping changes in vegetation cover and analysis of the impacts of environmental phenomena. The NDVI can be used not only for accurate description of vegetation classification and vegetation phenology (Tucker et al., 1982; Tarpley et al., 1984; Justice et al., 1985; Lloyd, 1990; Singh et al., 2003; Los et al., 2005) but also effective for monitoring rainfall and drought, estimating net primary production of vegetation, crop growth conditions and crop yields, detecting weather impacts and other events important for agriculture and ecology (Kogan, 1987; Dabrowska-Zielinska et al., 2002; Singh et al., 2003; Chris and Molly, 2006; Baldi et al., 2008; Glenn et al., 2008; Ahmad, 2012e). The NDVI is the most commonly used index (Ahmad, 2012) and serves as a measure of photosynthetic activity within a certain area (Fontana, 2009; Ahmad, 2012b).

The NDVI can be a useful tool to couple climate and vegetation distribution and performance at large spatial and temporal scales (Pettorelli et al., 2005; Aguilar et al., 2012; Ahmad, 2012b) because vegetation vigor and productivity are related to temperature-precipitation and evapotranspiration. The NDVI serves

as a surrogate measure of these factors at the landscape scale (Wang et al., 2003; Groeneveld and Baugh, 2007; Aguilar et al., 2012; Ahmad, 2012b).

Remotely sensing derived NDVI data have been successfully used for monitoring of vegetation activity and environmental changes at regional and global scales (Kowabata et al., 2001; Tucker et al., 2001; Xiao and Moody, 2004; 2005; Propastin and Kappas, 2008), detection of droughts (Kogan, 1997; Propastin and Kappas, 2008), land degradation and desertification studies (Thiam, 2003; Wessels et al., 2004; Propastin and Kappas, 2008).

The NDVI product works optimally with cloud filtering, radiometric calibration, precise geolocation, and a snow mask. In addition, the product performs best using top-of-canopy reflectance inputs, corrected for atmospheric ozone, molecular scattering, aerosol, and water vapour (Huete et al., 2006; Ahmad, 2012b). Various methods using daily NDVI data have been developed for monitoring natural vegetation (Akiyama et al., 2002; Saito et al., 2002; Xiao et al., 2002; Sakamoto et al., 2005; Ahmad, 2012b).

ERDAS imagine 2011 and ArcGIS 10 software were used for application of NDVI model and calculation upon Landsat TM/ETM+ images (path 151, row 39); May 2001, April 2003, May 2009 and April 2011 respectively and change detection technique was applied to explore land degradation pattern for the period of 2001 to 2011 and 2003 to 2009 at Kot Addu (Figure 3). Unsupervised classification was applied upon NDVI images for calculation the area of the desert, cultivatable land, cultivated land and bare soil classes. Further, comparative analysis of unsupervised classification using NDVI images were performed for description and evaluation of land degradation pattern at Kot Addu, Punjab province of Pakistan.

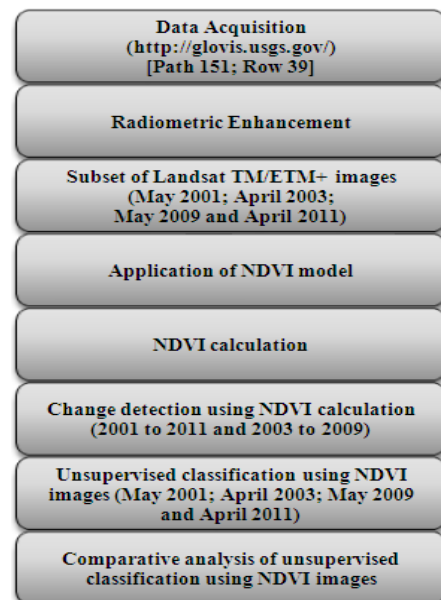


Figure 3 : Scheme for research design and methods

#### IV. RESULTS

Figure 4, 5, 6, 7 (Table 1) shows NDVI values of Landsat TM/ETM+ images for May 2001; April 2003; May 2009 and April 2011 respectively. The NDVI index was applied upon the Landsat TM/ETM+ using ERDAS imagine 2011 software while ArcGIS 10 was used for NDVI calculation. The findings showed that there was a relationship between desert, cultivatable land, cultivated land and bare soil and NDVI values. The NDVI is a measurement of the balance between energy received and energy emitted by objects on Earth. When applied to plant communities, this index establishes a value for how green the area is, that is, the quantity of vegetation present in a given area and its state of health or vigor of growth (Meneses-Tovar, 2011). The significance of NDVI index may vary according to habitat type (Pettorelli et al., 2005; Hamel et al., 2009).

Figure 8 shows change detection during 2001-2011 at Kot Addu, Punjab province, Pakistan. The findings showed that decreased in the desert was 978.55 km<sup>2</sup> (36%), some decrease was 1601.45 km<sup>2</sup> (59%), unchanged was 0.45 km<sup>2</sup>, some increase was 96.17 km<sup>2</sup> (4%), while increased was 21.81 km<sup>2</sup> (1%). Decreased and some decrease > some increase and increased while unchanged was negligible. The change detection technique was performed upon NDVI images; May 2001 and April 2011. The results and accuracy assessment is given in Table 2.

Digital change detection is the process that helps in determining the changes associated with land use and land cover properties with reference to geo-registered multi-temporal remote sensing data (Prenzel and Treitz, 2004; Ramachandra and Kumar, 2004; Ahmad, 2012c).

A variety of change detection techniques have been developed and many have been summarized and reviewed (Singh, 1989; Mouat et al., 1993; Deer, 1995; Coppin and Bauer, 1996; Jensen, 1996; Jensen et al., 1997; Yuan et al., 1998; Serpico and Bruzzone, 1999; Lu et al., 2004; Ahmad, 2012c). Due to the importance of monitoring change of Earth's surface features, research of change detection techniques is an active topic, and new techniques are constantly developed (Lu et al., 2004; Ahmad, 2012c).

Figure 9 shows change detection during 2003-2009 at Kot Addu, Punjab province, Pakistan. The findings showed that decreased in the desert was 230.72 km<sup>2</sup> (9%), some decrease was 2300.76 km<sup>2</sup> (85%), unchanged was 2.35 km<sup>2</sup>, some increase was 150.12 km<sup>2</sup> (6%), while increased was 14.48 km<sup>2</sup>. Decreased and some decrease > some increase and increased while unchanged was negligible. The change detection technique was performed upon NDVI images; April 2003 and May 2009. The results and accuracy assessment is given in Table 2.

Remote sensing provides a viable source of data from which updated land-cover information can be extracted efficiently and cheaply in order to inventory and monitor these changes effectively (Mas, 1999). Remote sensing change detection is a hot issue in recent years (Yan and Xiao-xia, 2010). Change detection is an important application of remote sensing technology. It is a technology ascertaining the changes of specific features within a certain time interval. It provides the spatial distribution of features and qualitative and quantitative information of features changes (Shaoqing and Lu, 2008).

Prior to any change detection, it is imperative that the imagery be geometrically rectified so that the same pixel at one date overlaps the same pixel for the other date (Townshend et al., 1992; Macleod and Congalton, 1998). Usually, change detection involves two or more registered remotely sensed images acquired for the same ground area at different times (Dal and Khorram, 1999). Change detection using remote sensing data is the process of identifying and examining temporal, spatial and spectral changes of pixel signal (Wen and Yang, 2009). Long-term change detection results can provide insight into the stressors and drivers of change, potentially allowing for management strategies targeted toward cause rather than simply the symptoms of the cause (Kennedy et al., 2009).

Digital change detection essentially comprises the quantification of temporal phenomena from multi-date imagery that is most commonly acquired by satellite-based multispectral sensors (Coppin and Bauer, 1996). The critical requirement for successful change detection is that a common radiometric response is required for quantitative analysis of multiple images acquired on different dates (Hall et al., 1991; Coppin and Bauer, 1996). Radiometric correction is to remove or reduce the inconsistency between the values surveyed by sensors and the spectral reflectivity and spectral radiation brightness of the objects (Jianya et al., 2008).

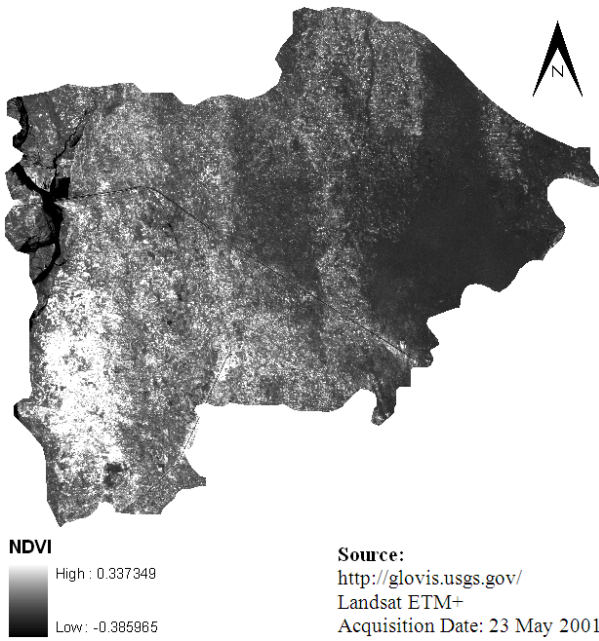


Figure 4 : NDVI 2001, Kot Addu, Pakistan

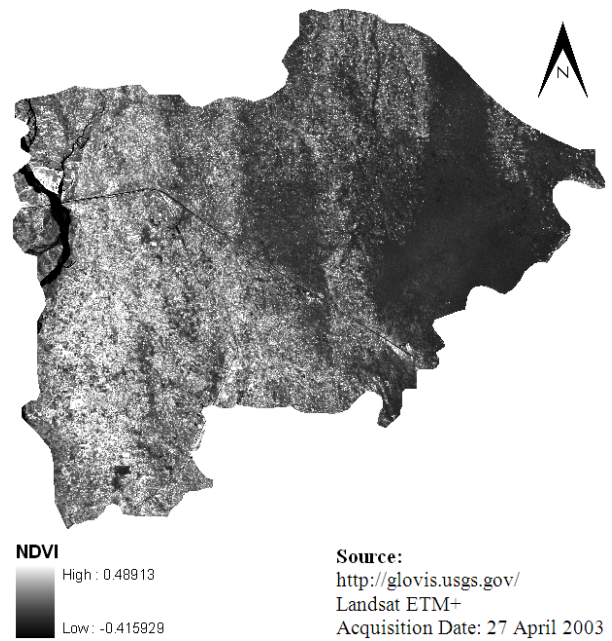


Figure 5 : NDVI 2003, Kot Addu, Pakistan

LEGEND

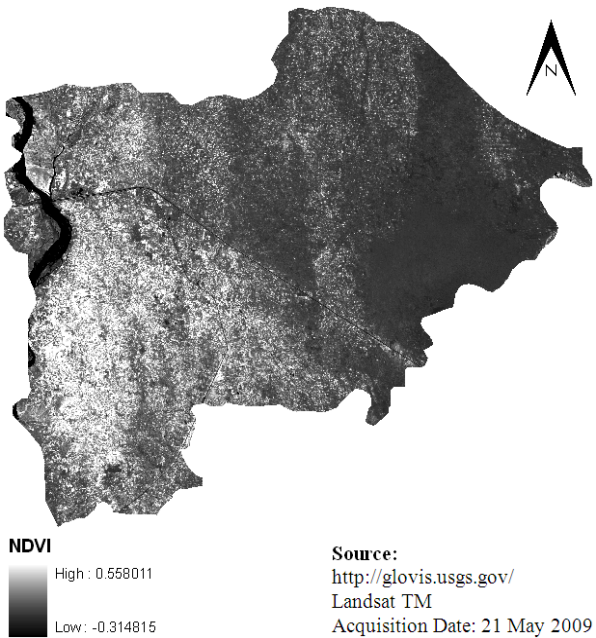
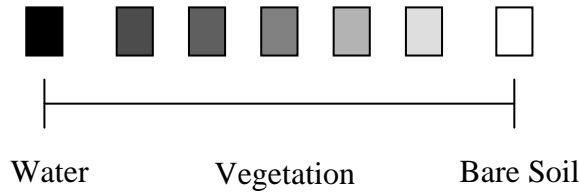


Figure 6 : NDVI 2009, Kot Addu, Pakistan

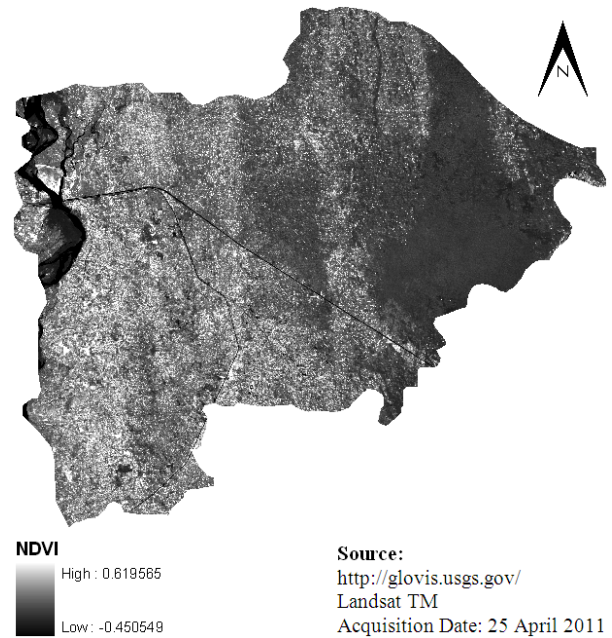


Figure 7 : NDVI 2011, Kot Addu, Pakistan

Table 1 : NDVI values of Landsat images

Image Acquisition Date	Maximum NDVI	Minimum NDVI	Mean NDVI	Standard Deviation
23 May, 2001 (Landsat ETM+)	0.34	-0.39	-0.09	0.08
27 April, 2003 (Landsat ETM+)	0.49	-0.42	-0.05	0.08
21 May, 2009 (Landsat TM)	0.56	-0.31	0.05	0.10
25 April, 2011 (Landsat TM)	0.62	-0.45	0.06	0.09

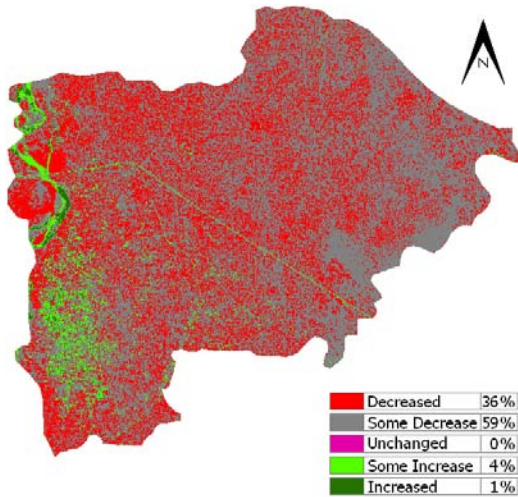


Figure 8 : Change detection during 2001-2011 at Kot Addu, Pakistan

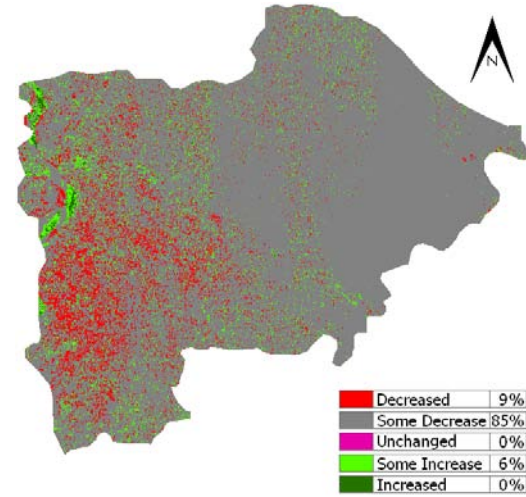


Figure 9 : Change detection during 2003-2009 at Kot Addu, Pakistan

Table 2 : Change detection using NDVI calculation

Classes	During 2001 to 2011			During 2003 to 2009		
	Area (km <sup>2</sup> )	Area (%)	Accuracy Assessment (%)	Area (km <sup>2</sup> )	Area (%)	Accuracy Assessment (%)
Decreased	978.55	36	85.79	230.72	9	87.31
Some Decrease	1601.45	59	92.14	2300.76	85	90.19
Unchanged	0.45	Negligible	89.32	2.35	Negligible	87.22
Some Increase	96.17	4	85.16	150.12	6	88.45
Increased	21.81	1	91.47	14.48	Negligible	92.21
SUM	2698.43	100	-	2698.43	100	-

Figure 10 shows comparative change detection, during 2001 to 2011 and during 2003 to 2009. The findings showed that sufficient decrease in desert area at Kot Addu, Punjab province, Pakistan. The area of the desert decreased from 1376.20 km<sup>2</sup>, May 2001 to 458.73 km<sup>2</sup>, April 2011 (Table 3). Change information of the earth's surface is becoming more and more important in monitoring the local, regional and global resources and environment. The large collection of past and present remote sensing imagery makes it possible to analyze spatio-temporal pattern of environmental elements and impact of human activities in past decades (Jianya et al., 2008; Ahmad, 2012c). The wider availability of large archives of historical images also makes long-term change detection and modelling possible (Jianya et al., 2008). Change detection has become a major application of remotely sensed data

because of repetitive coverage at short intervals and consistent image quality (Mas, 1999). Over the past years, researchers have put forward large numbers of change detection techniques of remote sensing image and summarized or classified them from different viewpoints (Singh, 1989; Lu et al., 2004; Jianya et al., 2008). The problem of availability of cloud-free images in sub-tropical regions is very common and has been reported by many authors (Ducros-Gambart and Gastellu-Etchegorry, 1984; Nelson and Holben, 1986; Pilon et al., 1988; Alwashe and Bokhari, 1993; Jha and Unni, 1994; Mas, 1999).

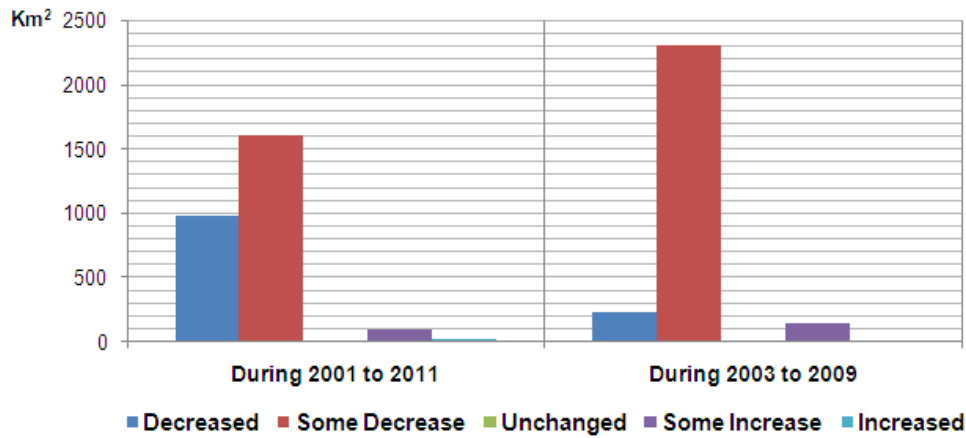


Figure 10 : Comparative change detection at Kot Addu, Pakistan

Figure 11 shows unsupervised classification using NDVI image 2001. The findings showed that the desert was 1376.20 km<sup>2</sup> (51%), bare soil 1241.28 km<sup>2</sup> (46%), and cultivated land 53.97 km<sup>2</sup> (2%) while the cultivatable land was 26.98 km<sup>2</sup> (1%). The accuracy assessment is given in Table 3.

The approach unsupervised classification which is part of post classification comparison method or direct classification method. This approach is based on the natural groupings of the spectral properties of the pixels which are usually selected by the RS software without any influence from the users (Al-Awadhi et al., 2011).

Figure 12 shows unsupervised classification using NDVI image 2003. The findings showed that the desert was 1214.29 km<sup>2</sup> (45%), bare soil 1268.27 km<sup>2</sup> (47%), and cultivated land 188.89 km<sup>2</sup> (7%) while the cultivatable land was 26.98 km<sup>2</sup> (1%). The accuracy assessment is given in Table 3. The accurate assessment of land degradation, their vulnerability to drought, or degree of degradation, requires information about the dominant vegetation types including spatial variations in coverage (Le Houérou, 1996; Geerken et

al., 2005). This clearly emphasizes the need for a classification technique that gives more consideration to the biophysical information contained in NDVI time series, incorporating both vegetation type and spatial intra-class coverage variability (Geerken et al., 2005).

Figure 13 shows unsupervised classification using NDVI image 2009. The findings showed that the desert was 782.54 km<sup>2</sup> (29%), bare soil 1295.25 km<sup>2</sup> (48%), and cultivated land 269.84 km<sup>2</sup> (10%) while the cultivatable land was 350.80 km<sup>2</sup> (13%). The accuracy assessment is given in Table 3.

Unsupervised context-sensitive technique for change-detection in multitemporal remote sensing images (Patra et al., 2007). Automated classification can be performed upon NDVI by unsupervised cluster analysis (Sader and Winne, 1992; Sader et al., 2003).

Figure 14 shows unsupervised classification using NDVI image 2011. The findings showed that the desert was 458.73 km<sup>2</sup> (17%), bare soil 1160.33 km<sup>2</sup> (43%), and cultivated land 647.62 km<sup>2</sup> (24%) while the cultivatable land was 431.75 km<sup>2</sup> (16%). The accuracy assessment is given in Table 3.

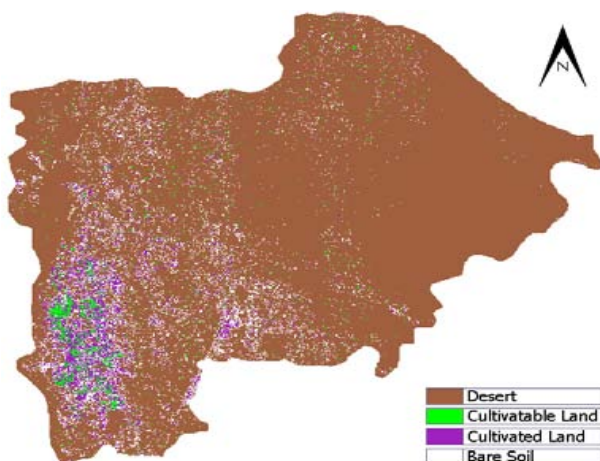


Figure 11 : Unsupervised classification using NDVI image 2001

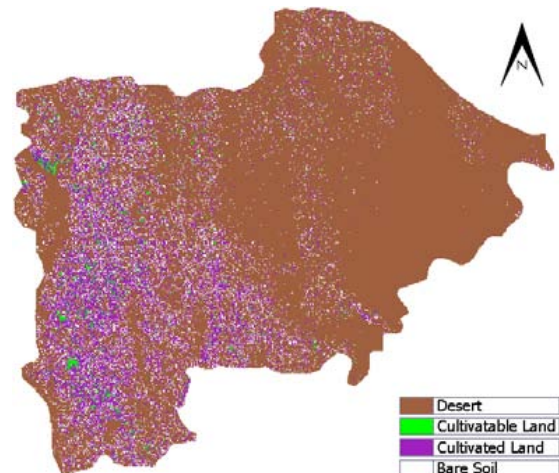


Figure 12 : Unsupervised classification using NDVI image 2003



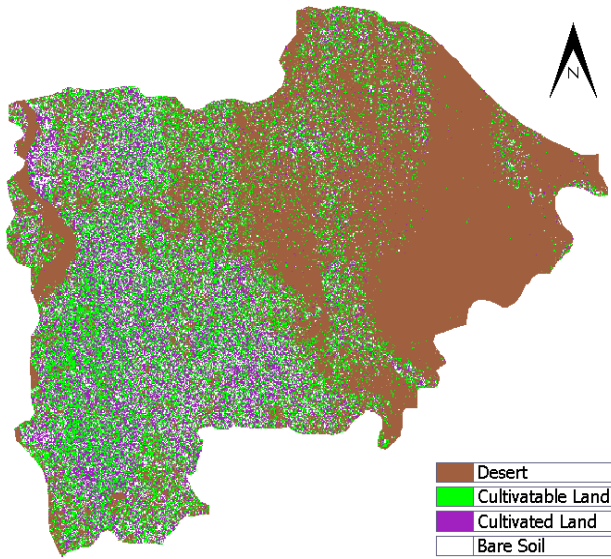


Figure 13 : Unsupervised classification using NDVI image 2009

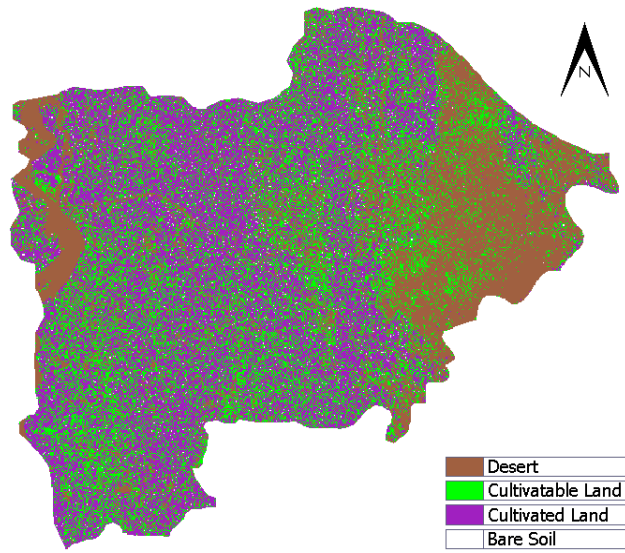


Figure 14 : Unsupervised classification using NDVI image 2011

Table 3 : Unsupervised classification using NDVI images

Image Acquisition Date	Classes	Area (km <sup>2</sup> )	Area (%)	Accuracy Assessment (%)
23 May, 2001 (Landsat ETM+)	Desert	1376.20	51	91.23
	Bare Soil	1241.28	46	87.65
	Cultivated Land	53.97	2	85.42
	Cultivable Land	26.98	1	87.39
	SUM	2698.43	100	-
27 April, 2003 (Landsat ETM+)	Desert	1214.29	45	89.61
	Bare Soil	1268.27	47	90.73
	Cultivated Land	188.89	7	87.94
	Cultivable Land	26.98	1	86.92
	SUM	2698.43	100	-
21 May, 2009 (Landsat TM)	Desert	782.54	29	92.13
	Bare Soil	1295.25	48	88.76
	Cultivated Land	269.84	10	86.14
	Cultivable Land	350.80	13	89.63
	SUM	2698.43	100	-
25 April, 2011 (Landsat TM)	Desert	458.73	17	90.81
	Bare Soil	1160.33	43	92.37
	Cultivated Land	647.62	24	87.71
	Cultivable Land	431.75	16	85.49
	SUM	2698.43	100	-

Figure 15 shows comparative analysis of unsupervised classification using NDVI images for the period May 2001 to April 2011. The findings showed that the area of the desert was decreased from 1376.20 km<sup>2</sup> (51%) in May 2001 to 458.73 km<sup>2</sup> (17%) in April 2011, the bare soil decreased from 1241.28 km<sup>2</sup> (46%) in May 2001 to 1160.33 km<sup>2</sup> (43%) in April 2011, while cultivated land increased from 53.97 km<sup>2</sup> (2%) in May 2001 to 647.62 km<sup>2</sup> (24%) in April 2011, cultivatable land also increased from 26.98 km<sup>2</sup> (1%) in May 2001 to 431.75 km<sup>2</sup> (16%) in April 2011 (Table 3).

As the use of space and computer technology developed, humankind has a great advantage of produce this much important research projects with the help of technology in an easier, more accurate way within less time than other ways. As a result all these can have a very effective role in helping the country to increase the amount and the quality of agricultural products (Akkartala et al., 2004; Ahmad, 2012).

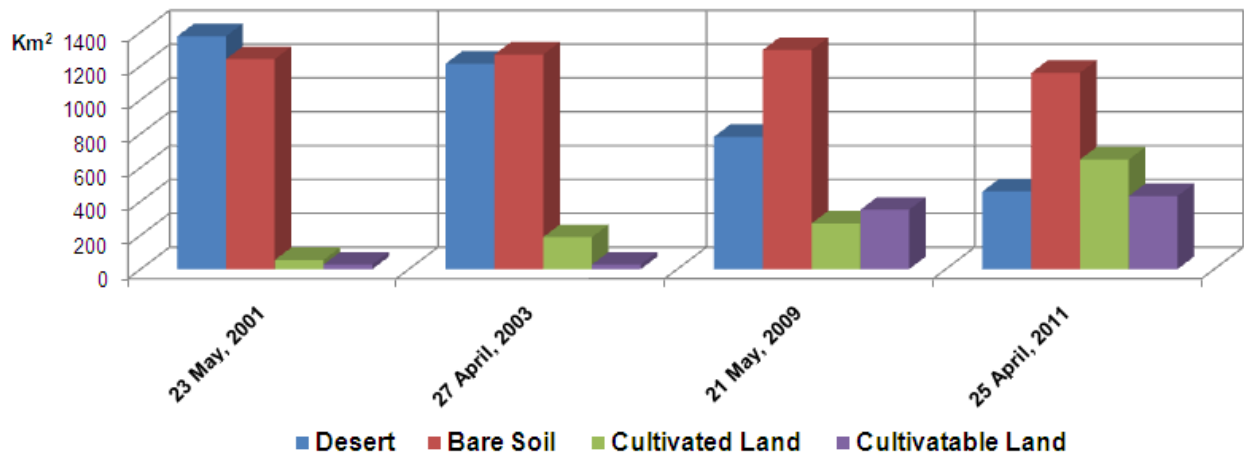


Figure 15 : Comparative analysis of unsupervised classification using NDVI images

## V. DISCUSSION AND CONCLUSIONS

Remote sensing change detection techniques can be broadly classified as either pre or post classification change methods (Lunetta et al., 2006). The NDVI is the most commonly used of all the VIs tested and its performance, due to non-systematic variation as described by Huete and Liu (1994) and Liu and Huete (1995). The NDVI suppresses differential solar illumination effects of slope and aspect orientation (Lillesand and Kiefer, 1994; Sader et al., 2001) and helps to normalize differences in brightness values when processing multiple dates of imagery (Singh, 1986; Lyon et al., 1998; Sader et al., 2001).

Many studies have found the NDVI to be unstable, varying with soil, sun-view geometry, atmospheric conditions, and the presence of dead material, as well as with changes within the canopy itself (Sellers, 1985; Jackson and Pinter, 1986; Jackson and Huete, 1991; Myneni et al., 1992; Huete and Liu, 1994). As a result, several studies and developments have sought to improve upon the NDVI by correcting for soil and atmospheric sources of variance (Huete and Liu, 1994). The improved variants to the NDVI equation attempt to either incorporate a "soil" adjustment factor or a "blue" band for atmospheric normalization (Huete and Liu, 1994). The soil adjusted vegetation index (SAVI) introduced a soil calibration factor  $L$  to the NDVI equation to account for first-order soil-vegetation optical interactions and differential red and NIR extinction through the canopy (Huete, 1988; Huete and Liu, 1994).

Land cover classification techniques can be straightforward but at the same time very complicated. Depending on the methodology used, each classification technique can give different results. If attention is not given, the classification results could be misleading and erroneous (Nicandrou, 2010). The methodology presented in this research paper has several desirable properties. Since it treats each pixel individually without setting thresholds or empirical

constants, the method is globally applicable (Vermote and Vermeulen, 1999; Vermote et al., 2002; Li and Guo, 2012; Ahmad, 2012c). In practice, different algorithms are often compared to find the optimal change detection algorithm for a specific application. A limitation of image differencing or ratio image differencing as a change detection method is that it does not specify the 'from-to' land cover type change information (Jensen, 1996; Sader et al., 2001), but only detects that a change did or did not occur (Sader et al., 2001). The overall accuracy of the change detection results exceeded 85%, the level that the US Geological Survey (Anderson et al., 1976; Sader et al., 2001) uses as a threshold to define acceptability (Sader et al., 2001). The approaches used in this study can be applied to other areas to examine land degradation pattern in Pakistan.

## VI. ACKNOWLEDGEMENTS

The author wishes to thank his respected mentor Dr. Robert Bryant, Sheffield Centre for International Drylands Research, Department of Geography, The University of Sheffield for review and providing valuable comments on draft-version of this paper.

## REFERENCES RÉFÉRENCES REFERENCIAS

1. Aguilar, C., Zinnert, J.C., Polo, M.J. and Young, D.R. (2012). NDVI as an indicator for changes in water availability to woody vegetation. *Ecological Indicators*, Vol. 23, pp.290-300.
2. Ahmad, F. (2002). Socio-economic dimensions and ecological destruction in Cholistan. Ph.D. dissertation, Department of Geography, University of Karachi, Pakistan, p.97. URL:<http://eprints.hec.gov-pk/801/01/517.html.htm>. (Accessed on January 22, 2013).
3. Ahmad, F. (2012). Spectral vegetation indices performance evaluated for Cholistan Desert. *Journal of Geography and Regional Planning*, Vol. 5(6), pp.165-172.

4. Ahmad, F. (2012a). Landsat ETM+ and MODIS EVI/NDVI data products for climatic variation and agricultural measurements in Cholistan Desert. *Global Journals of Human Social Science: Geography & Environmental Geo-Sciences*, Vol. 12(13), pp.1-11.
5. Ahmad, F. (2012b). Phenologically-tuned MODIS NDVI-based time series (2000-2012) for monitoring of vegetation and climatic change in North-Eastern Punjab, Pakistan. *Global Journals of Human Social Science: Geography & Environmental Geo-Sciences*, Vol. 12(13), pp.37-54.
6. Ahmad, F. (2012c). NOAA AVHRR NDVI/MODIS NDVI predicts potential to forest resource management in Çatalca district of Turkey. *Global Journal of Science Frontier Research: Environment & Earth Sciences*, Vol. 12(3), pp.29-46.
7. Ahmad, F. (2012d). A review of remote sensing data change detection: Comparison of Faisalabad and Multan Districts, Punjab Province, Pakistan. *Journal of Geography and Regional Planning*, Vol. 5(9), pp.236-251.
8. Ahmad, F. (2012e). NOAA AVHRR satellite data for evaluation of climatic variation and vegetation change in the Punjab Province, Pakistan. *Journal of Food, Agriculture & Environment*, Vol. 10(2), pp.-1298-1307.
9. Akiyama, T., Kawamura, K., Fukuo, A. and Chen, Z.Z. (2002). Sustainable grassland management using GIS, GPS and remote sensing data in Inner Mongolia. In: Uchida, S., Youqi, C. and Saito, G. (Eds.), *Application on remote sensing technology for the management of agricultural resources*, Beijing' China Agricultural Sciencetech Press, pp.13-19.
10. Akkartala, A., Türüdüa, O. and Erbekb, F.S. (2004). Analysis of changes in vegetation biomass using multitemporal and multisensor satellite data. *Proceedings of XXXV ISPRS Congress*, 12-23 July 2004, Istanbul, Turkey. URL: <http://www.isprs.org/proceedings/XXXV/congress/yf/papers/946.pdf>. (Assessed on September 17, 2011).
11. Al-Awadhi, T., Al-Shukili, A. and Al-Amri, Q. (2011). The use of remote sensing & geographical information systems to identify vegetation: The case of Dhofar Governorate (Oman). URL: <http://www.isprs.org/proceedings/2011/ISRSE-34/211104015Final00-239.pdf>. (Assessed on January 26, 2013).
12. Al-Bakri, J.T. and Taylor, J.C. (2003). Application of NOAA AVHRR for monitoring vegetation conditions and biomass in Jordan. *Journal of Arid Environments*, Vol. 54(3), pp.579-593.
13. Alwashe, M.A. and Bokhari, A.Y. (1993). Monitoring vegetation changes in Al Madinah, Saudi Arabia, using Thematic Mapper data. *International Journal of Remote Sensing*, Vol. 14(2), pp.191-197.
14. Anderson, J.R., Hardy, E.E., Roach, J.T. and Whitmer, R.E. (1976). A land use and land cover classification system for use with remote sensor data. US Geological Survey: Professional Paper 964, Washington, DC.
15. Aubréville, A. (1949). *Climats, forêts et désertification de l'Afrique tropicale*. Société d'Editions Géographiques, Maritimes et Coloniales, Paris, France, p.351.
16. Babaev, A.G. (1999). Desertification processes and ways of their control in the Aral Sea Basin. *Proceedings of an International Conference on Desertification and Soil Degradation*, 11-15 November 1999, Moscow, pp.99-107.
17. Báez-González, A.D., Chen, P.Y., Tiscareño-López, M. and Srinivasan, R. (2002). Using satellite and field data with crop growth modeling to monitor and estimate corn yield in Mexico. *Crop Science*, Vol. 42(6), pp.1943-1949.
18. Bai, Z.G. and Dent, D.L. (2007). Land degradation and improvement in South Africa. 1. Identification by remote sensing. Report 2007/03, ISRIC – World Soil Information, Wageningen.
19. Bai, Z.G. and Dent, D.L. (2007a). Land degradation and improvement in Argentina 1. Identification by remote sensing. Report 2007/05, ISRIC – World Soil Information, Wageningen.
20. Baldi, G., Nosoetto, M.D., Aragón, R., Aversa, F., Paruelo, J.M. and Jobbágy, E.G. (2008). Long-term satellite NDVI datasets: Evaluating their ability to detect ecosystem functional changes in South America. *Sensors*, Vol. 8, pp.5397-5425.
21. Baret, F. and Guyot, G. (1991). Potentials and limits of vegetation indices for LAI and APAR assessment. *Remote Sensing of Environment*, Vol. 35, pp.161-173.
22. Barrow, C.J. (1991). *Land Degradation: Development and breakdown of terrestrial environments*. Cambridge University Press, Cambridge, p.295.
23. Booth, A., McCullum, J., Mpinga, J. and Mukute, M. (1994). *State of the environment in Southern Africa*. Southern African Research and Documentation Centre (SARDC), Harare, Zimbabwe. URL: [http://rmportal.net/library/content/frame/opinion3.pdf/at\\_download/file](http://rmportal.net/library/content/frame/opinion3.pdf/at_download/file). (Accessed on January 20, 2013).
24. Chen, P.Y., Srinivasan, R., Fedosejevs, G. and Kiniry, J.R. (2003). Evaluating different NDVI composite techniques using NOAA-14 AVHRR data. *International Journal of Remote Sensing*, Vol. 24, pp.3403-3412.
25. Chris, C.F. and Molly, E.B. (2006). Intra-seasonal NDVI change projections in semi-arid Africa. *Remote Sensing of Environment*, Vol. 101, pp.249-256.
26. Coppin, P.R. and Bauer, M.E. (1996). Digital change detection in forest ecosystems with remote sensing imagery. *Remote Sensing Reviews*, Vol. 13, pp.207-234.
27. Dabrowska-Zielinska, K., Kogan, F., Ciolkosz, A., Gruszczynska, M. and Kowalik, W. (2002). Mode-

- illing of crop growth conditions and crop yield in Poland using AVHRR-based indices. *International Journal of Remote Sensing*, Vol. 23, pp.1109-1123.
28. Dal, X.L. and Khorram, S. (1999). Remotely sensed change detection based on artificial neural networks. *Photogrammetric Engineering & Remote Sensing*, Vol. 65(10), pp.1187-1194.
  29. Debien, A., Neerinckx, S., Kimaro, D. and Gulinck, H. (2010). Influence of satellite-derived rainfall patterns on plague occurrence in northeast Tanzania. *International Journal of Health Geographics*, Vol. 9, pp.1-10.
  30. Deer, P.J. (1995). Digital change detection techniques: Civilian and military applications. *International Symposium on Spectral Sensing Research 1995 Report*, Greenbelt, M.D: Goddard Space Flight Center. URL: <http://ftpwww.gsfc.nasa.gov/ISSSR-95/digitalc.htm>. (Accessed on November 15, 2012).
  31. Deering, D.W., Rouse, J.W., Haas, R.H. and Schell, J.A. (1975). Measuring "forage production" of grazing units from Landsat MSS data. *Proceedings of the 10th International Symposium on remote sensing of environment*, 6-10 October 1975, Ann Arbor, MI. pp.1169-1178.
  32. Doraiswamy, P.C., Hatfield, J.L., Jackson, T.J., Akhmedov, B., Prueger, J. and Stern, A. (2003). Crop conditions and yield simulations using Landsat and MODIS. *Remote Sensing of Environment*, Vol. 92, pp.548-559.
  33. Dorman, J.L. and Sellers, P.J. (1989). A Global climatology of albedo, roughness length and stomatal resistance for atmospheric general circulation models as represented by the simple biosphere model (SiB). *Journal of Applied Meteorology*, Vol. 28, pp.833-855.
  34. Ducros-Gambart, D. and Gastellu-Etchegorry, J.P. (1984). Automatic analysis of bi-temporal Landsat data: an application to the study of the evolution of vegetation covered areas in a tropical region. Guyenne, T.D. and Hunt, J.J. (Eds.), *Proceeding of IGARSS Symposium*, European Space Agency SP-215, Paris, pp.187-192.
  35. Eastman, J.R. (2003). *Idrisi Kilimanjaro: Guide to GIS and Image Processing*. Clark Labs, Clark University, Worcester, MA. URL: [http://www.gis.unbc.ca/help/software/idrisi/kilimanjaro\\_manual.pdf](http://www.gis.unbc.ca/help/software/idrisi/kilimanjaro_manual.pdf). (Accessed on January 20, 2013).
  36. ERDAS IMAGINE Inc. (2010). *Professional Tour Guides*. URL: <http://geospatial.intergraph.com/products/ERDASIMAGINE/ERDASIMAGINE/Downloads.aspx>. (Accessed on February 18, 2013).
  37. Fadhil, A.M. (2009). Land degradation detection using geo-information technology for some sites in Iraq. *Journal of Al Nahrain University-Science*, Vol. 12(3), pp.94-108.
  38. Fontana, F.M.A. (2009). From single pixel to continental scale: using AVHRR and MODIS to study land surface parameters in mountain regions. Ph.D. dissertation, Institute of Geography, University of Bern, Switzerland. URL: <http://www.climatestudies.unibe.ch/students/theses/phd/31.pdf>. (Accessed on October 15, 2012).
  39. Gao, B-C. (1996). NDWI - A normalized difference water index for remote sensing of vegetation liquid water from space. *Remote Sensing of Environment*, Vol. 58(3), pp.257-266.
  40. Geerken, R., Zaitchik, B. and Evans, J.P. (2005). Classifying rangeland vegetation type and coverage from NDVI time series using Fourier Filtered Cycle Similarity. *International Journal of Remote Sensing*, Vol. 26(24), pp.5535-5554.
  41. Glantz, M.H. and Orlovsky, N.S. (1983). Desertification: A review of the concept. *Desertification Control Bulletin*, Vol. 9, p.4.
  42. Glenn, E.P., Huete, A.R., Nagler, P.L. and Nelson, S.G. (2008). Relationship between remotely-sensed vegetation indices, canopy attributes and plant physiological processes: What vegetation indices can and cannot tell us about the landscape. *Sensors*, Vol. 8, pp.2136-2160.
  43. Groeneveld, D.P. and Baugh, W.M. (2007). Correcting satellite data to detect vegetation signal for eco-hydrologic analyses. *Journal of Hydrology*, Vol. 344(1-2), pp.135-145.
  44. Hall, F.G., Strebel, D.E., Nickeson, J.E. and Goetz, S.J. (1991). Radiometric rectification: Toward a common radiometric response among multi-date, multi-sensor images. *Remote Sensing of Environment*, Vol. 35, pp.11-27.
  45. Hamel, S., Garel, M., Festa-Bianchet, M., Gaillard, J-M. and Côté, S.D. (2009). Spring Normalized Difference Vegetation Index (NDVI) predicts annual variation in timing of peak faecal crude protein in mountain ungulates. *Journal of Applied Ecology*, Vol. 46, pp.582-589.
  46. Holben, B. (1986). Characteristics of maximum-value composite images from temporal AVHRR data. *International Journal of Remote Sensing*, Vol. 7, pp.1417-1434.
  47. Huang, Q., Li, M., Chen, C., Mao, K., Chen, Z., Li, F. and Chen, D. (2010). Assessment of land degradation in Guizhou province, Southwest China using AVHRR/NDVI and MODIS/NDVI data. 18<sup>th</sup> International Conference on Geoinformatics, 18-20 June 2010, Beijing, pp.1-5. doi:10.1109/GEOINFORMATICS.2010.5568119.
  48. Huete, A.R. (1988). A soil adjusted vegetation index (SAVI). *Remote Sensing of Environment*, Vol. 25(3), pp.295-309.
  49. Huete, A.R. and Liu, H.Q. (1994). An error and sensitivity analysis of the atmospheric- and soil-correcting variants of the NDVI for the MODIS-EOS. *IEEE Transactions on Geoscience and Remote Sensing*, Vol. 32(4), pp.897-905.



50. Huete, A.R., Didan, K., Miura, T., Rodriguez, E.P., Gao, X. and Ferreira, L.G. (2002). Overview of the radiometric and biophysical performance of the MODIS vegetation indices. *Remote Sensing of Environment*, Vol. 83, pp.195-213.
51. Huete, A.R., Didan, K., Shimabukuro, Y.E., Ratana, P., Saleska, S.R., Hutyra, L.R., Yang, W., Nemani, R.R. and Myneni, R. (2006). Amazon rainforests green-up with sunlight in dry season. *Geophysical Research Letters*, Vol. 33(L06405), 4 p.
52. Huete, A.R., Liu, H.Q., Batchily, K. and Leeuwen, van W. (1997). A comparison of vegetation indices over a global set of TM images for EOS-MODIS. *Remote Sensing of Environment*, Vol. 59, pp.440-451.
53. Jackson, R.D. and Huete, A.R. (1991). Interpreting vegetation indices. *Preventive Veterinary Medicine*, Vol. 11, pp.185-200.
54. Jackson, R.D. and Pinter, P.J.Jr. (1986). Spectral response of architecturally different wheat canopies. *Remote Sensing of Environment*, Vol. 20(1), pp.43-56.
55. Jakubauskas, M.E., Legates, D.R. and Kastens, J.H. (2001). Harmonic analysis of time-series AVHRR NDVI data. *Photogrammetric Engineering & Remote Sensing*, Vol. 67(4), pp.461-470.
56. Jensen, J.R. (1996). *Introductory digital image processing: A remote sensing perspective*. 2<sup>nd</sup> Edition, Englewood Cliffs, New Jersey, Prentice-Hall, pp.72-108.
57. Jensen, J.R., Cowen, D., Narumalani, S. and Halls, J. (1997). Principles of change detection using digital remote sensor data. In *Integration of Geographic Information Systems and Remote Sensing*. Star, J.L., Estes, J.E. and McGwire, K.C (Eds.), Cambridge University Press, Cambridge, pp.37-54.
58. Jha, C.S. and Unni, N.V.M. (1994). Digital change detection of forest conversion of a dry tropical Indian forest region. *International Journal of Remote Sensing*, Vol. 15(13), pp.2543-2552.
59. Jianya, G., Haigang, S., Guorui, Ma. and Qiming, Z. (2008). A review of multi-temporal remote sensing data change detection algorithms. *The International Archives of the Photogrammetry, Remote Sensing and Spatial Information Sciences*, Vol. XXXVII. Part B7, pp.757-762. URL:[http://www.isprs.org/proceedings/XXXVII/congress/7\\_pdf/5\\_WG-VII-/05.pdf](http://www.isprs.org/proceedings/XXXVII/congress/7_pdf/5_WG-VII-/05.pdf). (Accessed on November 15, 2012).
60. Jury, M.R., Weeks, S. and Godwe, M.P. (1997). Satellite-observed vegetation as an indicator of climate variability over Southern Africa. *South African Journal of Science*, Vol. 93, pp.34-38.
61. Justice, C.O., Townshend, J.R.G., Holben, B.N. and Tucker, C.J. (1985). Analysis of the phenology of global vegetation using meteorological satellite data. *International Journal of Remote Sensing*, Vol. 6, pp.1271-1318.
62. Karaburun, A. (2010). Estimation of C factor for soil erosion modeling using NDVI in Büyükçekmece watershed. *Ozean Journal of Applied Sciences*, Vol. 3(1), pp.77-85.
63. Kawabata, A., Ichii K. and Yamaguchi, Y. (2001). Global monitoring of interannual changes in vegetation activities using NDVI and its relationships to temperature and precipitation. *International Journal of Remote Sensing*, Vol. 22(7), pp.1377-1382.
64. Kennedy, R.E., Townsend, P.A., Gross, J.E., Cohen, W.B., Bolstad, P., Wang, Y.Q. and Adams, P. (2009). Remote sensing change detection tools for natural resource managers: Understanding concepts and tradeoffs in the design of landscape monitoring projects. *Remote Sensing of Environment*, Vol. 113(7), pp.1382-1396.
65. Kertész, Á. (2009). The global problem of land degradation and desertification. *Hungarian Geographical Bulletin*, Vol. 58(1), pp.19-31.
66. Kogan, F.N. (1987). Vegetation index for areal analysis of crop conditions. *Proceedings of 18th Conference Agricultural and Forest Meteorology and 8<sup>th</sup> Conference Biometeorology and Aerobiology*, September 15-18, 1987, W. Lafayette, Indiana, AMS Publisher, pp.103-106.
67. Kogan, F.N. (1997). Global drought watch from space. *Bulletin of the American Meteorological Society*, Vol. 78(4), pp.621-636.
68. Le Houérou, H.N. (1996). Climate change, drought and desertification. *Journal of Arid Environments*, Vol. 34, pp.133-185.
69. Li, Z. and Guo, X. (2012). Detecting climate effects on vegetation in northern mixed prairie using NOAA AVHRR 1-km time-series NDVI data. *Remote Sensing*, Vol. 4, pp.120-134.
70. Lillesand, T.M. and Kiefer, R.W. (1994). *Remote Sensing and Image Interpretation*. 3<sup>rd</sup> Edition, John Wiley & Sons, Inc., New York, pp.203-210.
71. Lillesand, T.M. and Kiefer, R.W. (2000). *Remote sensing and image interpretation*. 4<sup>th</sup> Edition, John Wiley & Sons, Inc., New York, pp.124-156.
72. Lillesand, T.M., Kiefer, R.W. and Chipman, J.W. (2004). *Remote sensing and image interpretation*. 5<sup>th</sup> Edition, John Wiley & Sons, Inc., New York, pp.178-198.
73. Liu, H.Q. and Huete, A.R. (1995). A feedback based modification of the NDVI to minimize canopy background and atmospheric noise. *IEEE Transactions on Geoscience and Remote Sensing*, Vol. 33(2), pp.457-465.
74. Lloyd, D. (1990). A phenological classification of terrestrial vegetation cover using shortwave vegetation index imagery. *International Journal of Remote Sensing*, Vol. 11(12), pp.2269-2279.
75. Los, S.O. (1998). Estimation of the ratio of sensor degradation between NOAA-AVHRR channels 1 and

- 2 from monthly NDVI composites. *IEEE Transactions on Geoscience and Remote Sensing*, Vol. 36, pp.206-213.
76. Los, S.O., Collatz, G.J., Sellers, P.J., Malmström, C.M., Pollack, N.H., DeFries, R.S., Bounoua, L., Parris, M.T., Tucker, C.J. and Dazlich, D.A. (2000). A Global 9-yr biophysical land surface dataset from NOAA- AVHRR data. *Journal of Hydrometeorology*, Vol. 1, pp.183-199.
  77. Los, S.O., Justice, C.O. and Tucker, C.J. (1994). A global 1° by 1° NDVI data set for climate studies derived from the GIMMS continental NDVI data. *International Journal of Remote Sensing*, Vol. 15(17), pp.3493-3518.
  78. Los, S.O., North, P.R.J., Grey, W.M.F. and Barnsley, M.J. (2005). A method to convert AVHRR normalized difference vegetation index time series to a standard viewing and illumination geometry. *Remote Sensing of Environment*, Vol. 99(4), pp.400-411.
  79. Lu, D., Mausel, P., Brondízio, E. and Moran, E. (2004). Change detection techniques. *International Journal of Remote Sensing*, Vol. 25(12), pp.2365-2407.
  80. Lunetta, R.S., Knight, J.F., Ediriwickrema, J., Lyon, J.G. and Worthy, L.D. (2006). Land-cover change detection using multi-temporal MODIS NDVI data. *Remote Sensing of Environment*, Vol. 105, pp.142-154.
  81. Lyon, J.G., Yuan, D., Lunetta, R.S. and Elvidge, C.D. (1998). A change detection experiment using vegetation indices. *Photogrammetric Engineering & Remote Sensing*, Vol. 64(2), pp.143-150.
  82. Macleod, R.D. and Congalton, R.G. (1998). A quantitative comparison of change-detection algorithms for monitoring eelgrass from remotely sensed data. *Photogrammetric Engineering & Remote Sensing*, Vol. 64(3), pp.207-216.
  83. Mambo, J. and Archer, E. (2007). An assessment of land degradation in the Save catchment of Zimbabwe. *Area*, Vol. 39(3), pp.380-391.
  84. Mas, J-F. (1999). Monitoring land-cover changes: a comparison of change detection techniques. *International Journal of Remote Sensing*, Vol. 20(1), pp.139-152.
  85. Meneses-Tovar, C.L. (2011). NDVI as indicator of degradation. *Unasylva*, Vol. 62(238), pp.39-46.
  86. Moran, M.S., Jackson, R.D., Slater, P.N. and Teillet, P.M. (1992). Evaluation of simplified procedures for retrieval of land surface reflectance factors from satellite sensor output. *Remote Sensing of Environment*, Vol. 41, pp.169-184.
  87. Mouat, D.A., Mahin, G.C. and Lancaster, J. (1993). Remote sensing techniques in the analysis of change detection. *Geocarto International*, Vol. 2, pp.39-50.
  88. Mout, D., Lancaster, J., Wade, T., Wickham, J., Fox, C., Kepner, W. and Ball, T. (1997). Desertification evaluated using an integrated environmental assessment model. *Environmental Monitoring and Assessment*, Vol. 54, pp.209-222.
  89. Myneni, R., Keeling, C.D., Tucker, C.J., Asrar, G. and Nemani, R.R. (1997). Increased plant growth in northern high latitudes from 1981-1991. *Nature*, Vol. 386, pp.698-702.
  90. Myneni, R.B. and Asrar, G. (1994). Atmospheric effects and spectral vegetation indices. *Remote Sensing of Environment*, Vol. 47, pp.390-402.
  91. Myneni, R.B., Asrar, G., Tanré, D. and Choudhury, B.J. (1992). Remote sensing of solar radiation absorbed and reflected by vegetated land surfaces. *IEEE Transactions on Geoscience and Remote Sensing*, Vol. 30(2), pp.302-314.
  92. Nelson, R. and Holben, B. (1986). Identifying deforestation in Brazil using multiresolution satellite data. *International Journal of Remote Sensing*, Vol. 7(3), pp.429-448.
  93. Nicandrou, A. (2010). Hydrological assessment and modelling of the river Fani catchment, Albania. Faculty of Advanced Technology, University of Glamorgan. URL:<http://dspace1.isd.glam.ac.uk/dspace/handle/10265/461> (Accessed on November 11, 2012).
  94. Nicholson, S.E. and Farrar, T. (1994). The influence of soil type on the relationships between NDVI, rainfall and soil moisture in semi-arid Botswana: Part I. NDVI response to rainfall. *Remote Sensing of Environment*, Vol. 50, pp.107-120.
  95. Nicholson, S.E., Tucker, C.J. and Ba, M.B. (1998). Desertification, drought, and surface vegetation: An example from the West African Sahel. *Bulletin of the American Meteorological Society*, Vol. 79, pp.1-15.
  96. Odingo, R.S. (1990). The definition of desertification: its programmatic consequences for UNEP and the international community. *Desertification Control Bulletin*, Vol. 18, pp.31-50.
  97. Patra, S., Ghosh, S. and Ghosh, A. (2007). Unsupervised change detection in remote-sensing images using modified self-organizing feature map neural network. *Proceedings of the International Conference on Computing: Theory and Applications*, 5-7 March 2007, Kolkata, pp.716-720. doi: 10.1109/ICCTA.2007.128.
  98. Pettorelli, N., Vik, J.O., Mysterud, A., Gaillard, J.M., Tucker, C.J. and Stenseth, N.C. (2005). Using the satellite-derived NDVI to assess ecological responses to environmental change. *Trends in Ecology & Evolution*, Vol. 20(9), pp.503-510.
  99. Pilon, P.G., Howarth, P.J. and Bullock, R.A. (1988). An enhanced classification approach to change detection in semi- arid environments. *Photogrammetric Engineering & Remote Sensing*, Vol. 54(12), pp.1709-1716.
  100. Prenzel, B. and Treitz, P. (2004). Remote sensing change detection for a watershed in north Sulawesi,

- Indonesia. *Progress in Planning*, Vol. 61, pp.349-363.
101. Prince, S.D. (1991). Satellite remote sensing of primary production: Comparison of results for Sahelian grasslands 1981-1988. *International Journal of Remote Sensing*, Vol. 12, pp.1301-1311.
  102. Prince, S.D. and Tucker, C.J. (1986). Satellite remote sensing of rangelands in Botswana: II. NOAA AVHRR and herbaceous vegetation. *International Journal of Remote Sensing*, Vol. 7, pp.1555-1570.
  103. Propastin, P. and Kappas, M. (2008). Spatiotemporal drifts in AVHRR/NDVI-precipitation relationship and their linkage to land use change in central Kazakhstan. *EARSEL eProceedings*, Vol. 7(1), pp.30-45.
  104. Quarmby, N.A., Milnes, M., Hindle, T.L. and Silleos, N. (1993). The use of multi-temporal NDVI measurements from AVHRR data for crop yield estimation and prediction. *International Journal of Remote Sensing*, Vol. 14, pp.199-210.
  105. Rahman, Md.R., Islam, A.H.M.H. and Rahman, Md.A. (2004). NDVI derived sugarcane area identification and crop condition assessment. *Planplus*, Vol. 1(2), pp.1-12.
  106. Ramachandra, T.V. and Kumar, U. (2004). Geographic resources decision support system for land use, land cover dynamics analysis. *Proceedings of the FOSS/GRASS Users Conference*, 12-14 September 2004, Bangkok, Thailand.-URL:<http://wgbis.ces.iisc.ernet.in/energy/paper/grds/viewpaper.pdf>. (Accessed on November 15, 2012).
  107. Rouse, J.W., Haas, R.H., Schell, J.A. and Deering, D.W. (1973). Monitoring vegetation systems in the Great Plains with ERTS. *Third ERTS Symposium*, NASA SP-351 I, pp.309-317.
  108. Ruecker, G.R., Shi, Z., Mueller, M., Conrad, C., Ibragimov, N., Lamers, J.P.A., Martius, C., Strunz, G. and Dech, S.W. (2007). Cotton yield estimation in Uzbekistan integrating MODIS, Landsat ETM+ and field data. URL:[http://www.isprs.org/proceedings/XXXVI/8-W48/123\\_XXXVI-8-W48.pdf](http://www.isprs.org/proceedings/XXXVI/8-W48/123_XXXVI-8-W48.pdf). pp.123-128. (Accessed on January 20, 2013).
  109. Sader, S.A. and Winne, J.C. (1992). RGB-NDVI colour composites for visualizing forest change dynamics. *International Journal of Remote Sensing*, Vol. 13(16), pp.3055-3067.
  110. Sader, S.A., Bertrand, M. and Wilson, E.H. (2003). Satellite change detection of forest harvest patterns on an industrial forest landscape. *Forest Science*, Vol. 49(3), pp.341-353.
  111. Sader, S.A., Hayes, D.J., Hepinstall, J.A., Coan, M. and Soza, C. (2001). Forest change monitoring of a remote biosphere reserve. *International Journal of Remote Sensing*, Vol. 22(10), pp.1937-1950.
  112. Saito, G., Mino, N., Li, Y.Q. and Yasuda, Y. (2002). Seasonal changes of vegetation index obtained from NOAA/AVHRR data in China and Japan. In: Uchida, S., Youqi, C. and Saito, G. (Eds.), *Application on remote sensing technology for the management of agricultural resources*, Beijing' China Agricultural Sciencetech Press, pp.107-114.
  113. Sakamoto, T., Yokozawa, M., Toritani, H., Shibayama, M., Ishitsuka, N. and Ohno, H. (2005). A crop phenology detection method using time-series MODIS data. *Remote Sensing of Environment*, Vol. 96, pp.366-374.
  114. Sellers, P.J. (1985). Canopy reflectance, photosynthesis and transpiration. *International Journal of Remote Sensing*, Vol. 6(8), pp.1335-1372.
  115. Sellers, P.J., Los, S.O., Tucker, C.J., Justice, C.O., Dazlich, D.A., Collatz, G.J. and Randall, D.A. (1996). A revised land surface parameterization (SiB-2) for atmospheric GCMs. Part 2: The generation of global fields of terrestrial biophysical parameters from satellite data. *Journal of Climate*, Vol. 9(4), pp.706-737.
  116. Serpico, S.B. and Bruzzone, L. (1999). Change detection. In *information processing for remote sensing*. Chen, C.H. (Ed.), World Scientific Publishing, Singapore, pp.319-336.
  117. Sesnie, S.E., Gessler, P.E., Finegan, B. and Thessler, S. (2008). Integrating Landsat TM and SRTM-DEM derived variables with decision trees for habitat classification and change detection in complex neotropical environments. *Remote Sensing of Environment*, Vol. 112, pp.2145-2159.
  118. Shaoqing, Z. and Lu, X. (2008). The comparative study of three methods of remote sensing image change detection. *The International Archives of the Photogrammetry, Remote Sensing and Spatial Information Sciences*. Vol. XXXVII. Part B7. Beijing 2008, pp.1595-1598. URL:[http://www.isprs.org/proceedings/XXXVII/congress/7\\_pdf/10\\_ThS-18/12.pdf](http://www.isprs.org/proceedings/XXXVII/congress/7_pdf/10_ThS-18/12.pdf). (Accessed on January 26, 2013).
  119. Singh, A. (1986). Change detection in the tropical forest environment of northeastern India using Landsat remote sensing and tropical land management: *Remote Sensing and Tropical Land Management*. Eden, M.J. and Perry, J.T. (Eds.), John Wiley & Sons, Inc., New York, pp.237-254.
  120. Singh, A. (1989). Digital change detection techniques using remotely-sensed data. *International Journal of Remote Sensing*, Vol. 10(6), pp.989-1003.
  121. Singh, R.P., Roy, S. and Kogan, F. (2003). Vegetation and temperature condition indices from NOAA AVHRR data for drought monitoring over India. *International Journal of Remote Sensing*, Vol. 24(22), pp.4393-4402.
  122. Stiles, D. (1995). Social aspects of sustainable dryland management. *John Wiley & Sons*, Chichester, pp.19-64.

123. Tappan, G.G., Tyler, D.J., Wehde, M.E. and Moore, D.G. (1992). Monitoring rangeland dynamics in Senegal with advanced very high resolution radiometer data. *Geocarto International*, Vol. 7, pp.87-98.
124. Tarpley, J.D., Schnieder, S.R. and Money, R.L. (1984). Global vegetation indices from NOAA-7 meteorological satellite. *Journal of Climate and Applied Meteorology*, Vol. 23, pp.4491-4503.
125. Thiam, A.K. (2003). The causes and spatial pattern of land degradation risk in southern Mauritania using multitemporal AVHRR-NDVI imagery and field data. *Land Degradation & Development*, Vol. 14(1), pp.133-142.
126. Thomas, D.S.G. (1997). Science and the desertification debate. *Journal of Arid Environments*, Vol. 37(4), pp.599-608.
127. Townshend, J., Justice, C., Li, W., Gurney, C. and McManus, J. (1991). Global land cover classification by remote sensing: present capabilities and future possibilities. *Remote Sensing of Environment*, Vol. 35(2-3), pp.243-255.
128. Townshend, J.R.G. (1992). Improved global data for land applications: A proposal for a new high resolution data set. Report No. 20. International Geosphere Biosphere Program, Stockholm, Sweden.- URL:<http://library.wur.nl/WebQuery/clc/916308>. (Accessed on June 04, 2012).
129. Tucker, C.J. (1979). Red and photographic infrared linear combinations monitoring vegetation. *Remote Sensing of Environment*, Vol. 8, pp.127-150.
130. Tucker, C.J. and Sellers, P.J. (1986). Satellite remote sensing of primary production. *International Journal of Remote Sensing*, Vol. 7, pp.1395-1416.
131. Tucker, C.J., Gatlin, J., Schnieder, S.R. and Kuchinos, M.A. (1982). Monitoring large scale vegetation dynamics in the Nile delta and river valley from NOAA AVHRR data. *Proceedings of the Conference on Remote Sensing of Arid and Semi-Arid Lands*, Cairo, Egypt, Ann Arbor, MI. pp.973-977.
132. Tucker, C.J., Slayback, D.A., Pinzon, J.E., Los, S.O., Myneni, R.B. and Taylor, M.G. (2001). Higher northern latitude normalized difference vegetation index and growing season trends from 1982 to 1999. *International Journal of Biometeorology*, Vol. 45(4), pp.184-190.
133. UNEP (1992). *World Atlas of desertification*. London, UNEP and Edward Arnold, London, p.69.
134. USGS (2008). *Earth Resources Observation and Science Center*. URL:<http://glovis.usgs.gov/> (Accessed on December 04, 2008).
135. USGS (2010). *What is NDVI?* United States Geological Survey: Science for Changing World. URL:<http://ivm.cr.usgs.gov/>(Accessed on September 10, 2011).
136. Verhoef, W., Meneti, M. and Azzali, S. (1996). A colour composite of NOAA-AVHRR NDVI based on time series analysis (1981-1992). *International Journal of Remote Sensing*, Vol. 17(2), pp.231-235.
137. Vermote, E.F. and Vermeulen, A. (1999). Atmospheric correction algorithm: Spectral reflectances (MOD09) algorithm technical background document. URL:[http://modis.gsfc.nasa.gov/data/atbd/atbd\\_mod08.pdf](http://modis.gsfc.nasa.gov/data/atbd/atbd_mod08.pdf). (Accessed on November 18, 2012).
138. Vermote, E.F., El-Saleous, N.Z. and Justice, C.O. (2002). Atmospheric correction of MODIS data in the visible to middle infrared: First results. *Remote Sensing of Environment*, Vol. 83, pp.97-111.
139. Wang, J., Rich, P.M. and Price, K.P. (2003). Temporal responses of NDVI to precipitation and temperature in the central Great Plains, USA. *International Journal of Remote Sensing*, Vol. 24, pp.2345-2364.
140. Warren, A. and Agnew, C. (1988). An assessment of desertification and land degradation in arid and semi-arid areas. *International Institute for Environment and Development*, London, pp.5-23.
141. Weismiller, R.A., Kristof, S.J., Scholz, D.K., Anuta, P.E. and Momin, S.A. (1977). Change detection in coastal zone environments. *Photogrammetric Engineering & Remote Sensing*, Vol. 43, pp.1533-1539.
142. Wen, X. and Yang, X. (2009). Change detection from remote sensing imageries using spectral change vector analysis. *Asia-Pacific Conference on Information Processing*, 18-19 July 2009, Shenzhen, pp.189-192. doi: 10.1109/APCIP.2009.183.
143. Wessels, K.J., Prince, S.D., Frost, P.E. and Zyl, van D. (2004). Assessing the effects of human-induced land degradation in the former homelands of northern South Africa with a 1 km AVHRR NDVI time-series. *Remote Sensing of Environment*, Vol. 91, pp.47-67.
144. Xiao, J. and Moody, A. (2004). Trends in vegetation activity and their climatic correlates: China 1982 to 1998. *International Journal of Remote Sensing*, Vol. 25(24), pp.5669-5689.
145. Xiao, J. and Moody, A. (2005). Geographical distribution of global greening trends and their climatic correlates: 1982-1998. *International Journal of Remote Sensing*, Vol. 26(11), pp.2371-2390.
146. Xiao, X., Boles, S., Frolking, S., Salas, W., Moore III, B., Li, C., He, L. and Zhao, R. (2002). Observation of flooding and rice transplanting of paddy rice field at the site to landscape scales in China using VEGETATION sensor data. *International Journal of Remote Sensing*, Vol. 23(15), pp.3009-3022.
147. Yan, S. and Xiao-xia, J. (2010). Remote sensing change detection based on growing hierarchical self-organization map. *2<sup>nd</sup> International Conference on Environmental Science and Information Application Technology*, 17-18 July 2010, Wuhan, pp.60-63. doi: 10.1109/ESIAT.2010.5567278.



148. Young, A. (1998). Assessment of land degradation by remote sensing in Land Resources: Now and for the Future. Cambridge University Press, Cambridge. URL:<http://www.uea.ac.uk/env/landresources/news-degradation-rs.html>. (Accessed on January 20, 2013).
149. Yuan, D., Elvidge, C.D. and Lunetta, R.S. (1998). Survey of multispectral methods for land cover change analysis. In remote sensing change detection: Environmental monitoring methods and applications. Lunetta, R.S. and Elvidge, C.D. (Eds.), Ann Arbor Press, Chelsea, Michigan, pp.21-39.
150. Zaeen, A.A. (2012). Remote sensing technique to monitoring the risk of soil degradation using NDVI. International Journal of Geographical Information System Applications and Remote Sensing, Vol. 3(1), pp.1-8.
151. Zoran, M. and Stefan, S. (2006). Climatic changes effects on spectral vegetation indices for forested areas analysis from satellite data. Proceedings of the 2<sup>nd</sup> Environmental Physics Conference, 18-22 February 2006, Alexandria, Egypt, pp.73-83.

