



GLOBAL JOURNAL OF RESEARCHES IN ENGINEERING: E
CIVIL AND STRUCTURAL ENGINEERING
Volume 14 Issue 2 Version 1.0 Year 2014
Type: Double Blind Peer Reviewed International Research Journal
Publisher: Global Journals Inc. (USA)
Online ISSN: 2249-4596 & Print ISSN: 0975-5861

Relationship between Porosity, the Maximum Dry Density and the Mechanical Behavior of Stabilized Dune Sands

By Abderrahmane Ghrieb, Ratiba Mitiche-Kettab & Salim Guettala

University of Djelfa, Algeria

Abstract- In this paper, the stabilization of studied dune sands was made by compaction and addition of stabilization agents; cement and filled sand. The cement percentage ranges from 2 to 10% with a step of 2%, and that of the filled sand from 0 to 30% with a step of 10%, sixty mixtures have been prepared. For each mixture, the optimal normal Proctor, the porosity accessible to water, the compressive strength, the splitting tensile strength and the elasticity modulus were investigated. The data so developed were statistically analyzed in order to examine the influence of the dune sand origin and the proportioning of stabilization agent on the porosity, and establish the links between porosity, the maximum dry density and the mechanical behavior (MB) of stabilized dune sands. Through the results obtained, relationships between porosity, the maximum dry density and the mechanical behavior were performed in an acceptable manner, irrespective of the dune sand origin and the stabilization agent content.

Keywords: *dune sands; stabilization; relationship; porosity accessible to water; maximum dry density; mechanical behavior.*

GJRE-E Classification : *FOR Code: 090599*



Strictly as per the compliance and regulations of :



© 2014. Abderrahmane Ghrieb, Ratiba Mitiche-Kettab & Salim Guettala. This is a research/review paper, distributed under the terms of the Creative Commons Attribution-Noncommercial 3.0 Unported License (<http://creativecommons.org/licenses/by-nc/3.0/>), permitting all non commercial use, distribution, and reproduction in any medium, provided the original work is properly cited.

Relationship between Porosity, the Maximum Dry Density and the Mechanical Behavior of Stabilized Dune Sands

Abderrahmane Ghrieb ^α, Ratiba Mitiche-Kettab ^σ & Salim Guettala ^ρ

Abstract- In this paper, the stabilization of studied dune sands was made by compaction and addition of stabilization agents; cement and filled sand. The cement percentage ranges from 2 to 10% with a step of 2%, and that of the filled sand from 0 to 30% with a step of 10%, sixty mixtures have been prepared. For each mixture, the optimal normal Proctor, the porosity accessible to water, the compressive strength, the splitting tensile strength and the elasticity modulus were investigated. The data so developed were statistically analyzed in order to examine the influence of the dune sand origin and the proportioning of stabilization agent on the porosity, and establish the links between porosity, the maximum dry density and the mechanical behavior (MB) of stabilized dune sands. Through the results obtained, relationships between porosity, the maximum dry density and the mechanical behavior were performed in an acceptable manner, irrespective of the dune sand origin and the stabilization agent content.

Keywords: dune sands; stabilization; relationship; porosity accessible to water; maximum dry density; mechanical behavior.

I. INTRODUCTION

This is the second paper in a series reporting on the results an investigation into the physical and mechanical properties of stabilized dune sands of the Djelfa region (Algeria). The first paper [1, 2] reported on the utilization of stabilized dune sand in road foundation layers. The aim of the work presented in the first paper is the valorization of dune sand, which is abundant in Djelfa. This study consists of valorizing a local material in road construction. The results obtained show that the formulations selected have sufficient performances to be used in road foundation layers. The studied dune sands of the region of Djelfa belong to the D1 class according to the classification of the technical guideline on embankment and capping layer construction (GTR). They are poorly graded and contain a high proportion of fine elements (high porosity); their stabilization requires the addition of a granular corrector. The maximum dry density increased with cement

addition, owing to the higher absolute density of the cement. However, the optimal water content decreases. The increase in the maximum dry density with sand FS addition is attributed to the increase in the compactness of the mixtures. The addition of sand FS takes part in a very positive way to correct the grading of the studied sands, by improvement of the compactness of the mixtures and consequently the mechanical performance, particularly the compressive and tensile strength. The effect of the origin of sand on the physical characteristics and mechanical is very significant. This is attributable to the relative distinction of grading for each of sand. The use of sand FS improves the mechanical performances tested (tensile and compressive strength and elasticity modulus). They develop satisfactory mechanical performances to consider their valorization in road foundation layers. This second paper investigates the relationship between porosity accessible to water, the maximum dry density and the mechanical behaviour (MB) and presents empirical models that have been developed to describe this relationship. Stabilized dune sand is a porous material. In other words, it contains pores or voids. These pores are crucial to affect the mechanical behavior and durability of cement-based materials [3]. Indeed, a low porosity is the best defence against any aggressive agents. Porosity is a natural consequence of the quantity of water added more than is necessary to cement hydration, and of the voids present in the aggregate [4,5]. The inconvenience of this porosity is marked at two levels: on the strength and durability of cement-based materials. The compressive strength, the splitting tensile strength and elasticity modulus of cement-based materials are important design parameters in civil engineering. The splitting tensile test has been reported as indirect measure of the tensile strength of cement-based materials [6,7]. It has been used widely in practice due to its testing ease, simplicity of specimen preparation, and possible field applications, particularly in road engineering. In our study, the stabilization of studied sands (three dune sands of the Djelfa region) is made by compaction and the addition of a cement and a granular corrector; the cement percentage ranges from 2 to 10% with a step of 2%, and that of the granular corrector from 0 to 30% with

Author α : Civil Engineering Department, University of Djelfa, 17000 Djelfa, Algeria. e-mail: ghrieb75@gmail.com

Author σ : Laboratory of Construction and Environment, Polytechnic National School of Algiers, 16000 Algiers, Algeria. e-mail: Mitiche_rdz@yahoo.fr

Author ρ : Civil Engineering Research Laboratory, University of Biskra, 07000 Biskra, Algeria. e-mail: guettalasalim@yahoo.com

a step of 10%, Sixty mixtures have been prepared. For each mixture, the optimal normal Proctor, the porosity accessible to water, the compressive strength, the splitting tensile strength and elasticity modulus were determined. The main objective of this paper was to study the effects of the addition of stabilization agents on the porosity accessible to water and its relationship with the maximum dry density and the mechanical behavior (compressive strength, the splitting tensile strength and elasticity modulus).

II. EXPERIMENTAL PROGRAM

a) Materials

i. Cement

The cement used is of composite cement (CEM II/A) class 42.5 MPa with 20% to limestone fillers. The clinker is from the cement factory of M'sila. Specific density = 3.06 g/cm³ and fineness = 3.918 cm²/g. The mineralogical composition of clinker is presented in Table 1. The potential mineralogical composition of the clinker is calculated according to the empirical formula of Bogue [8].

Table 1 : Mineralogical composition of clinker (%)

C ₃ S	C ₂ S	C ₃ A	C ₄ AF
81.18	2.79	6.85	9.18

ii. Filled Sand (FS)

This sand comes from the centre of crushing Ben Labiad (municipality of Zakkar) located at approximately 40 Km in the south-east of the Djelfa centre (Fig. 1). The addition of this sand consists to improve the grading of studied sands (porosity about 45%) in order to reduce these voids. This increase in the compactness permits to develop better mechanical performances [1,2]. The filled sand, is of calcareous nature consisting mainly of calcite (95.23%), specific density = 2.64 g/cm³. The grading curve of sand is given in Fig. 2. The chemical analysis shows that this sand contains almost no harmful elements (0.23% of chlorides and 0.01% of sulphates).

iii. Studied Sands

Fig. 1 shows the locations of the studied sands. This work has been undertaken on three types of dune

sand in the Djelfa region (Algeria); sand of El-Masrane (SM) (municipality of Hassi Bahbah located about 35 Km north of the Djelfa centre), sand of Zaafrane (SZ) (municipality of Zaafrane located about 57 Km northwest of the Djelfa centre) and sand of El-Amra (SA) (municipality of Ain El-Ibil located approximately 40 Km southwest of the Djelfa centre).

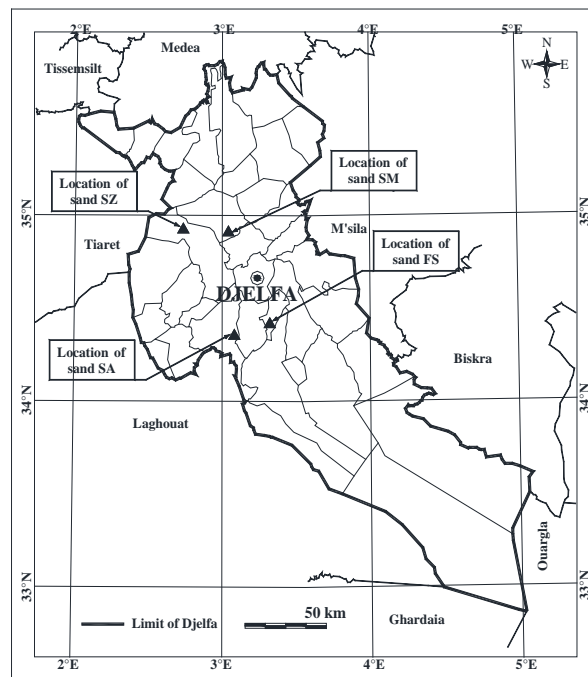


Figure 1 : Vicinity map showing locations of studied sands [1]

The different results of the physical characteristics of the studied sands are summarized in Table 2. Fig. 3 shows the grading curves of the studied sands. It can clearly be seen that 90% of the elements are lower than 0.5 mm. These sands can be classified from a granular viewpoint as fine sands [9]. The grading is very tight; nearly 90% of the grains have a dimension ranging between 0.1 mm and 0.5 mm. the sand alone could not have a sufficiently large compactness, and thus non adequate mechanical performances (compressive and the splitting tensile strength). It should be noted that the considered sands, need therefore to be granularly corrected.

Table 2 : Physical characteristics of the studied sands

Physical characteristics	Sands		
	SM	SZ	SA
Apparent density (g/cm ³)	1.40	1.44	1.42
Specific density (g/cm ³)	2.58	2.56	2.60
Porosity (%)	46.00	44.00	45.00
Compactness (%)	54.00	56.00	55.00

Visual sand equivalent (%)	74.00	53.00	57.00
Sand equivalent with the piston (%)	71.00	44.00	52.00
Blue value (for 100 g)	0.09	0.07	0.06
Fineness modulus	1.47	0.88	1.28

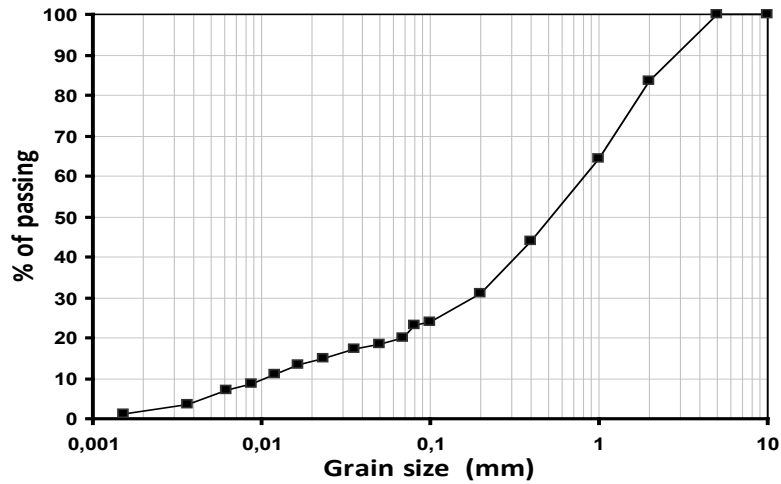


Figure 2 : Grading curve of sand (FS)

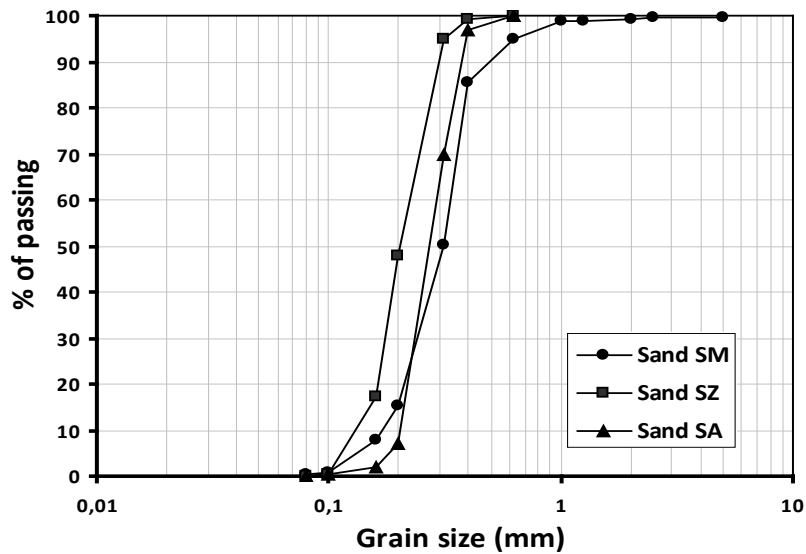


Figure 3 : Grading curves of the studied sands (SM, SZ, SA)

The chemical composition (Table 3) shows that the studied sands are principally made up of silica. The contents of the essential harmful substances (sulphates and chlorides) lie within the tolerable limits recommended by standard NF P 18-011 (this standard gives the definition and classification of chemically

aggressive environments). This allows us to use a Portland cement as a binder or as an agent of stabilization. The choice of a cement of class CEM I (ordinary Portland cement) or CEM II (composite cement) is very suitable [1].

Table 3 : Proportions of essential elements containing in the studied sands.

Chemical composition (%)	Sands		
	SM	SZ	SA
Silica	97.63	97.43	97.14

Sulfates	Traces	Traces	Traces
Chlorides	0.85	0.82	0.78
Organic matter	1.17	0.93	0.76

b) Tests Conducted

i. Proctor Compaction Test

The mixtures are compacted by using normal Proctor energy according to ASTM D1557-09 Standard [10]. The test was carried out just after mixing operation and therefore could not take into account the effect of the hydration of cement. The values obtained of the optimal normal Proctor (maximum dry density and optimal water content) are required for the preparation of specimens that will be tested in this study (the specimens are made up at the optimal normal Proctor).

ii. Mechanical strengths and elasticity modulus test

The compression strength test was carried out according to EN 13286-41 standard [11]. Three specimens were tested at 28 days for each mix proportions. The splitting tensile test was run at 90 days according to EN 13286-42 standard [12]. Similar to the compressive test, the splitting tensile test was carried out on triplicate specimens and average the splitting tensile strength values were obtained. The elasticity modulus test was effectuated according to ASTM C469 standard [13]. The specimens were removed from their conservation and tested in simple compression on a universal press with a capacity of 300 KN. It is equipped with a force sensor and a displacement sensor connected to a data acquisition program (Fig. 4). The force sensor is connected to the upper cross member of the press. The velocity of displacement of the plate was fixed at 0.2 mm/min. This test was conducted in laboratory of the building materials - University of Djelfa.

The precision of the force sensor is 0.01 KN, and that of the displacement sensor is 0.002 mm. The elasticity modulus is determined in the linear elastic range of the material and in the relative value of the axial strain versus axial deformation.

iii. Water Porosimetry Test

The most method used for characterization is undoubtedly the measurement of porosity accessible to water. It provides a total result (total porosity), indicator of the material quality. From the volume of the specimen, we can calculate its porosity representing the ratio of the pore volume to its total volume [3]. On an experimental basis, either by hydrostatic weighing of a saturated specimen, it then determines the total volume of the specimen (fraction porous and solid) and calculates its porosity, P (%) from the following relation:

$$(P \%) = ((M_{SSD} - M_D) / (M_{SSD} - M_{HYD})) \times 100\%$$

Where:

P: porosity determined experimentally by hydrostatic weighing, excluding the volume of trapped air and/or trapped (%);

M_{SSD} : mass of saturated surface dry specimen, weighing air (g);

M_D : dry mass of specimen (g);

M_{HYD} : hydrostatic mass of saturated surface dry specimen, weighing in water (g).

This method has been used to measure the porosity of the cement-based materials successfully [14-17]. The water porosimetry is determined by method of hydrostatic weighing (Fig. 5) which is based on the Archimedes' principle on a sample saturated and submerged in a wetting fluid (water). The procedure for evolution the porosity is as follows: The specimens are dried in an oven at 105 °C until constant mass (M_D). Then, the specimens are saturated by imbibitions in a cell during 24 h by complete immersion. Then a hydrostatic weighing of the saturated specimens immersed in water (M_{HYD}) and a weighing in air of the saturated specimens wiped with a wet rag (M_{SSD}). The method used in this test is that established by ASTM designation C 624 [3]. This test was conducted in laboratory of the building materials - University of Djelfa.



Figure 4 : Universal testing machine used

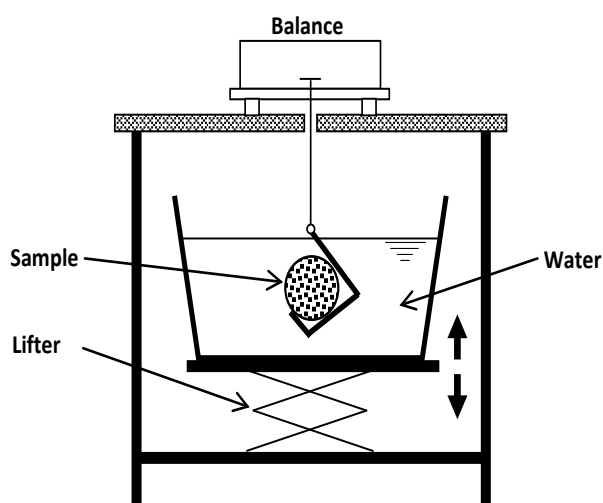


Figure 5 : Measurement of hydrostatic weighing

c) *Mix proportions and specimens preparation*

The stabilization of studied dune sands was made by:

- Mechanical stabilization: reduction of voids by the compaction operation.
- Physical stabilization: correction of the grading of studied sands by addition of a granular corrector (sand FS).

- Chemical stabilization: obtaining mechanical strength by addition of a hydraulic binder (cement).

The cement percentage ranges from 2 to 10% with a step of 2%, and that of the filled sand from 0 to 30% with a step of 10% (the percentages based on the weight of dry mixture). Sixty (60) mixtures are to be studied in this investigation. The mixtures are denoted by SX-PS-PC-PFS; where X represents the sand source, PS the sand percentage, PC the cement percentage, and PFS the percentage of filled sand, respectively. Details of the mixtures proportions are given in Table 4. For each mixture, the optimal normal Proctor (ONP), the porosity accessible to water, the compressive strength, the splitting tensile strength and elasticity modulus were determined. The specimen's preparation was made by static compression according to EN 13286-53 standard [18], this operation allows obtaining ends of the specimens perfectly perpendicular with the cylinder axis (not taking into account the effect of the ends on compressive strength). The moulds used allow obtaining a cylindrical specimen of 80 mm in diameter and 80 mm in height. The specimens were preserved in tight bags with a temperature of 20 ± 2 °C until the time of test.

Table 4 : Mixtures proportions

Mixtures			% of dune sand	% of cement	% of sand FS
SM series	SZ series	SA series			
SM 98-02-00	SZ 98-02-00	SA 98-02-00	98	2	
SM 96-04-00	SZ 96-04-00	SA 96-04-00	96	4	
SM 94-06-00	SZ 94-06-00	SA 94-06-00	94	6	0
SM 92-08-00	SZ 92-08-00	SA 92-08-00	92	8	
SM 90-10-00	SZ 90-10-00	SA 90-10-00	90	10	
SM 88-02-10	SZ 88-02-10	SA 88-02-10	88	2	
SM 86-04-10	SZ 86-04-10	SA 86-04-10	86	4	
SM 84-06-10	SZ 84-06-10	SA 84-06-10	84	6	10
SM 82-08-10	SZ 82-08-10	SA 82-08-10	82	8	
SM 80-10-10	SZ 80-10-10	SA 80-10-10	80	10	
SM 78-02-20	SZ 78-02-20	SA 78-02-20	78	2	
SM 76-04-20	SZ 76-04-20	SA 76-04-20	76	4	
SM 74-06-20	SZ 74-06-20	SA 74-06-20	74	6	20
SM 72-08-20	SZ 72-08-20	SA 72-08-20	72	8	
SM 70-10-20	SZ 70-10-20	SA 70-10-20	70	10	
SM 68-02-30	SZ 68-02-30	SA 68-02-30	68	2	
SM 66-04-30	SZ 66-04-30	SA 66-04-30	66	4	
SM 64-06-30	SZ 64-06-30	SA 64-06-30	64	6	30
SM 62-08-30	SZ 62-08-30	SA 62-08-30	62	8	
SM 60-10-30	SZ 60-10-30	SA 60-10-30	60	10	

III. TEST RESULTS AND DISCUSSION

a) Evolution of the porosity accessible to water

The results shown in Fig. 6 proves that for a constant sand FS proportioning, the increase in the quantity of cement added to the mixture, influences negatively and in a very significant way the porosity. This indicates that the addition of cement participates in the improvement of the mixtures compactness. The same remark can be made concerning the influence of sand FS proportioning on the porosity; which explains the effectiveness of the granular corrector used to improve the mixtures compactness (Fig. 7). The added cement

in the presence of water tends to lubricate the sand particles thereby resulting in a denser packing during the compaction process; which explains the decrease of the porosity. Moreover, the cement and the FS particles tend to occupy, the voids between the dune sands particles, hence, resulting in a denser sand matrix [1,19] (the cement and the sand FS participate in improving the mixtures compactness). For 2% cement and 0% sand FS, the porosity varied from 26.87%, 26% and 26.22% respectively for the sands SM, SZ and SA, and increased with the cement and the sand FS content to a maximum value of about 16.78%, 17.70% and 18.31% respectively for 10% cement and 30% sand FS addition.

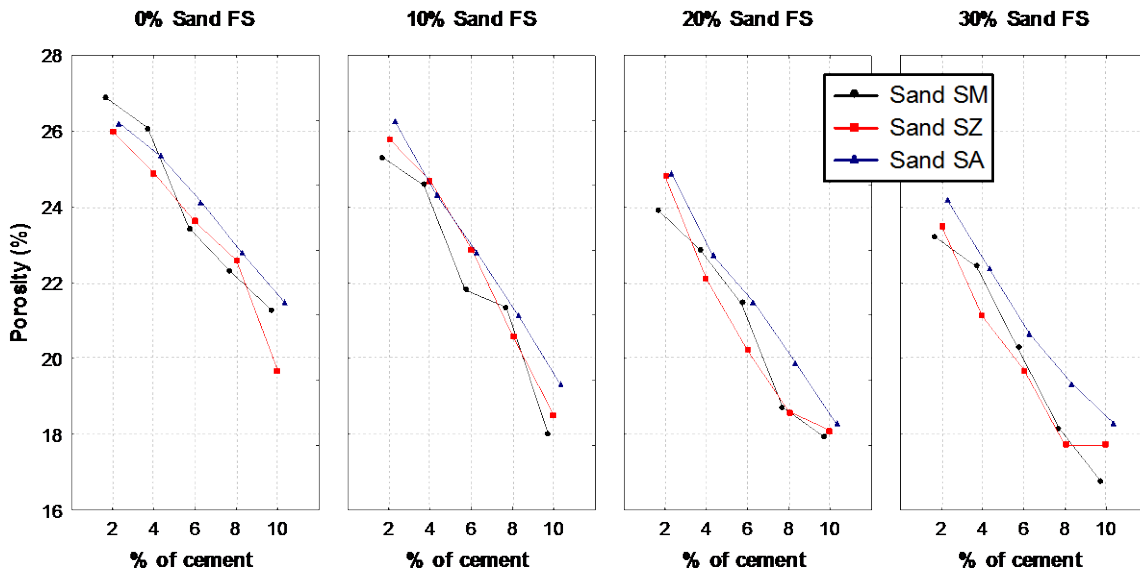


Figure 6 : Evolution of porosity as a function of the cement percentage

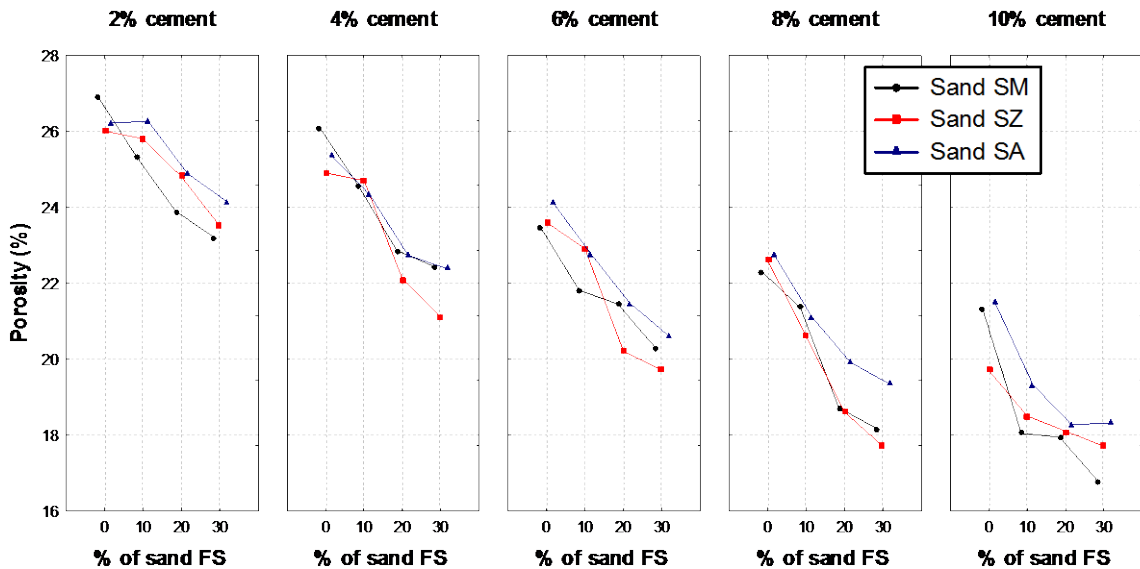


Figure 7 : Evolution of porosity as a function of the sand percentage (FS)

b) Relationship between porosity and the maximum dry density

Fig. 8 shows the relationship between porosity and the maximum dry density of the stabilized dune sands; the regression coefficient (R^2) is presented. We can notice that for different dune sands origins and different stabilization agent percentages the porosity accessible to water is significantly linked to the maximum dry density. A regression coefficient of more than (0.80) indicates a good relationship between

porosity and the maximum dry density [20]. This relationship is of decreasing order and follows a linear function. It can be represented by the equation: ($P = -36.12 \times \gamma_d + 87.33$); regression coefficient ($R^2 = 0.81$). These results show that it is possible to estimate the porosity of the stabilized dune sands when the maximum dry density is known. Where: P: porosity accessible to water (%); γ_d : maximum dry density (g/cm^3).

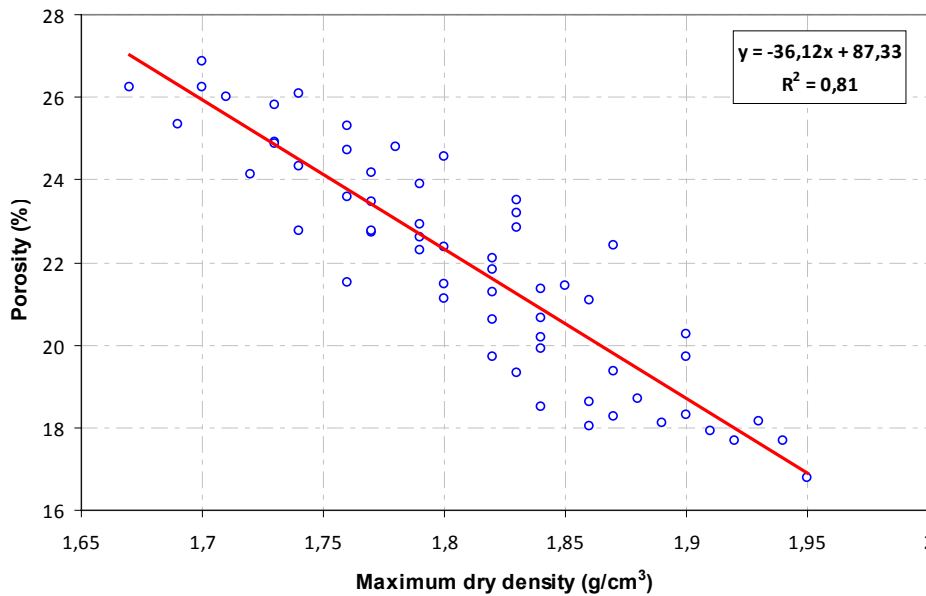
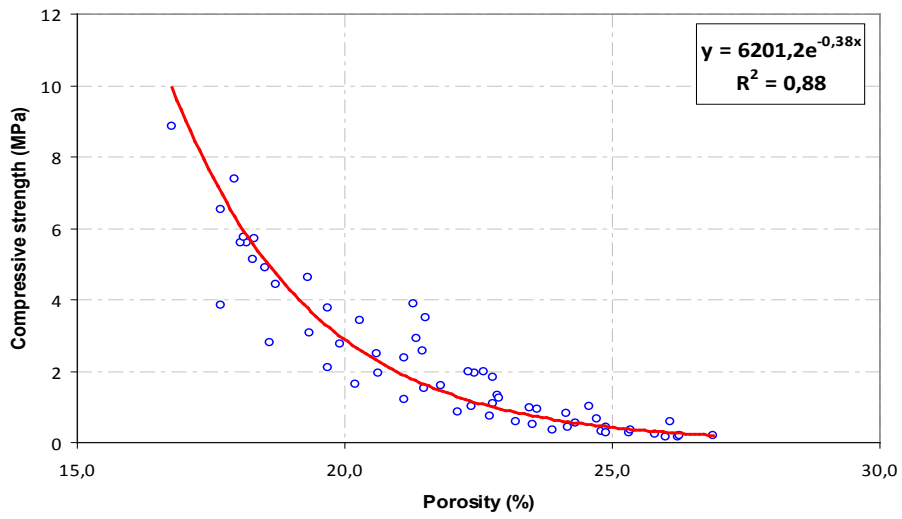


Figure 8 : Relationship between porosity and the maximum dry density

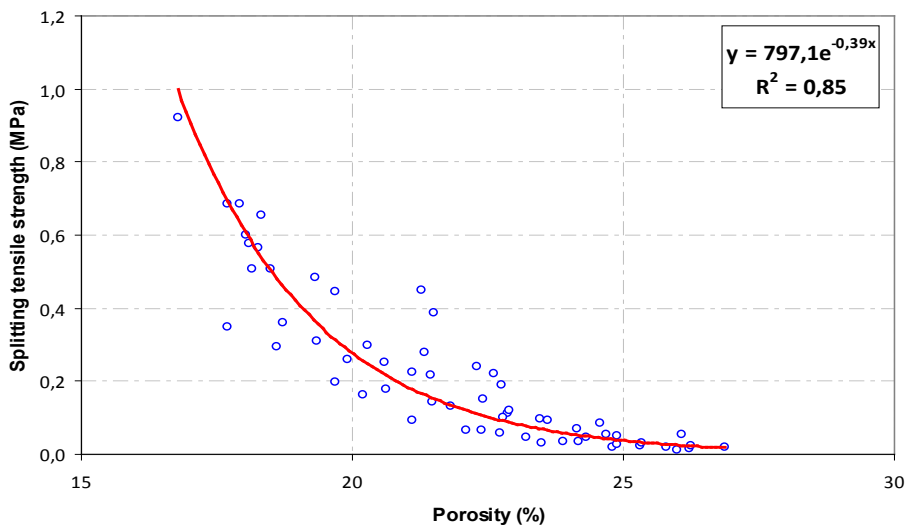
c) Relationship between porosity and the mechanical behavior

Fig. 9 indicates that the mechanical behavior (MB) of stabilized dune sands ((1) compressive strength, (2) the splitting tensile strength and (3) elasticity modulus) decrease with an increase in the porosity. The experimental data, depicted in Fig. 9, were utilized to develop a relationship equation between porosity and the mechanical behavior of the stabilized dune sands. The relationship between the fitted parameters is of decreasing order and follows an exponential function as: ($MB = a \times e^{(-b \times P)}$). Where: MB: are the mechanical behavior (compressive strength, the splitting tensile strength and elasticity modulus); P: is the porosity accessible to water; (a) and (b): are the empirical constants. The constants (a) and (b) were obtained through the regression analysis of the experimental data. The best-fit values of constants (a), (b) and the regression coefficient are summarized in Table 5. A regression coefficient of more than (0.85) indicates an excellent relationship between the fitted parameters [20]. Therefore, the data in Table 5 indicate a significant relationship between porosity and the mechanical behavior of the stabilized dune sands

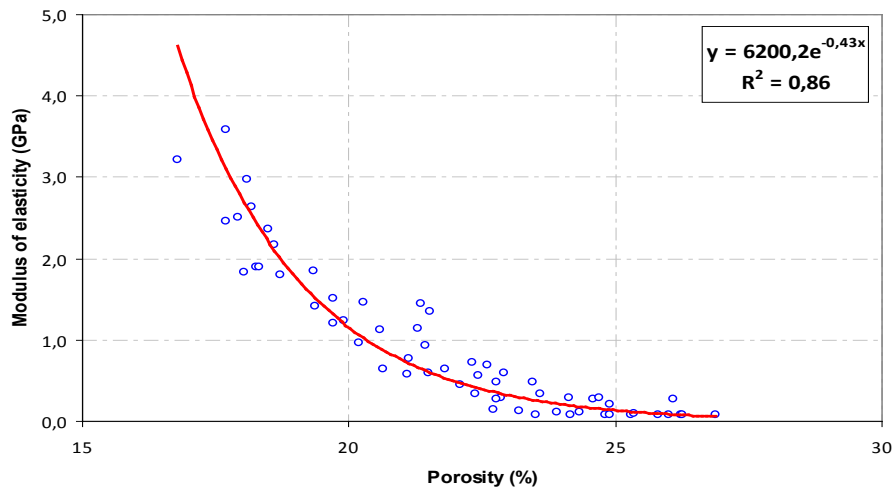
(compressive strength, the splitting tensile strength and elasticity modulus). It is to be noted that the relationship equation relating porosity accessible to water and mechanical behavior of the stabilized dune sands, developed in the present work, would help to estimate the compressive strength, the splitting tensile strength and elasticity modulus of these materials, irrespective of the dune sand origin and the stabilization agent content. It should be noted that the relationships reported in this paper were developed for the dune sands of the Djelfa region (Algeria), which have been stabilized by compaction and by addition of composite cement and the sand FS, as such similar relationships may need to be developed for other types of dune sands and agents of stabilization.



(1)



(2)



(3)

Figure 9 : Relationship between porosity and the mechanical behavior (MB), (1) : Compressive strength; (2) : Splitting tensile strength; (3) : Modulus of elasticity

Table 6 : Constants (a) and (b) and regressions coefficients (R²)

Mechanical behaviours (MB)	a	b	R ²
Compressive strength	6201.2	0.38	0.88
Splitting tensile strength	797.1	0.39	0.85
Modulus of elasticity	6200.2	0.43	0.86

IV. CONCLUSION

The main objective of this paper was to study the effects of the addition of stabilization agents on the porosity and its relationship with the maximum dry density and the mechanical behavior (compressive strength, the splitting tensile strength and elasticity modulus). Based on the results of this experimental study, the following conclusions could be drawn:

- The increase in the quantity of stabilization agent added to the mixture, influences negatively and in a very significant way the porosity. This indicates that the addition of cement and sand FS participates in the improvement of the mixtures compactness.
- For different dune sands origins and different stabilization agent percentages the porosity accessible to water is significantly linked to the maximum dry density. A regression coefficient of more than (0.80). Indicates a good relationship between porosity and the maximum dry density. This relationship shows that it is possible to estimate the porosity of stabilized dune sands when the maximum dry density is known.
- The mechanical behavior data of stabilized studied sands were related to the porosity accessible to water through a single equation noted below: (MB = a × e^(-b × P)). Where: MB: are the mechanical behavior (compressive strength, the splitting tensile strength and elasticity modulus); P: is the porosity accessible to water; (a) and (b): are the empirical constants. An excellent relationship was noted between mechanical behavior and the porosity accessible to water, expressed in terms of the above expression. The relationships developed in the present work are related to the dune sands of Djelfa region, the composite cement and the sand FS. They could be utilized to estimate the compressive strength, the splitting tensile strength and elasticity modulus of other stabilized sands knowing the porosity accessible to water, of course, with a certain error degree.

REFERENCES RÉFÉRENCES REFERENCIAS

1. Ghrieb A, Mitiche-Kettab R, Bali A. Stabilization and utilization of dune sand in road engineering. Arab J Sci Eng 2014. 39 (3) :1517-1529.
2. Mitiche-Kettab R, Ghrieb A, Serikma M. Physico-chemical soil stabilization: the case of sand dunes

- and tufts gypsum and limestone gypsum. 1^{er} séminaire international de génie civil CIGCB, Université de Bechar, Algérie, 06-07 Mars 2013.
3. AFPC-AFREM. Durability of concretes, recommended methods for measurement of quantities associated with the durability. Compte rendu des Journées Techniques AFPC-AFREM. Toulouse, France 1997. p. 283.
4. GBB - Groupement Belge du Béton. Concrete technology. Bruxelles 2006.
5. Ployaert C. Durability of concrete by mastering water absorption. Fédération de l'Industrie Cimentière Belge (FEBELCEM). Technologie, Bruxelles, Novembre 2009. p. 16.
6. Raphel J. M. Tensile strength of concrete. J Am Concr Inst 1984;81 (2):158-65.
7. Torrent RJ. A general relation between tensile strength and specimen geometry for concrete-like materials. Mater Struct 1977;10(4):187-96.
8. Bogue R.H. Chemistry of Portland cement. 2nd ed. New York: Reinhold Publishing Corp 1955. p. 790.
9. Chauvin J.J. Sands: technical guide road-use. ISTED, France 1987. p.76.
10. ASTM D1557-09. Standard test methods for laboratory compaction characteristics of soil. 2009.
11. AFNOR (NF EN 13286-41). Mixtures treated and not treated with hydraulically bound mixtures - Part 41: test method for the determination of the compressive strength of the mixtures treated with hydraulic binders. 2003.
12. AFNOR (NF EN 13286-42). Mixtures treated and not treated with hydraulically bound mixtures - Part 42: test method for the determination of the indirect tensile strength of treated with hydraulic binders mixtures. 2003.
13. ASTM C469. Standard test method for static modulus of elasticity and Poisson's ratio of concrete in compression. Annual Book of ASTM Standard 04; 2002.
14. Xudong C, Shengxing W, Jikai Z. Influence of porosity on compressive and tensile strength of cement mortar. Constr Build Mater 2013;40 (3): 869-74.
15. Matusinovic T, Sipusic J, Vrbos N. Porosity-strength relation in calcium aluminate cement pastes. Cem Concr Res 2003; 33 (11):1801-6.
16. Papayianni I, Stefanidou M. Strength-porosity relationships in lime-pozzolan mortars. Constr Build Mater 2006; 20(9):700-5.
17. Chindaprasirt P, Rukzon S. Strength, porosity and corrosion resistance of ternary blend Portland cement, rice husk ash and fly ash mortar. Constr Build Mater 2008; 22 (8):1601-6.
18. AFNOR (NF EN 13286-53). Mixtures treated and not treated with hydraulically bound mixtures - Part 53: Method for confection axial compression specimens of treated with hydraulic binders materials. 2005.

19. Al-Amoudi O, Khan K, Al-Kahtani N. Stabilization of a Saudi calcareous marl soil. *Constr Build Mater* 2010; 24 (10):1848-54.
20. Montgomery DC, Peck EA. *Introduction to linear regression analysis*. New York: Wiley 1982.