



GLOBAL JOURNAL OF RESEARCHES IN ENGINEERING: E  
CIVIL AND STRUCTURAL ENGINEERING  
Volume 14 Issue 3 Version 1.0 Year 2014  
Type: Double Blind Peer Reviewed International Research Journal  
Publisher: Global Journals Inc. (USA)  
Online ISSN: 2249-4596 & Print ISSN: 0975-5861

# Systems Dynamics Simulation Modeling of Transit Oriented Land use Development of a Rail Corridor in Chennai

By Mrs. M. Vijayalakshmi & Dr. G. Umadevi

*Anna University, India*

**Abstract-** The growing concern of rapid increase in urban population and vehicular growth culminates into emerging of many metropolitan cities. In such areas, spatial distribution of activities warrant, the necessity for travel by appropriate arrangement of sub-systems in tune with the form of urban structure and routes serving it. In Chennai, the present modal split revealed that only 40% of the travel in the City is made by public transport as against a minimum of 70% recommended by the study group or alternative systems of urban transport system. The modal split between bus and train will have to change from 88:12 (2004) to 60:40 (2026). It calls for a strategy reorienting the travel by appropriately manipulating the policies so as to increase the share of Public Transport.

Hence, there is an urgent need to study the land use transport interaction along the suburban rail corridor to increase patronage. The northern region suburban railway line of Chennai Metropolitan Area is taken as the study from Chennai Central to Gummidipoondi. An opinion survey has been conducted during morning and evening peak period to know the opinion of the train passenger, mode used and distance traveled from origin to station and station to destination was collected. It is found that the majority of originating points are within 2.50km from the station locations. Hence, in this study an attempt is made to find the trend of land use disposition in various periods. Land use map prepared by digital image processing methods using ERDAS Imagine 8.7 software, panchromatic aerial photograph, IRS1D, IRS P6 LISS III Digital data. As the assessment of patronage along the corridor involves a large number of complex and dynamic variables suitable simulation software, namely a dynamic package called STELLA is used to develop the model and test the same for various simulations. Application of this model to similar urban area with moderate modifications will prove to be valid. Further, the model can also be extended micro level planning on a zonal basis.

*GJRE-E Classification : FOR Code: 090599*



*Strictly as per the compliance and regulations of :*



# Systems Dynamics Simulation Modeling of Transit Oriented Land use Development of a Rail Corridor in Chennai

Mrs. M. Vijayalakshmi<sup>a</sup> & Dr. G. Umadevi<sup>σ</sup>

**Abstract-** The growing concern of rapid increase in urban population and vehicular growth culminates into emerging of many metropolitan cities. In such areas, spatial distribution of activities warrant, the necessity for travel by appropriate arrangement of sub-systems in tune with the form of urban structure and routes serving it. In Chennai, the present modal split revealed that only 40% of the travel in the City is made by public transport as against a minimum of 70% recommended by the study group or alternative systems of urban transport system. The modal split between bus and train will have to change from 88:12 (2004) to 60:40 (2026). It calls for a strategy reorienting the travel by appropriately manipulating the policies so as to increase the share of Public Transport.

Hence, there is an urgent need to study the land use transport interaction along the suburban rail corridor to increase patronage. The northern region suburban railway line of Chennai Metropolitan Area is taken as the study from Chennai Central to Gummidiipoondi. An opinion survey has been conducted during morning and evening peak period to know the opinion of the train passenger, mode used and distance traveled from origin to station and station to destination was collected. It is found that the majority of originating points are within 2.50km from the station locations. Hence, in this study an attempt is made to find the trend of land use disposition in various periods. Land use map prepared by digital image processing methods using ERDAS Imagine 8.7 software, panchromatic aerial photograph, IRS1D, IRS P6 LISS III Digital data. As the assessment of patronage along the corridor involves a large number of complex and dynamic variables suitable simulation software, namely a dynamic package called STELLA is used to develop the model and test the same for various simulations. Application of this model to similar urban area with moderate modifications will prove to be valid. Further, the model can also be extended micro level planning on a zonal basis.

## I. INTRODUCTION

Good transportation system plays a vital role in the overall development of a nation's economy particularly in an urban context. The persistent inadequacy of mass transport facilities in the urban areas has forced individuals to use personalized modes. As a result, there is increased growth of vehicles, especially two wheelers and cars in Indian roads. The

*Author a:* Ph.D. Research Scholar, Division of Transportation Engineering, College of Engineering Guindy, (CEG), Anna University, Chennai 600 025.

*Author σ:* Associate Professor, Division of Transportation Engineering, College of Engineering Guindy, (CEG), Anna University, Chennai 600 025. e-mail: gudevi@annauniv.edu

existing road network is inadequate and deficient to accommodate the growing vehicular population. This leads to congestion, delay and concomitant pollution of all sorts.

Public transport in India can be into two major modes: rail and road. Out of the country's total passenger movement, 80 percent is met by road transport while remaining 20 percent is carried by railways (Kaushik Deb 2002). These calls for urgent measures and an effective way to address this problem. Thus it is necessary to encourage greater use of public transport especially rail transport instead of personalized vehicles. This can be achieved through Transit Oriented Land Use Development (TOD).

## II. LAND USE TRANSPORT INTERACTION

Conventional transport planning involves assessment of travel demand for given set of land use development and prediction for an anticipated set of land use developments. In practice due to high capital costs, neither the projects identified to cater future rail transport demand have been executed, nor the land use developments has occurred as anticipated. One of the main reasons for such failure is lack of proper appreciation of landuse transport interaction (Kumaravelu 2001). Since landuse and transport systems are more dynamic, it is imperative that the land use - transport model needs to be developed to represent dynamic behavior both with its interaction in the urban area.

## III. NEED FOR THE STUDY

Urbanization is a perpetual process. Due to urbanization, the kind of development taking place in most of the Indian cities is in an unplanned manner. Huge influx of population from rural to urban areas in terms of social increase and its natural growth have induced greater demand for travel. The population and vehicular population in Indian cities are increasing alarmingly but the road networks in these cities had not been planned to carry the present day traffic. The area occupied by roads and streets in class – I cities in India is only 16.10 percent of the total developed area while the corresponding figure for the USA is 28.19 percent. Apart from this, the inadequate civic and transport

infrastructure results in traffic congestion and deterioration of urban environment.

In a paper (Arrington Parsons Brinckerhoff 2004) on "Light Rail Transit and Transit Oriented Development" presented an overview of elements of a successful integrated LRT and TOD strategy. Designing development oriented transit and achieving supportive public policy were examined. He even said that "built it and they will come" is a theory i.e. "Building transit first, in the hope development will follow". A successful TOD reinforces both the community and the transit system. At an individual station TOD can increase ridership by 20% to 40% and upto 5% overall at the regional level.

It is estimated that the rail based system will be required in Cities with population more than 2 million and are generally expected to have transport corridors with maximum demand upto 20,000 peak hour peak direction trips (phpdt) (Vinod Sibal and Yash Sachdeva 2001). There is a need to encourage the use of public transport system especially rail transit mode to achieve sustainable development in the long run. Hence an attempt is made in this present research work to study the land use changes, travel patterns along the corridor and to study the operational characteristics and utilization of existing railway line and bus services.

#### IV. OBJECTIVES OF THE STUDY

Keeping in view of the necessity of Transit Oriented Development, the objectives of this study have been framed as follows:

- To study the past and present use of land along the rail corridor to detect the changes in land use in order to plan for its optimal use.
- To study the operation of both rail and bus transportation system and understand the existing level of utilization.
- To understand and appreciate the characteristics of the user groups of both rail and bus systems and characteristics of households settled along transit corridor.
- To develop a System Dynamic Simulation model for encouraging Transit Oriented Land Use Development.
- To evaluate relevant policy options relating to land use and transport integration towards optimal utilisation of public transport especially rail, to achieve sustainable development in the long run.

#### V. STUDY METHODOLOGY

The study methodology is shown in Figure 1. It involves study on Land use changes for various periods using Remote Sensing Analysis and building of System Dynamics Model for various scenario options:

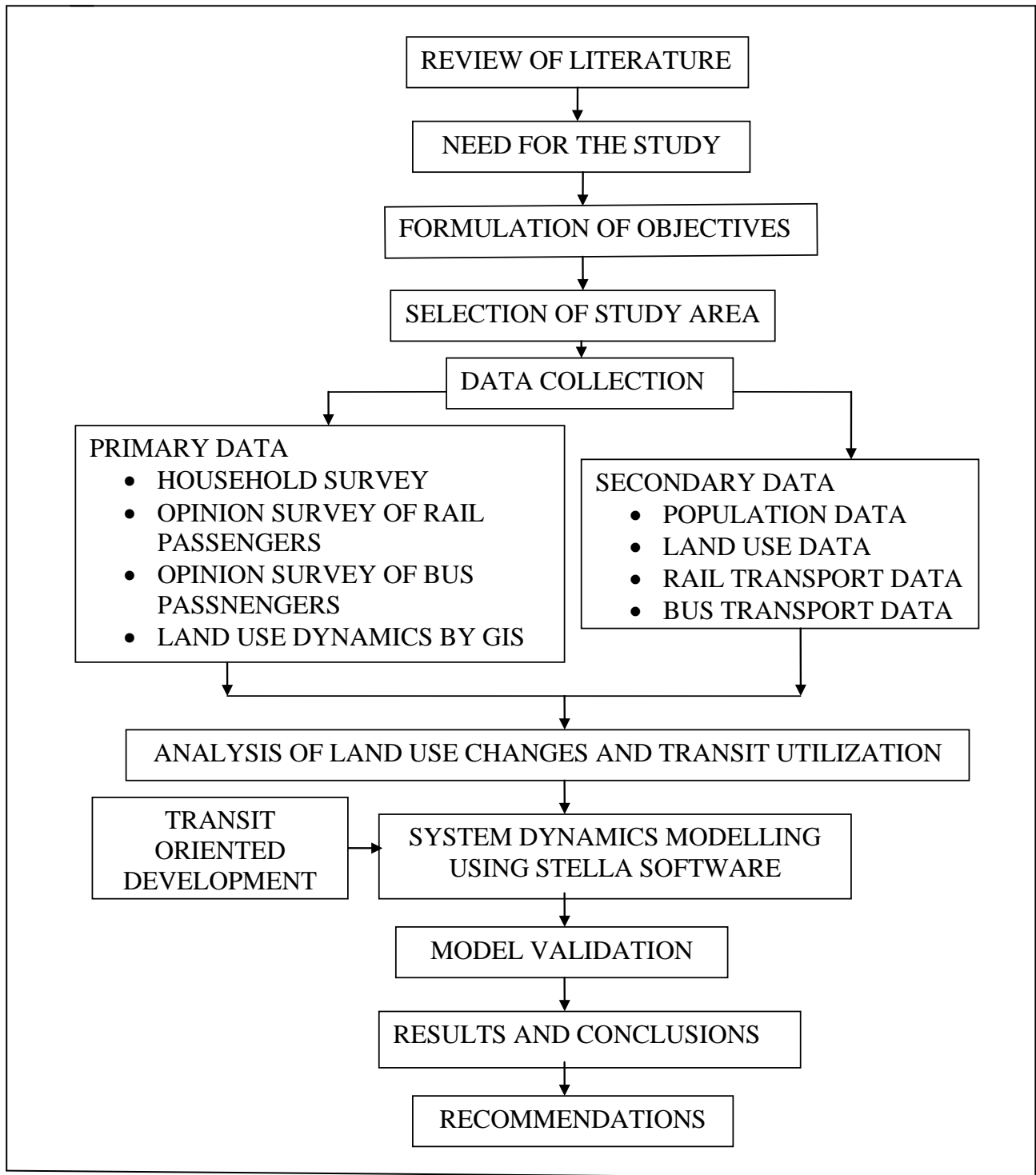


Figure 1 : Study Methodology

## VI. IDENTIFICATION AND DELINEATION OF STUDY AREA

Chennai Central to Gummidipoondi Corridor has been identified as low patronage one compare to other suburban corridors. The Table 1 gives the characteristics of various stations in suburban corridor.

The influence area of stations was assessed based on a survey of boarding passengers. The questionnaire survey has been conducted during the morning and evening peak hours. The walking distance of passengers was one of the criteria chosen to delineate influence areas. The line up to Chennai City and CMA are taken as segment I and segment II. The analysis of

the survey data showed that the majority of originating points and destination points are within 1.00km by walk and 2.50km by walk and other personalised and paratransit modes.

### VII. LAND USE CHANGE DETECTION

A spatial methodology was used for land use change detection. It involved four steps, namely Preparation of land use map, Digitization of land use maps, Integration of classified land use maps, Analysis of land use changes during 1986 to 1996 and 1996 to 2006 and Analysis of land use development along railway line at a distance of 0.50 km, 1.00 km and 2.50 km. These steps are shown in Figure 5.32 and

discussed in the following sections. Data used for the land use analysis are namely , Panchromatic Aerial Photograph (1986 on 1: 50,000 scale), Satellite data IRS-1C (1996 on 1:50,000 scale) and Satellite data IRS-P6, and LISS III digital data (2006) were acquired. The survey of India toposheets on 1:50,000 scale were used as a reference data.

### VIII. PREPARATION OF LAND USE MAP

Base map on 1:50,000 scale was prepared from the Survey of India toposheets on the same scale. After scanning all imageries, land use classification was prepared. Land use map was prepared by Digital Image Processing method using Erdas Imagine 8.7 Software.

Table 1 : Characteristics of various Stations in the study corridor

Sl. No.	Name of stations	Distance in km	Inter-station distance in km
1	Chennai central	0.00	0.00
2	Basin Bridge	2.22	2.22
3	Korukkupet	2.93	0.71
4	Tondiarpet	4.08	1.15
5	Tondiarpet Marshalling Yard	5.73	1.65
6	Tiruvottiyur	7.81	2.08
7	Wimco Nagar	10.31	2.5
8	Kathivakkam	13.33	3.02
9	Ennore	14.88	1.55
10	Attipattu Pudunagar	19.1	4.22
11	Nandiyambakkam	20.88	1.78
12	Attipattu	22.16	1.28
13	Minjur	24.78	2.62
14	Anuppampattu	28.79	4.01
15	Ponneri	33.48	4.69
16	Kavaraipettai	40.16	6.68
17	Gummidipoondi	46.08	5.92

Source: Southern Railways

Supervised classification was applied to derive the landform in the study area. The classification was residential, commercial, institutional, industrial, agricultural, waste land, water bodies, vacant land and others. Based on this category, land use maps were prepared through visual interpretation of imageries.

#### a) Digitization of Land use Maps

Visual interpretation of base maps, and land use maps were digitized in ArcGIS 9.1 software and edited in Arc Tool Box in GIS environment. After digitizing the study area, different themes like residential, commercial, institutional, industrial (all polygon themes) and the corresponding land uses were digitized from the land use data obtained from the remote sensing satellite. The rail station theme is created to indicate the location of the rail station in the area. The land use themes are created to represent the type of land uses in and around the rail stations.

#### b) Assessment on Changes in Land Use

Based on the aggregated data, land use maps of different years i.e., 1986, 1996 and 2006 were

prepared and the land use maps are presented respectively in fig.2, fig.3 and fig.4. It could be observed from all the three maps that the substantial amount of shift from residential to commercial. These changes are represented in the form of a schematic diagram in figures. The land use development and growth pattern along the development corridor clearly are depicted in various periods. Using GIS package in ARC/INFO environment, land use information was integrated for generating maps for these years. A comparison of maps would reveal enormous changes in the pattern of land use.

From the analysis, it is observed that most of the agricultural, water bodies, vacant land and waste lands are converted to residential areas due to the pressure of urbanization. The area enclosed near rail corridor is very densely populated. The urban sprawl is extending heavily to the Northern side along the Chennai Central to Gummidipoondi suburban rail corridor.

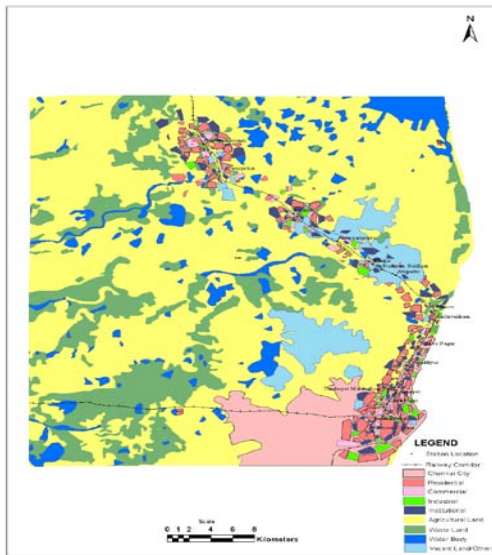


Figure 2 : Extent of Land Use in 1986

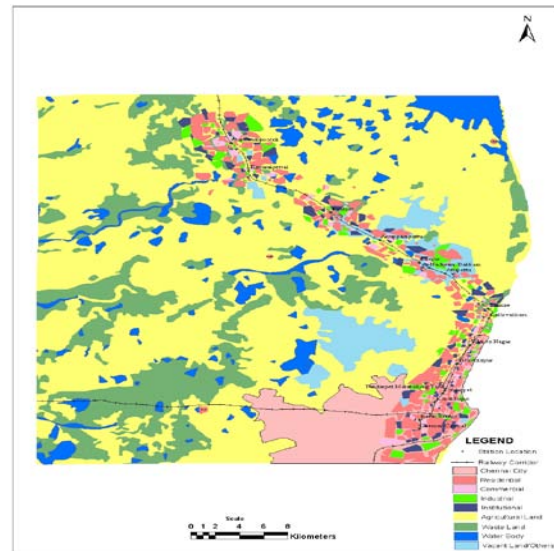


Figure 3 : Extent of Land Use in 1996

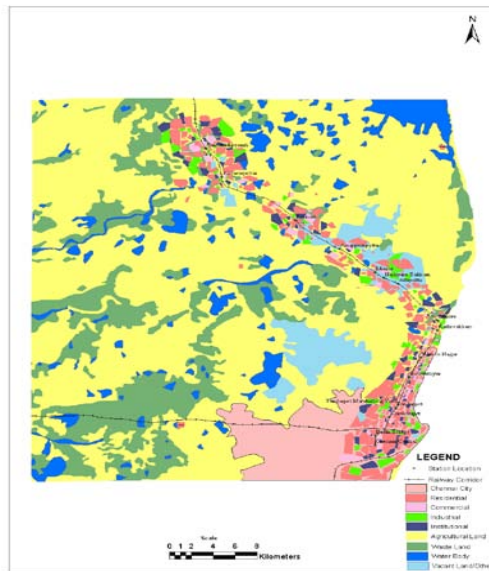


Figure 4 : Extent of Land Use in 2006

Table 2 : Details on Various Land Uses for Three Time Period

Land Use Category	Area (sq.km.)	Percentage of CMA	Area (sq.km.)	Percentage of CMA	Area (Sq.km.)	Percentage of CMA
Year	1986		1996		2006	
Residential	29.64	11.62	42.60	16.71	53.55	21.00
Commercial	4.97	1.95	5.32	2.09	6.51	2.55
Institutional	6.59	2.58	7.47	2.93	8.72	3.42
Industrial	14.33	5.62	15.86	6.22	18.16	7.12
Waste land	16.72	6.56	17.02	6.67	15.33	6.01
Water bodies	22.68	8.89	20.67	8.11	17.06	6.69
Agriculture	136.81	53.65	124.11	48.67	119.29	46.78
Vacant land	16.72	6.56	14.45	5.67	7.96	3.12
Others	6.54	2.56	7.51	2.95	8.43	3.31
Total	255.00	100.00	255.01	100.00	255.01	100.00

Source: Study Analysis

The decennial trend of land use is shown in Table 2 for three time periods. It is obtained that the existing activity pattern in study area in segment I indicate a development which is constrained due to congestion, excess use of infrastructure facilities and lack of vacant land. Since the area is densely developed, it offers limited scope for further intensification, only densification is possible with increased FSI, depending on the infrastructure availability in the stretch. Whereas in segment II area along the corridor, there is a scope for inducing both accelerating development and densification is possible due to availability of vacant lands.

c) Buffer Analysis

The existing land use characteristics in the year 2006, are analysed with multiple buffers along rail

stations. In this case three buffers have been created with a radius of 0.50 km, 1.00 km and 2.50 km taking rail stations as the center. The land use details are tabulated in Table 3 which indicates the less proportion of land use mix in first buffer when compared to other two. The corridor passes through industrial and residential area. Within the City, the area has less vacant land, it offers limited scope for densification, only infill and intensification are possible. In this corridor one side is covered by sea and this also reduces developments along this corridor. Whereas in the Chennai Metropolitan Area and outside the CMA area there is scope for accelerated development and intensification and for inducing densification since this area has more vacant and agricultural lands.

Table 3 : Land Use Statistics Along Rail Corridor in 2006 (Radius 0.5/1.00/2.50 km)

Land Use Category	Area (sq.km.)	Percentage of CMA	Area (sq.km.)	Percentage of CMA	Area (sq.km.)	Percentage of CMA
Radius in Buffer	0.50 km		1.00 km		2.50 km	
Residential	11.97	25.47	26.67	27.78	53.55	21.00
Commercial	2.46	5.23	4.85	5.05	6.51	2.55
Institutional	3.02	6.43	5.63	5.86	8.72	3.42
Industrial	7.56	16.09	12.51	13.03	18.16	7.12
Waste land	1.73	3.68	4.30	4.48	15.33	6.01
Water bodies	3.12	6.64	5.45	5.68	17.06	6.69
Agriculture	12.17	25.89	26.64	27.75	119.29	46.78
Vacant land	2.52	5.36	4.47	4.66	7.96	3.12
Others	2.45	5.21	5.48	5.71	8.43	3.31
	47.00	100.00	96.00	100.00	255.00	100.00

Source: Study Analysis

For this project the area within an influence distance of different buffers has to be calculated station area wise. To calculate this area a buffer has to be created around the railway line for the respective distances. Creation of buffer is a type of proximity analysis in GIS. The buffer actually overlaid on the land use map. Hence, the land use map is given as the first input followed by the buffer and the developments.

The buffer theme is created with multiple buffers around the rail stations. In this case three buffers have been created with a radius of 0.50 km, 1.00 km and 2.50 km taking the rail station as the center. The land use maps are presented in fig.2, fig.3 and fig.4 The land use areas taken as inputs for developing models. The land use maps are given in Figures 5.36, 5.37 and 5.38. It is observed that up to 1.00 km density is high; beyond that it is less. Chennai city is denser than outer city limit. The industries occupy nearby station area within city and outer city is sparsely developed, without adequate infrastructure facilities, discourage the rail user.

Study of the existing pattern of land use of study area clearly shows that developments have mainly

occurred along railway stations with mixed land uses due to improper planning. Commercial areas have developed mainly along road leading to railway station and around market. Industrial uses have come up near railway line in segment I. Water bodies, vacant land, Waste land and Agriculture occupies major portion of the land. Existing land use reveals that urban sprawl occur due to the absence of any comprehensive planned development.

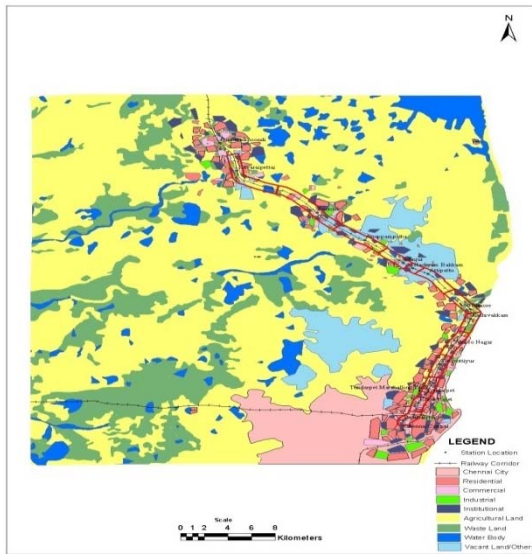


Figure 5 : Station Area Land Use in 2006 (0.5 km Buffer)

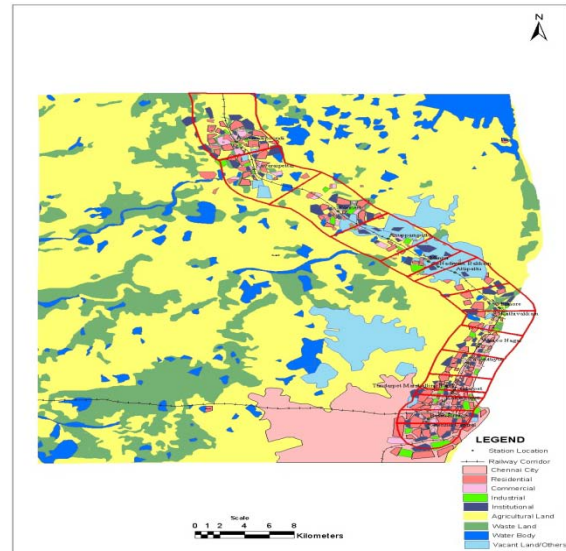


Figure 7 : Station Area Land Use in 2006 (2.5 km Buffer)

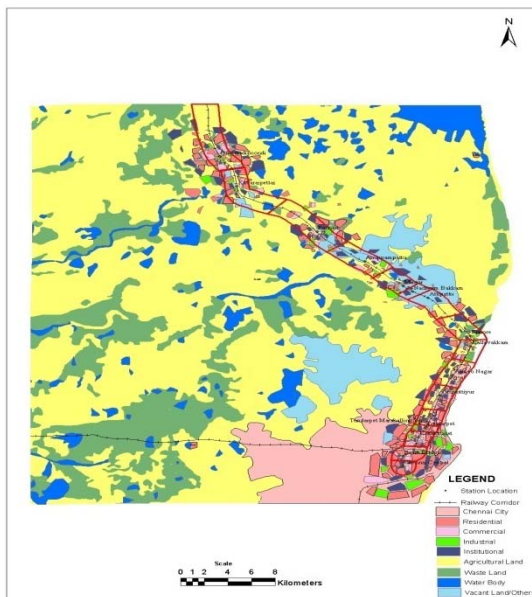


Figure 6 : Station Area Land Use in 2006 (1 km Buffer)

The existing land use pattern along the suburban train corridor is analysed using Geographic Information System. The existing land use in 2001, existing suburban train corridor accommodated 10.62 lakhs population in segment I and 2.90 lakhs population in segment II. The population break-up for each station is collected. It is divided into two parts: segment I (within Chennai City) and segment II (Outer Chennai City). Densification prospects are very high in segment II than segment I.

## IX. SYSTEM CHARACTERISTICS AND PATRONAGE EVALUATION

In 2006, suburban train operates 78 services per day between Chennai Central and Gummidipoondi at a distance of 46.08 km, inter-station distance of 3.29 km. The maximum frequency is 4 trains per hour and off-peak is only 1 train per hour. The transit unit carries a capacity of 2760 passengers per transit unit. Each car rake / Electrical Multiple Unit has a carrying capacity of 306 passengers (including sitting and standing). The minimum headway that can be maintained for the present system is every 15 minutes (Southern Railways 2006).

### a) Evaluation of Ridership

One of the main objectives of the study is to estimate the present ridership along the suburban rail system. Hence, a survey on passenger boarding and alighting was carried out on April 2005 during morning and evening peak hours.

The analysis gives the following details:

- Hourly variation of Passenger trips
- Directional Patronage
- Analysis on highly patronized stations

In study corridor, it is observed that maximum passenger trips hourly variation is 3800. Directional patronage clearly indicates that towards Gummidipoondi traffic is heavy during morning hours. The directional split during the morning period is 64:36. Morning passenger trip is 15426 and evening passenger trips is 14560. This justifies that the evening passenger trips are return trips. Peak period is observed between 7:00 AM and 9:00 AM in the morning and the evening peak between 5:00 PM and 7:00 PM. The suburban



stations are classified into four major categories based on the number of passengers handled per day which ranges from 2,000 to 10,000 passengers.

#### b) *Train Passenger loading analysis*

From the total number of trips handled per day at different stations during the year 2003-04, it has been observed that the number of trips handled at Chennai Central is maximum and Basin Bridge handled at minimum. In this corridor, Industries are clustered around railway stations, Residential and Commercial locations are found close to National Highways not close to railways.

For Chennai Central–Gummidipoondi, station to station passenger loading and section wise passenger loading is analyzed. It is found that 11.85 million commuters have traveled in 2003-04. On an average 0.66 lakhs of commuters travel in a day within the corridor Chennai Central – Gummidipoondi but approximately station wise boarding and alighting passengers per day is 1.08 lakhs. From that, it is found that other corridor passenger using this corridor. Hence it is clear that inter corridor traveling also prevails to certain extent.

## X. ANALYSIS AND MODEL DEVELOPMENT

The model of the Population, Land Use and Transport interaction using the System Dynamics (SD) approach has been implemented in the 'STELLA' environment ('STELLA 8.1' package). The modeling tool which is an object-oriented simulation environment allows the development of Transport Energy interaction models with significantly less effort than using traditional programming languages. It has a user-friendly graphical interface and supports modular program development. Using this tool, the modeller defines objects representing physical or conceptual system components and indicates the functional relationships among these objects. Building on these strengths, the general architecture of the present work is framed.

#### a) *Phases of Model Building Process*

Generally the model building process can be divided into two phases namely the Conceptual phase and the Technical phase. It is the process of defining a problem out of a situation, developing various relationships quantitatively, testing the model with several policy options and analysing the behaviour of the model.

The first phase in the model building process involves recognizing and defining a problem. Important properties of dynamic problems are that they contain quantities that vary over time. System Conceptualization phase involves committing to paper the important influences believed to be operating within the system. Systems may be represented on paper in several fashions and the three most common being causal-loop

diagram, plots of variables against time and computer flow diagrams. In model representation Phase, models are represented in the form of computer code that can be fed into the computer, that is in the form of computer programming languages. Under model behavior phase, simulation is carried out in this phase to determine how all the variables within the system behave over a period of time.

In model validation stage numerous tests must be performed on the model to evaluate its quality and validity. These tests range from checking for logical consistency, to matching model output against observed data collected over time for validating the model and to more formal statistical significance of the parameters used within the simulation process. Policy analysis and model use is the final phase, here the model is used to test alternative policies that might be implemented in the system under study. This phase of the model building process is perhaps the most difficult.

#### b) *Building Blocks of Model*

The System Dynamics tool used in this study to model population, land use and transport interaction has four basic building blocks as listed below.

- **Stock**  
Stocks or levels are used to represent anything that accumulates. An example of stock would be population level at one time.
- **Flows**  
Flows or rates represent activities that increase and decrease stocks. An example of flow includes birth rate and death rate.
- **Connectors**  
Connectors are used to establish the relationship among variables in the model. The software represents them graphically as arrows. They carry information, which can be a quantity, constants, an algebraic relationship or a graphical relationship.
- **Converters**  
Converters transform input to output. Converters can accept input in the form of algebraic relationships, graphs and Tables. For ease of presentation, the symbols used for flow diagramming of System Dynamics are presented in the Figure 8.

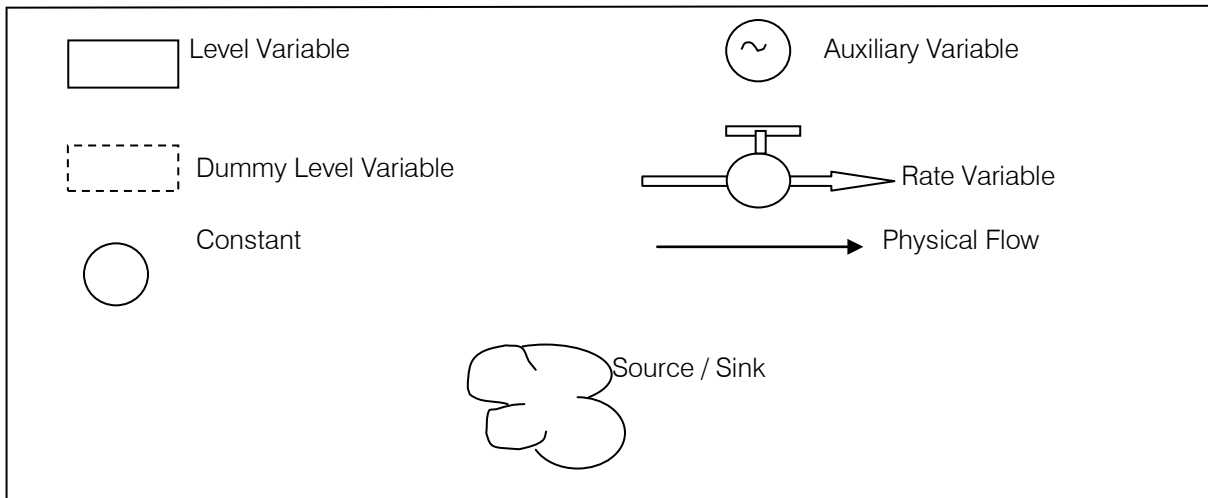


Figure 8 : Flow Diagramming Symbols

c) *Population Sector*

The system dynamic model is as shown in Figure 2. Population is influenced by the Birth rate, Death rate, In-migration and Out-migration. The Birth

Rate (BR) is influenced by the Birth rate normal (BF N), which is expressed as the number of birth per thousand. BR is determined by multiplying population with BF

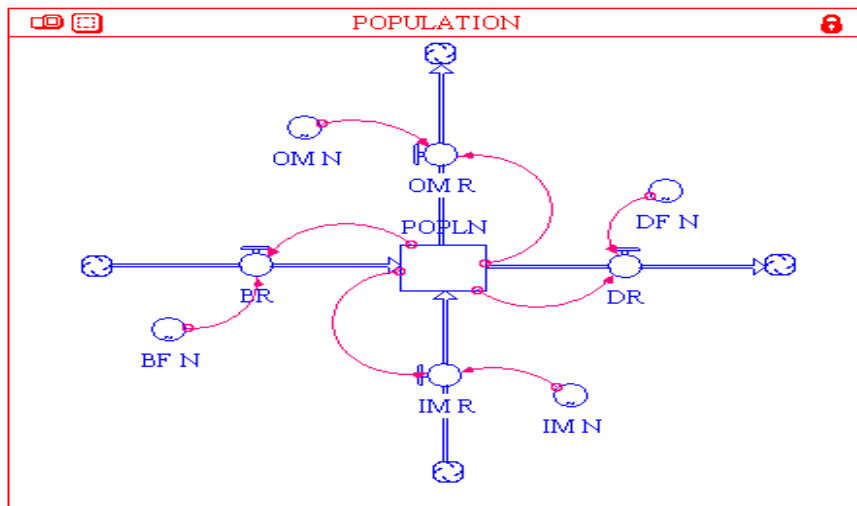


Figure 9 : Population Model

d) *Land use Sector*

The landuse sector is illustrated in Figure 3; it is used to simulate the changes in the various landuses. From the past and present landuse data collected, the rate of change of land uses have been determined. Landuse conversions from other land area (OTH AR) to rip generating residential land area (GEN AR), from trip generating land area to commercial area (COM AR) was determined and projected. From the GEN AR, FAR and Population projected from the population sector, the Density is calculated. All areas other than GEN AR and OTH AR are considered to be Trip Attracting Areas (ATT AR). The total developed area (TD AR) is sum of ATT AR and GEN AR.

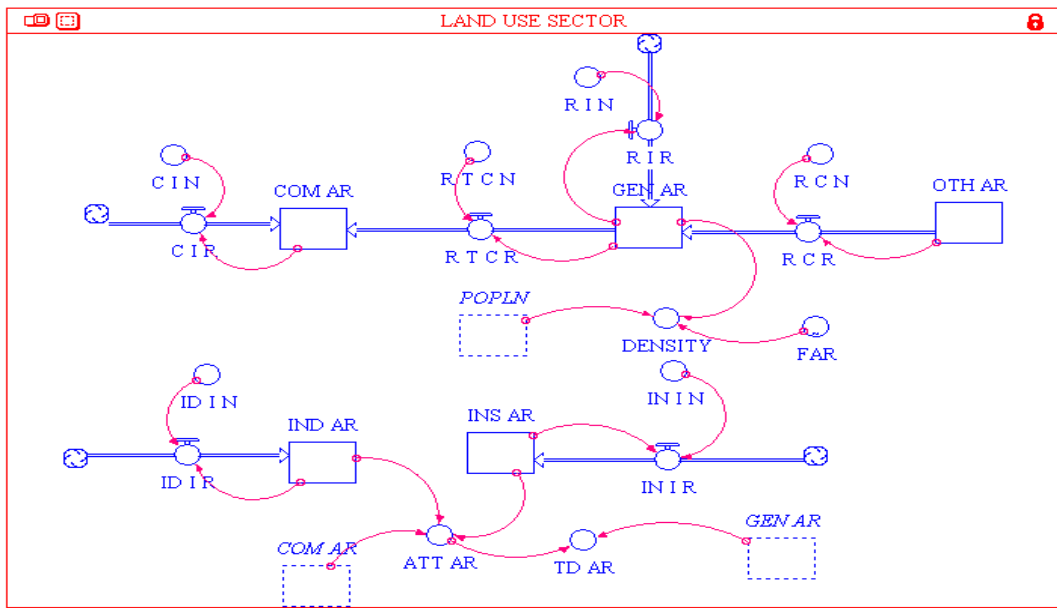


Figure 8 : Land Use Model

e) Transport Sector

In order to evaluate the trip production, transport sector (Figure 4) is considered in the study. The public transport system in the study area comprises of both road and rail facilities. The objective of the land use transport model is to bring sustainable land use development through rail transit ridership. Therefore, the model is tested for various policies to obtain an optimum

land use and transport facilities. Switchover of passengers from personal modes (PVT TRP) and bus (TOT BUS TRP) to rail (TOT RAIL TRP) is considered. The public and personal modal trips are calculated from the total trips (TOT TRP) using respective model fractions from (PUB TRP) the public transport trip the bus and rail trips are derived. The simulation values in segment I is given in Table 3.

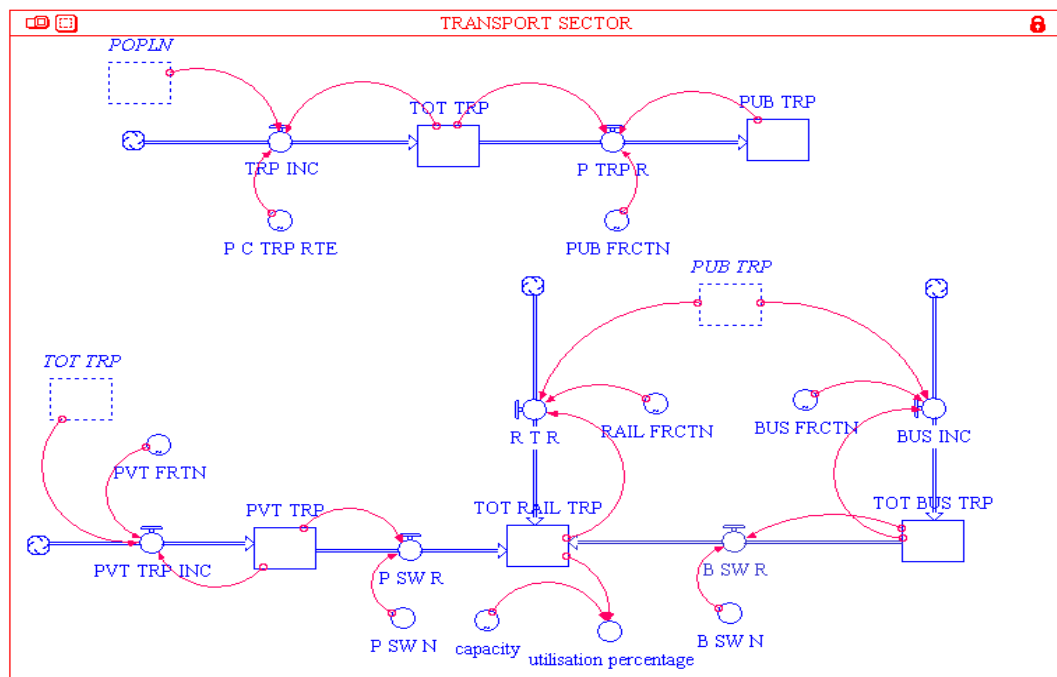


Figure 11 : Transport Model

Table 4 : Results of All the three Simulations in segment I Model (Horizon year 2026)

Simulation	Population	Density (persons/ha.)	Total trips	Rail trips	Bus trips	Public transport trips
Simulation I (Do Minimum)	13,02,305	338	20,69,098	1,98,350	5,83,180	6,69,986
Simulation II (By increasing FSI 1.5- 3.00 and rail operations)	21,73,690	282	35,00,638	5,72,826	12,30,887	18,55,089
Simulation III (By increasing FSI 1.5-4.00, rail operations and addition of new lines)	28,74,338	280	46,04,386	12,06,008	17,20,278	30,65,982

Source: Primary Analysis

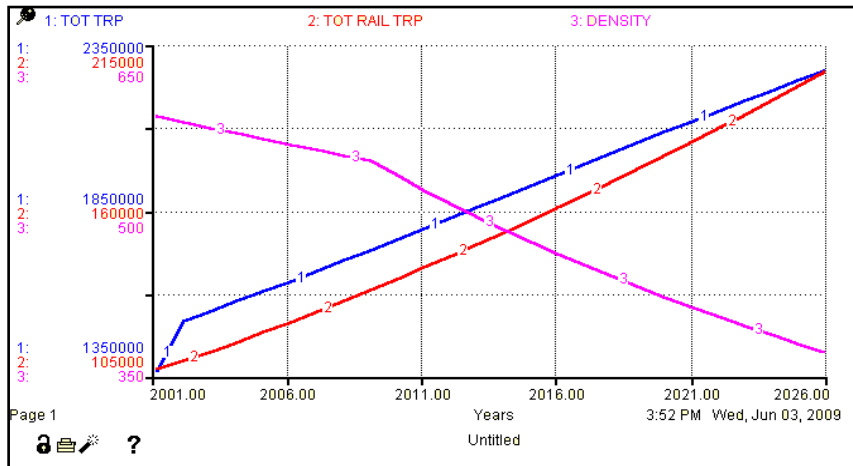


Figure 12 : Sensitivity of Population on Model results

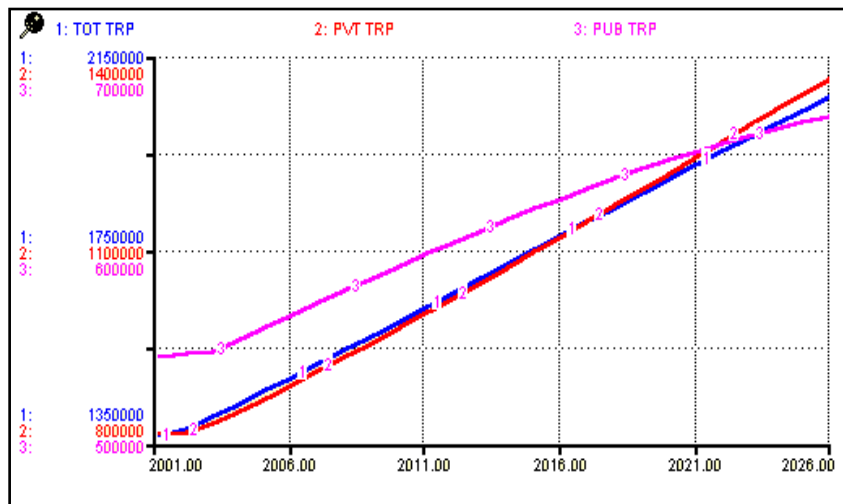


Figure 13 : Results of Transport Model -Simulation I

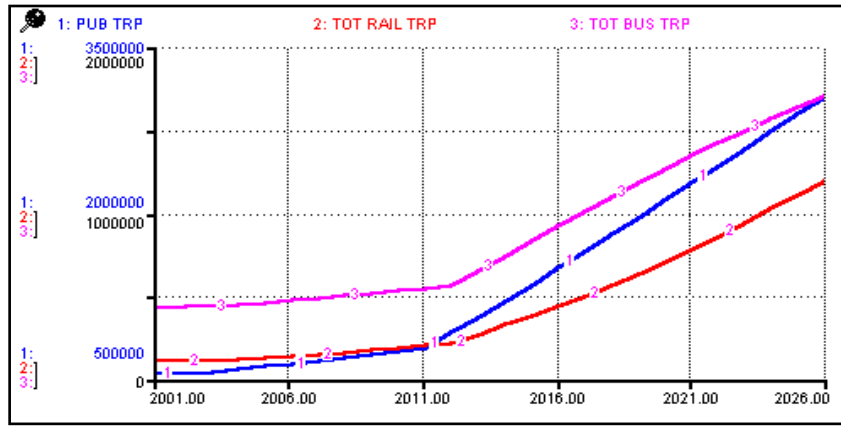


Figure 14 : Results of Transport Model – Simulation III

Hence among the three Simulations the last Simulation namely Simulation III is revealing good share of rail transit trip to achieve sustainable development. When the model is validated for the year 2001, it shows that the model results coincide with the actual values with a maximum deviation of 1.52 percent. Hence the

simulated result revealed good approach to the actual, with quite tolerable deviation. Similarly the various simulations are generated in segment II area. The simulation values in segment II is given in Table 4. The results of segment II model are given in Figure 9 to 11.

Table 5 : Results of All the three Simulations for segment II Model (Horizon year 2026)

Simulation	Population	Density (persons/ha.)	Total trips	Rail trips	Bus trips	Public transport trips
Simulation I (Do Minimum)	11,18,141	107	16,92,165	1,41,735	3,98,676	5,21,391
Simulation II (By increasing FSI 1.5- 3.00 and rail operations)	24,97,246	197	37,45,382	5,17,378	11,59,746	18,50,967
Simulation III (By increasing FSI 1.5-4.00, rail operations and addition of new lines )	35,18,785	208	52,21,294	11,51,717	17,06,253	32,26,697

Source: Primary Analysis

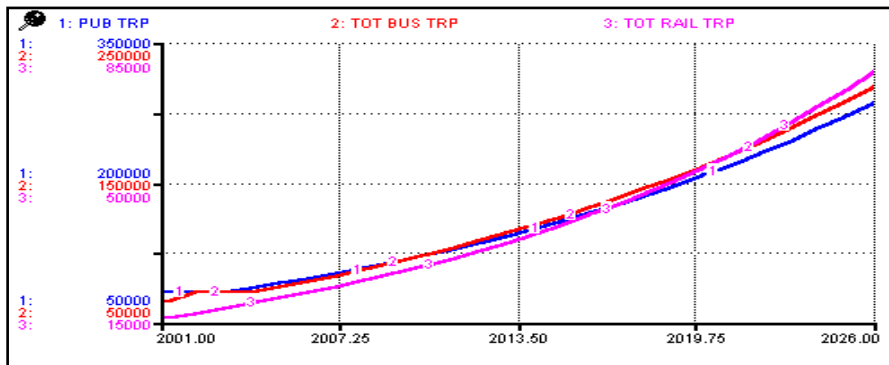


Figure 15 : Results of Transport Model – Simulation I

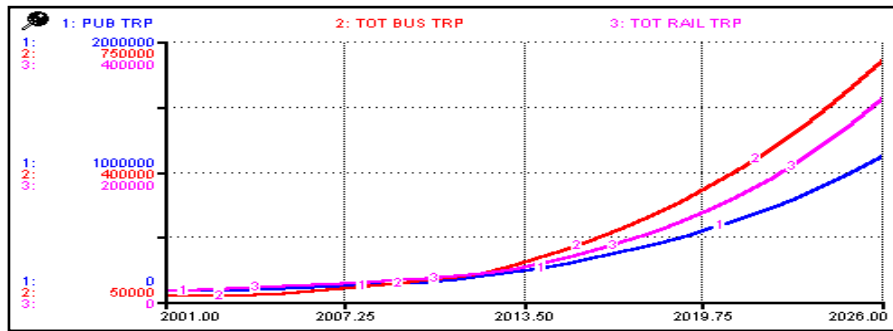


Figure 16 : Results of Transport Model – Simulation II

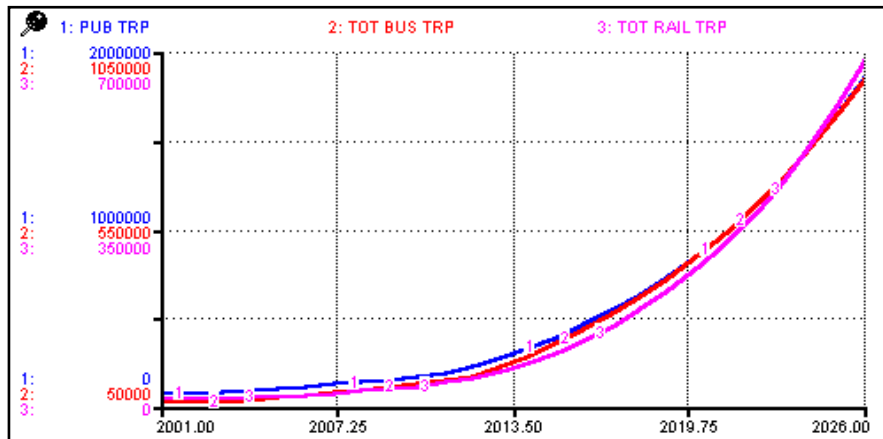


Figure 17 : Results of Transport Model – Simulation III

Hence among the three Simulations the last Simulation namely Simulation III reveals good share of rail transit trip to achieve sustainable development.

## XI. CONCLUSIONS

The following conclusions are drawn from this study based on the model analysis carried out in Northern suburban rail corridor:

- It is observed that maximum distance to reach nearby station is 1.00 km by walk and 2.50km by personalised and para transit modes.
- The analysis shows that there is an increase in ridership of suburban service due to the shift from bus and personalized modes if the rail transit system capacity is augmented.
- It is observed that by providing increased frequency, reduction in fare, Inter-modal transfer facilities, common ticket system, increasing accessibility and capacity; the number of rail transit users can be increased.
- Present development along the corridor does not increase patronage much because of scattered and unplanned developments which discourage the rail users. Hence, densification / TOD is proposed to attract more passengers along this corridor.

- The present design capacity of the northern suburban railway corridor is 285120 passengers per day. In design capacity, the utilized capacity was only 37 percent in minimum headway of 15 minutes. Hence, the corridor is highly under-utilized.

## XII. RESULTS OF SEGMENT I

- In segment I for simulation I, the increase of population is only 13,02,305 lakhs along the rail corridor. In simulation II, the increase of population is 21,73,690 lakhs, which is in the order of 1.67 times more than that of simulation I due to partial improvement and in simulation III, the population increase is more than 2.21 times than that of simulation I due to maximum improvement.
- In segment I, under simulation I, the density increases to 338 persons / ha., which is high. In simulation II, the density decreases to 282 persons per ha., and in Simulation III it is 280, which are acceptable.
- The rail transit share in simulation II is 2.89 times more than Simulation I in segment I, this is due to increasing the FSI and augmenting the rail transit operations partially, in the simulation analysis.
- The rail transit share is 6.08 times more in simulation III than Simulation I in segment I, due to not only

increasing the FSI but also augmenting the rail transit operations due to maximum improvement.

### XIII. RESULTS OF SEGMENT II

- In segment II, simulation I, the increase of population is only 11,18,141 lakhs along the rail corridor. In simulation II, the increase of population is 24,97,246 lakhs, which is in the order of 2.23 times more than that of simulation I due to partial improvement and . In simulation III, the population increase is more than 3.15 times than that if simulation I due to maximum improvement.
- The rail transit share in simulation II is 3.65 times more than Simulation I in segment II, due to not only increasing the FSI but also augmenting the rail transit operations partially.
- The rail transit share in simulation III is 8.12 times more than Simulation I in segment II, this is by increasing the FSI and augmenting the rail transit operations due to maximum improvement.
- In the simulation III, it is seen that by increasing the FSI, modal share, addition of new lines and switchover rate, the maximum capacity of suburban rail corridor could be utilized.
- Hence, the possibility of land use development in segment I needs densification and segment II area requires accelerated development and densification to enhance the patronage of the present suburban system with increase frequency and capacity, also addition of new rail line.

### XIV. RECOMMENDATIONS

- Population increase always increases the growth of public transport and personalized vehicles, but the present road system is beyond endurance. It emphasis the need for TOD along the corridor.
- TOD would enhance the Public Transport users and consequently discourage the personalised vehicle users for ensuring sustainable environment.
- Planned and orderly TOD development would also promote sustainable transport development.
- Allowing higher FSI from 1.50 to 4.00 along the study corridor would justify TOD.
- Providing incentives for developers to promote land use in the proposed stretch, or some sort of policy decisions are needed from Government side to attract the settlement of the people.

Since, rail transit has a number of advantages of its own namely, decrease in environmental pollution, saving travel time, minimized energy consumption, cost effective, it should be encouraged to its maximum extent to ensure standard of living and achieve sustainable transport developments in the long run.

### REFERENCES RÉFÉRENCES REFERENCIAS

1. Alain Bertaud (2004), 'Mumbai FSI conundrum: The perfect storm: the four factors restricting the construction of new floor space in Mumbai', Mumbai.
2. Arrington G.B. and Parsons Brinckerhoff (2004), 'Light Rail Transit and Transit Oriented Development', Transportation Research Circular E-C058: 9<sup>th</sup> National Light Rail Transit Conference.
3. Comprehensive Traffic and Transportation Study (CTTS) (1996), 'Madras Metropolitan Area', Chennai.
4. Kaushik Deb (2002), 'Restructuring urban public transport in India', Journal of Public Transportation, Florida, Vol. 5, No. 3.
5. Kumaravelu and Thirumurthy A. M. (2001), 'Dynamic land use Transport Model: A systems Approach', State of Art and scenario, Chennai.
6. Newman P.W.G. and Kenworthy J.R. (1996), 'The Land use – Transport connection – An overview', Land use policy, Pergamon Press, London, Vol. 13, No. 1.
7. Nithin Kumar K.K. (2001), 'Urban land use change detection of Chennai metro and suitability analysis using Remote Sensing and GIS integrated with AHP', Institute of Remote Sensing, Unpublished Thesis, Anna University, Chennai.
8. Radhikha K. (2005), 'A Study on the process of formation of Periurban settlements in CMA', Unpublished Thesis, Anna University, Chennai.
9. Railway (2002), 'Chennai Division Time Table', Southern Railway Press, No. 87, Chennai.
10. Rajat Rastogi and Krishna Rao K.V. (2003), 'Travel characteristics of commuters accessing transit: case study', Journal of Transportation Engineering, Vol. 126(6), pp. 684-694.
11. Sushma T. (2008), 'Rail Transit Oriented Land Use Development', Unpublished Thesis, Anna University, Chennai.
12. Taylor D. and Mahamassani II (1996), 'Analysis of stated preferences for inter modal bicycle transit interfaces', Transportation Research Record 1556, Transportation Research Board, Washington, D.C.
13. TCRP Report 16 (1996), ' Transit and Urban Form, Part III- A guide book for Practitioners', Transportation Research Council, Vol. 2.
14. TCRP Report 16 (2002), 'Transit and Urban Form, Part III- A guide book for Practitioners', Transportation Research Council, Vol. 2.
15. Umadevi G. (2001), 'Land Use transport Interaction Modeling: A systems Approach, Unpublished Doctoral Thesis, Anna University, Chennai.
16. Vinod Sibal and Yash Sachdeva (2001), 'Urban Transport Scenario in India and its linkages with Energy and Environment', Urban Transport Journal, Vol. 2, No. 1, pp. 34-55.