



Preliminary Investigation of Some Biological Aspects of Length-Weight Relationship and Condition Factor of Periwinkle (*Tympanotonus fuscatus*, Linnaeus 1758) from Okrika Estuary

By Oluniyi Solomon Ogunola, Olawale Ahmed Onada,
Augustine Eyiunmi Falaye & Dr Andreas Kunzmann

University of Bremen

Abstract- Assessment of length-weight relationship and condition factor of a commercially important mollusc species, Periwinkle, *Tympanotonus fuscatus*, from Okrika estuary was conducted from October, 2015 to February, 2016. A total of 120 samples of the species were hand-picked from the mangrove ecosystem of Okrika. The results obtained showed that the gastropod species had negative allometric growth patterns with a growth exponent, b value of 2.18. This value was confirmed as negative allometric, because it was significantly different ($p < 0.05$) from 3 when a t-test was carried out. The mean condition factor, K of the species was 18.9, which indicated that they were in good condition during the sampling period.

Keywords: length-weight relationship; condition factor; periwinkles; okrika estuary.

GJSFR-E Classification : FOR Code: 060205



Strictly as per the compliance and regulations of :



Preliminary Investigation of Some Biological Aspects of Length-Weight Relationship and Condition Factor of Periwinkle (*Tympanotonus fuscatus*, Linnaeus 1758) from Okrika Estuary

Running Title: Some aspects of ecology of Periwinkles

Oluniyi Solomon Ogunola ^α, Olawale Ahmed Onada ^σ, Augustine Eyiunmi Falaye ^ρ
& Dr Andreas Kunzmann ^ω

Abstract- Assessment of length-weight relationship and condition factor of a commercially important mollusc species, Periwinkle, *Tympanotonus fuscatus*, from Okrika estuary was conducted from October, 2015 to February, 2016. A total of 120 samples of the species were hand-picked from the mangrove ecosystem of Okrika. The results obtained showed that the gastropod species had negative allometric growth patterns with a growth exponent, b value of 2.18. This value was confirmed as negative allometric, because it was significantly different ($p < 0.05$) from 3 when a t-test was carried out. The mean condition factor, K of the species was 18.9, which indicated that they were in good condition during the sampling period.

This study recommends that further research needs to be conducted because it is the first of its kind in this estuary and that the sampling duration was one-third of a year (4 months). Also efforts should be taken to reduce the pollution load in order to safe-guard this valuable resource for the local population.

Keywords: length-weight relationship; condition factor; periwinkles; okrika estuary.

I. INTRODUCTION

Periwinkle (*Tympanotonus fuscatus*, Linnaeus 1758) is a univalve, prosobranch gastropod (Mollusca) commonly found in the intertidal zone of brackish ecosystems in the Niger-Delta and other parts of West African coastal waters such as mangrove swamps, creeks, lagoons, estuaries (Nickles, 1950; Dambo, 1993; Jamabo *et al.*, 2009; Moruf and Lawal-Are, 2015). They usually inhabit soft substratum or mudflats rich in decaying organic matter and detritus (Jamabo and Chinda, 2010; Iboh *et al.*, 2015). Deekae (1987) reported that nature of bottom deposit, water depth and current are the major factors controlling the distribution of this

shellfish in the estuaries. When in their habitat, they migrate to the coastal edge and usually aggregate under the breathing roots of mangrove plant species such as *Avicennianitida*, *Rhizophora mangle* and *Nypa palm* for protection from the direct heat of sun (Cariton and Cohen, 2002). They have the ability to survive without water or wetting for a long period time especially during dry season but rely on their food reserve (Oyenekan, 1979). They provide a livelihood and nutrition for vast majority of people and have been important marine resources targeted worldwide. They constitute a major food item or delicacy of large number of people living in the Niger-Delta (Jamabo and Chinda, 2010). Millions of *T.fuscatus* are transported in jute bags on a daily basis to the markets for sale. It is a relatively cheap source of animal protein and its shell is commonly used as source of calcium and phosphate in livestock feed and as ornaments (Jamabo *et al.*, 2009; Akwari and Archibong, 2011; Bob-Manuel, 2012). This species also has some medicinal values. For instance, because of its high iodine content, it has been used for the treatment of endemic goitre (Bob-Manuel, 2012).

No effort has been made to culture this species in captivity, therefore harvest from the wild has mounted high pressure and impact on its abundance, large-size and community structure (Powell *et al.*, 1985; FAO/FIDI, 1994).

Length-Weight relationship (LWR) indicates the average weight of fish at a given length by making use of amathematical equation to show relationships between the two (Beyer, 1987). Fish can attain either isometric or allometric growth (Gayaniilo and Pauly, 1997; Sakar *et al.*, 2013). Isometric growth indicates that both length and weight of the shellfish are increasing at the same rate. Allometric growth can either be positive or negative. Positive allometric implies that the shellfish becomes stouter or deeper-bodied as its length increases. Negative allometric implies the shellfish becomes slender as its length increases.

Author α: International Studies in Aquatic Tropical Ecology, University of Bremen, Germany. e-mail: solomonunilag@yahoo.com

Author σ: Aquaculture and Fisheries Management, University of Ibadan, Nigeria. e-mail: onadaolawale@gmail.com

Author ρ: Aquaculture and Fisheries Management, University of Ibadan, Nigeria. e-mail: aefalaye@yahoo.com

Author ω: Centre for Marine Tropical Ecology, Bremen, Germany.

Condition Factor (CF) is an estimation of general well-being of fish (Oribhabor *et al.*, 2011) and is based on the hypothesis or assumption that heavier fish (at a given length) are in better condition than the lighter ones (Bagenal and Tesch, 1978; Ogamba *et al.*, 2014). The condition factor of 1.0 or greater indicates the good condition of fish while less than 1.0 shows bad condition (Abobi, 2015). The condition factor can be influenced by season, sex, type of food organism consumed by fish, age of fish, amount of fat reserved and environmental conditions (Bagenal and Tesch, 1978; Anene, 2005; Abowei, 2009).

Length-Weight relationship and Condition Factor are important tools in fisheries biology, management and stock assessment to support data about standing stock biomass, their well-being, compare ontogeny of fish population and growth pattern studies of fish from different regions, understand their life cycles and span, construct ecosystem modelling and can be used as index to assess the status of the aquatic environment where the fish live (Le Cren, 1951; Beyer, 1987; Bolger and Connoly, 1989; Patrakis and Stergiou, 1995; Montopoulos and Stergiou, 2002; Mendes *et al.*, 2004; Anene, 2005; Fafioye and Oluajo, 2005; Imam *et al.*, 2010; Lawson *et al.*, 2013; Ogamba *et al.*, 2014).

Few studies have been conducted on the length-weight relationship and condition factor of periwinkles in some parts of the Niger-delta (Jamabo, 2007; Jamabo and Chinda, 2010; Udoh, 2013; Iboh *et al.*, 2015). Niger-Delta is the crude-oil reservoir of Nigeria and all aspects of the industrial activities, from exploration, production to waste discharge, have adverse effects on the ecosystems (Uzoma and Mgbemena, 2015). The impact of environmental damage in the region cannot be quantified (Baghebo *et al.*, 2012).

There is no published research on some of the aspects of the biology of periwinkle (*T.fuscatus*) in the highly polluted, environmental-unfriendly Okrika estuary. This study is therefore aimed at providing first hand and baseline information on the aspects of the ecology (length-weight relationship and condition factor) of this species in the Okrika estuary.

II. MATERIALS AND METHODS

a) Description of the Study Area

The study area (Figure 1) lies between latitudes 4° 44' 00" to 4° 46' 10" N and longitudes 7° 5' 15" to 7° 6' 15" with an area of 905.2sq.km. It is located in Okrika Local Government Area of Rivers State with a population of over 150,000 (NPC, 2006). *Okrika estuary* has an average length of 21km and lies in the north bank of the Bonny River with a distance of about 56km from the Bight of Benin in Eastern part of the Niger-Delta. It is a mangrove environment characterised by regular salt water inundation as a result of tidal action and flooding

and extensive sandy bottom and mud-flat. The tidal amplitude ranges between 1.5-2m in normal tide. It originates from Marine Base and runs through *Okari* and crosses the Mainland to *Ekerekana Ama* and other creeks such as *Sandfilled/Mainland Bridge (Ogoloma)*. It is characterized by tropical climate with alternating wet (March to October) and dry (November to February) seasons. Based on the Nigerian Meteorological (NIMET) data, the area is associated with warm temperature ranging from 26° to 34°C, annual bimodal rainfall of 2300-4000 cubic metres and distinct relative humidity and evaporation. It is ecologically endowed with vast biodiversity; fish, mollusc, crustaceans, crabs, *Rhizophora mangle*, *Laguncularia racemosa*, *Avicennia africana*.

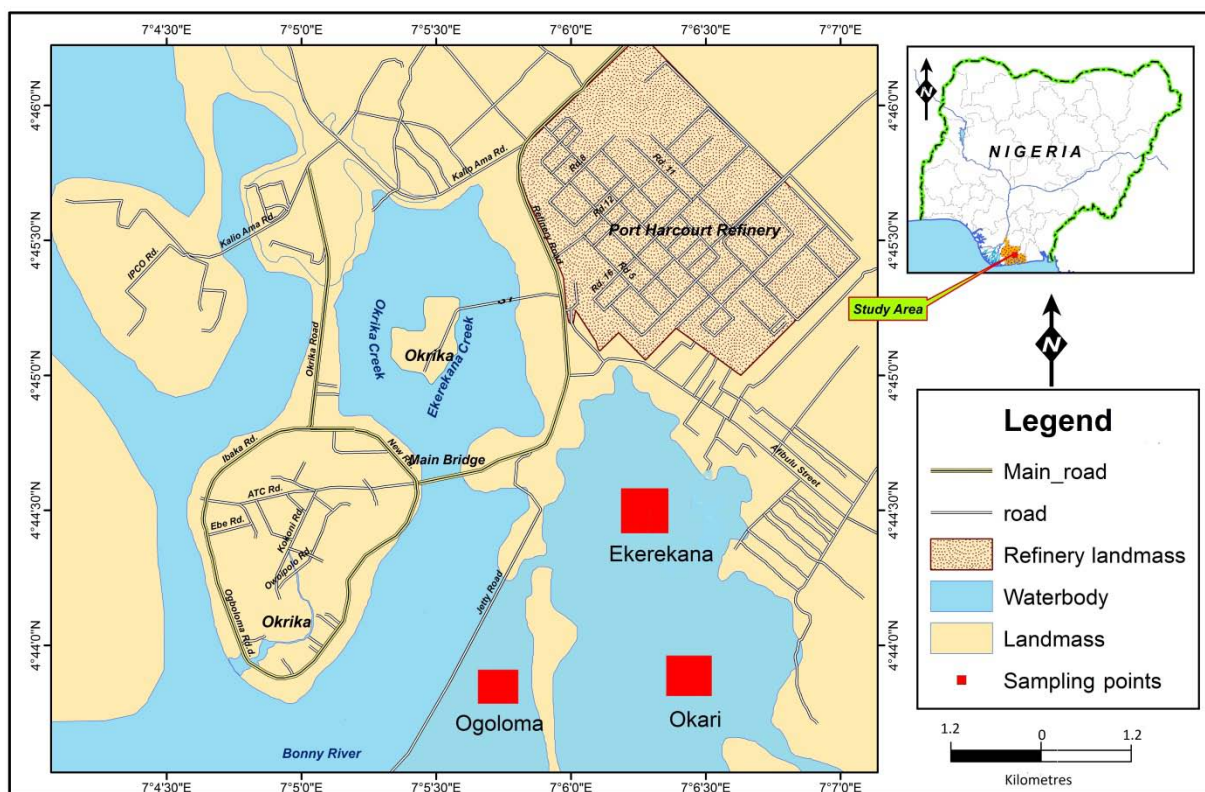


Figure 1: Map of Okrika estuary showing the sampling stations

b) *Experimental Design*

Three experimental sampling sites along the estuary course were utilized for data collection. Each site is about 1 - 2km from the other. The respective sampling sites were represented as *Ekerekana (EKR)*, *Okari (OKR)* and *Ogoloma (OGL)*. These sites were chosen because *T.fuscatus* are mostly found and aggregated in these sections of the mangrove ecosystem and also their proximity to the refinery discharge point and in addition to other activities such as domestic waste and sewage disposal, oil-bunkering and transportation carried out along its course and also due to their abundance, availability, economic importance, mostly eaten by the populace (market survey), feeding habits and prevailing environmental conditions. Sampling was done in October/November, 2015 and January/February, 2016 which represent the peak of both the wet and dry seasons respectively.

$$\text{Shell-fish} = 3 \text{ Sites} * 20 \text{ Replicates} * 2 \text{ Seasons} = 120 \text{ Samples}$$

c) *Periwinkle collection, Preservation and Identification*

The periwinkle samples were hand-picked randomly from each sampling site at low or ebb tide. Sampling was done in accordance with the techniques used by other published literatures (Jamabo *et al.*, 2009; Moruf and Lawal-Are, 2015). All samples collected were placed in polythene bags. They were transported to the laboratory on ice in a cold chest and washed off mud on getting there. In the laboratory, they were identified to

the species level using the fish catalogue of FAO (Fischer *et al.*, 1981; FAO, 1990; Schneider, 1990). Their morphometrics of shell total length (STL) and weight (BWt) were measured using a graduated plastic measuring board and a sensitive scale balance (Kern 440-35A model) (Moruf and Lawal-Are, 2015). All lengths and weights were measured in centimetres and grams respectively. The data gathered were used to evaluate the relationship between the shell total length (STL) and weight (BWt) of *T.fuscatus*.

III. DATA ANALYSIS

a) *Length-Weight Relationship (LWR)*

The raw data of shell total lengths (STL) and weights (BWt) of the periwinkles collected were used to compute the length-weight relationship with the formula;

$$W = aL^b \dots\dots\dots (1)$$

(Le Cren, 1951; Ricker, 1973)

where W = body weight, L = total length, a = intercept on the length axis, b = slope or regression coefficient which usually ranges from 2 to 4.

Equation (1) is log transformed to give a linear relationship;

$$\text{Log } W = \text{Log } a + b \text{ Log } L \dots\dots\dots (2)$$

(Le Cren, 1951; Parson, 1988)

When Log W is plotted against Log L, the regression coefficient or growth exponent, b, and intercept, a are obtained.

For each species, the growth exponent (b) was compared to 3 using student's t-test to ascertain whether species grow isometrically or not (Sokal and Rohlf, 1987). This was achieved by using the formula;

$$t_s = b - 3 / s_b \dots\dots\dots$$

(Zar, 1984; Morey *et al.*, 2003)

t_s = student's t-test, b = slope, s_b = standard error of the slope.

IV. CONDITION FACTOR

This was computed for each species with Fulton's equation;

$$K = 100 \times W/L^b \dots\dots\dots$$

(Ricker, 1971; Pauly, 1983)

where K = condition factor, W = body weight, L = total length

V. STATISTICAL ANALYSIS

The data obtained from the morphometric analysis were subjected to statistical analysis using R-Studio Version 0.98.1083 (2009-2014) and Excel version. Analysis of variance (ANOVA) was used to test whether the calculated regression line was significant (Ogbeibu *et al.*, 2005). All statistical analyses were considered at significant level of 5% ($p < 0.05$).

VI. RESULTS

a) Length-weight relationship

A total of 120 samples of *T.fuscatus* were measured for their morpho-metrics from October 2015 to February 2016. The shell total lengths (STL) and weights (BWT) ranged from 2.5 – 4.8cm (mean of 3.27 ± 0.29) and 1.16 – 5.87g (mean of 2.54 ± 0.57), respectively.

The length-weight relationship was determined using logarithmic transformation. The linear relationship of the log-weight and log-length is shown as;

$$\text{Log BWt} = -1.67 + 2.18 \text{ Log STL} \dots\dots$$

(Table 1)

The intercept, a, was negative and the growth exponent, b (2.18), when compared with 3 using t-test showed that there was a significant difference (p -value < 0.00001) confirming the growth pattern of *T.fuscatus* to be negative allometric.

The relationship between shell total length and weight showed a highly significant positive correlation, $r = 0.81$, $p < 0.001$. The scatter plot or regression graph of the shell total length and weight relationship of the species is shown in Figure 2. This reflects the exponential growth in weight with increasing length. The statistics of the regression is shown in Table 1.

b) Condition Factor (K)

The mean K value of *T.fuscatus* for the sampling period in the study area was found to be 18.9 (Table 1).

Table 1: Morphometrics, Length-weight relationship and Condition Factor of *Tympanotonus fuscatus* from the study area

Species	Mean STL (cm)	Mean BWT (g)	a	b	Type of growth	r	p-value of r	Mean K	t-value
<i>Tympanotonus fuscatus</i>	3.27 ± 0.29	2.54 ± 0.57	-1.67	2.18	-A	0.81	$2.2 \times 10^{-16} \dots$	18.9	8.542

BWt = shell or body weight, STL = shell total length, a = intercept of the regression, b = slope of the regression (growth exponent), -A = negative allometric growth, r = correlation coefficient of length weight relationship, p-value of r = significance of correlation, K= Condition Factor, t-value = absolute value of t-test parameter to compare calculated slope to 3. *** $p < 0.001$

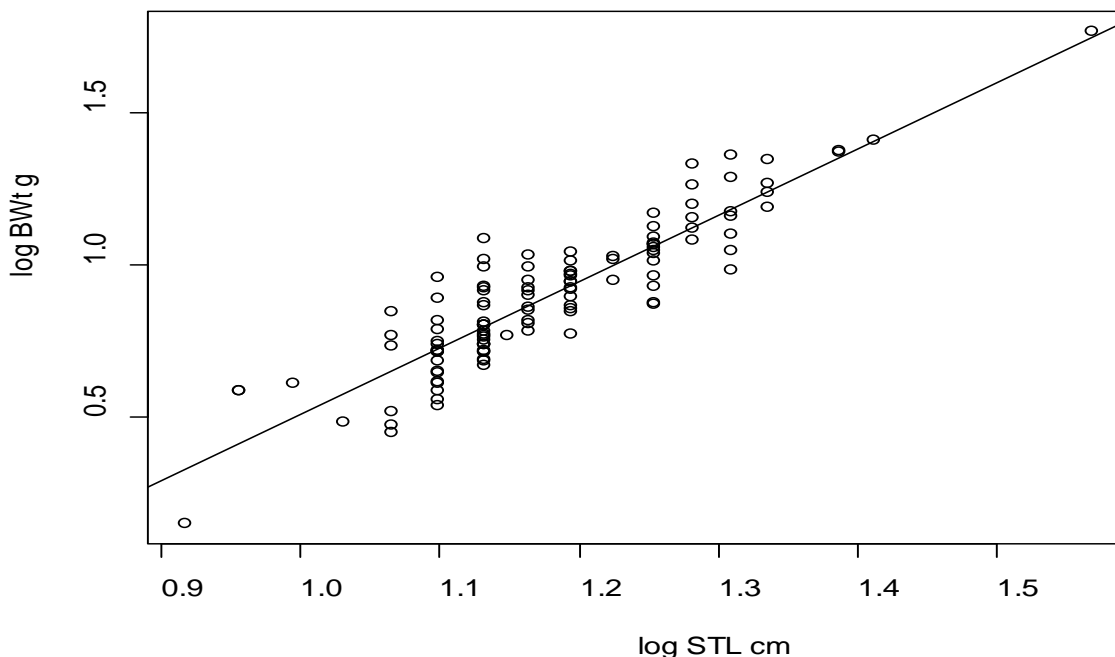


Figure 2: Length-weight relationship of *T. fuscatus*

VII. DISCUSSION

The correlation coefficient ($r = 0.81$) for length-weight relationship (LWR) was high for *T.fuscatus* which indicates a strong correlation and allows a fair prediction of weight for a given length. This agrees with earlier studies involving the same species from different parts of Niger-Delta (Jamabo *et al.*, 2009; Udoh, 2013). The value for growth exponent, b , obtained for the species is within the limit or range of 2 and 4 reported for most shell-fish (Tesch, 1971). The growth pattern of *T.fuscatus* was found to be negative allometric ($b = 2.18$), which indicates that the mollusc increases in weight faster than the length (Jamabo *et al.*, 2009). This finding agrees with Gabriel (1981), Jamabo *et al* (2009), Udoh (2013) and Moruf and Lawal-Are (2015), who reported the same growth pattern for this species in the Port-Harcourt area, Bonny and Cross River Estuaries (Niger-Delta) and Lagos Lagoon.

The high mean K value of 18.9 shows that the species samples were in favourable conditions although the creek receives refinery effluents in large amounts on a daily basis, but this could have been flushed out from the basin during high tide (Gunster *et al.*, 1993). Essienet *al* (2013) also reported a better healthy status (K) of range, 24.7-54.7, for this species investigated in oil polluted Qua-Iboe Estuary, Niger-Delta. High mean K values of 8.0 and 16.1 were also obtained for this species in Lagos Lagoon, but contradict the low K value < 1 reported by Udoh (2013) in the Cross River estuary. This mean K value could have been influenced by food

abundance and availability, foraging behaviour of this species, dependence on reserved or stored food energy and favourable environmental conditions such as salinity, temperature (Incze *et al.*, 1980; Brown and Hartwick, 1988; Moruf and Lawal-Are, 2015). As they are filter feeders, high phytoplankton levels could strongly influence their growth rates and final sizes. The high K value could also be explained probably because they were sampled when they were not breeding. This statement contradicts Egonmwan and Odiete(1983) and Ajao and Fagade(1990), who reported that their spawning, oviposition and early embryonic development are restricted to the beginning of the dry season months from November to January. During this period, their condition factor is expected to drop as they are spawning or breeding. This good healthy condition could also be attributed to their ability to tolerate and adapt to highly variable contaminated, environmental vagaries due to their genetic make-up as a molluscan (Mallet and Haley, 1983) and developing a regulatory mechanism for the toxicants by binding them to metallothioneins, converting it to non-toxic, soluble and excretory form (Viarengo and Nott, 1993; Viarengo *et al.*, 1999; Rainbow, 2002; Choi *et al.*, 2008). Banci *et al* (2017) explained that increased mutation rate of aquatic biota by toxic compounds like heavy metals can lead to high genetic variation and adaptability of fauna in locations with high quantities of such pollutants. In addition, the mollusc could also retract into shell which provides valuable protection for the tissues from environmental stress of pollution.

VIII. CONCLUSIONS AND RECOMMENDATION

This study provided information on the biology (LWR and condition factor) of a commercially important mollusc, *Tympanotonus fuscatus*, in Okrika creeks which is the first documented report of its kind and would serve as a reference point for future research.

The findings of this study suggest that the condition of the estuary is favourable to the mollusc in terms of availability and abundance of food resources. In addition, they might have developed a strategy to cope and adapt to an environment that receives effluents from a nearby crude oil refining company. Waste effluents disposed into these creeks are flushed out during high tides creating a favourable environment for the species investigated at least during part time. Further studies need to be carried out because sampling duration (4 months) might be too small to justify and make concrete conclusions.

The brackish ecosystem of Okrika creeks produces a valuable shellfish species for the local population. Therefore, measures must be taken to reduce the pollution impact on the aquatic ecosystem.

IX. ACKNOWLEDGEMENTS

The author would like to appreciate *Deutscher Akademischer Austauschdienst* (DAAD), with code number 91534748 and Desk 431, for full scholarship and financial support during the two years of my ISATEC MSc course at ZMT/University of Bremen, Germany.

Conflict of Interest

The authors declare that they have no competing interests among themselves.

REFERENCES RÉFÉRENCES REFERENCIAS

1. Abobi, S.M., 2015. Weight-Length Models and Relative Condition Factors of Nine (9) freshwater fish species from the Yapei Stretch of the White Volta, Ghana. *Elixir Appl. Zoology* **79**: 30427-30431.
2. Abowei, J.F.N., 2009. The Morphology, Abundance, Condition Factor and Length-weight Relationship of *Ethmalosafimbriata* (Bowditch 1825) from Nkoro River Niger Delta, Nigeria. *Advanced Journal of Food Science and Technology*, 1(1):51-56.
3. Anene, A., 2005. Condition factor of four chichlid species of a man-made lake in Imo state, south-eastern Nigeria. *Turkish J. Fisheries and Aquatic Sciences*, **5**:43-47.
4. Ajao, E.A. and Fagade, S.O., 1990. Production and population dynamics of *Parchymelanaaurita* MULLER *Arch, Hydrobiol.* **120** (1): 97-109.
5. Asunkkwari, A.A. and Archibong, A.A., 2011. The effect of crude extracts of periwinkle on some electrolytes and haematological parameters of water Albino rats. M.Sc Thesis.
6. Bagenal, T.B. and F.W. Tesch, 1978. Methods for the assessment of fish production in fresh waters: Age and growth. Oxford, Blackwell Scientific Publication, London. 101-136p.
7. Baghebo, M., Samuel, U.P. and Nwagbara, E.N., 2012. Environmental damage caused by the activities of multinational oil giants in the Niger Delta region of Nigeria. *IOSR Journal of Humanities and Social Science (JHSS)*, Vol. **5**, 09-13.
8. Banci, K.R.S., Mori, G.M., Oliveira, M.A., Paganelli, F.L., Pereira, M.R. and Pinheiro, M.A.A., 2017. Can environmental pollution by metals change genetic diversity? *Ucidescordatus* (Linnaeus, 1763) as a study case in Southern Brazilian mangroves. *Mar. Poll. Bull.* (Article in Press).
9. Beyer, J. E., 1987. On length-weight relationship computing the mean weight of the fish of a given length class. *Fish bytes*, **5** (10):11-13.
10. Bob-Manuel, F.G., 2012. A preliminary *Tympanotonus fuscatus* (Lineaus, 1758) and *Parchymelaniaaurita* (Muller) at the Rumuolumeni mangrove swamp creek, Niger Delta Nigeria. *Agricul. and Biol. J. of North America*, 265-270p.
11. Bolger, T. and Connoly, P. L., 1989. The selection indices for the measurement and analysis of fish condition. *J. Fish Biol.*, **17**(3): 1-182.
12. Brown, J.R. and Hartwick, E.B., 1988. Influences of temperature, salinity and available food upon suspended culture of the pacific oysters, *Crassostreagigas*, I. Absolute and Allometric Growth. *Aquaculture*, **70**, 231-251.
13. Cariton, J.T. and Cohen, A.N. 2002. Periwinkle's progress: the Atlantic snail *Littorinasaxatilis* (Mollusca: gastropoda) establishes a colony on pacific shores. *Veriger* **41** (4): 333-338.
14. Choi, Y.K., Jo, P.G. and Choi, C.Y., 2008. Cadmium affects the expression of heat shock protein 90 and metallothionein mRNA in the Pacific oyster, *Crassostreagigas*. *Comp. Biochem. Physiol. Part C* **147**, 286-292.
15. Dambo, W.B., 1993. Tolerance of the Periwinkle *P. aurita* and *T. fuscatus* to refined oils. *Environ. Pollution* **79**:293-296.
16. Deekae, S.N., 1987. The ecological distribution of mangrove molluscs in the Bonny-New Calabar Riversystem of Niger Delta. M.Sc Thesis, University of Port Harcourt, Choba. 158p.
17. Egonmwan, R. and Odiete, W.O., 1983. The seasonal gonadal changes, spawning and early development of *Tympanotonus fuscatus* var *radula* I. (*Prosobranchia, potamididae*). *J. moll. Stud. Suppl.* **12A**, 43-46.
18. Essien, J., Udofia, G., Inam, E. And Kim, K-W., 2013. Condition factor, hydrocarbons and bacterial

- burdens of shellfishes from mudflats in the Qua-Iboe Estuary, Nigeria. *J. Geosystem Eng.* 16 (2):156-164.
19. Fafioye, O.O. and Oluajo, O.A., 2005. Length-weight relationships of five fish species in Epe Lagoon, Nigeria. *African J. Biotechnology*, 4(7):749-751.
 20. Fischer, W., Bianchi, G., Scott, W. B., 1981. FAO species identification sheets for fishery area. Canada found in trust Ottawa, Canada by arrangement with FAO. 7, 34-47.
 21. Food and Agricultural Organization (FAO) 1990. Field guide to commercial marine resources of the Gulf of Guinea. FAO/UN Rome (Italy), 265pp.
 22. Food and Agricultural Organization/FIDI, 1994. World Aquaculture production 1986-1997. Fisheries circular NO.815 (Review 6), FAO, Rome.
 23. Gabriel, C., 1981. The ecology and growth of *Tympanotonus fuscatus* var *radula* in Port Harcourt Area. M.Sc. Thesis in hydrobiology and fisheries biology, University of Port Harcourt., 91p.
 24. Gayanilo, F.C and Pauly, D., 1997. FAO ICLARM stock assessment tools (FISAT): References manual, FAO Computerized information series (Fisheries) (8): 262.
 25. Gunster, D.G., Gillis, C.A., Bonnevie, N.L., Abel, T.B. and Wenning, R.J., 1993. Petroleum and hazardous chemical spills in Newark Bay, New Jersey, USA from 1982-19991. *Envtal. Poll.* **82**, 245-253.
 26. Iboh, C.I., Ajang, R.O. and Ekor, S.C., 2015. Population Estimation of Periwinkles *Tympanotonus Fuscatus* and *Parchymelania Aurita* at Esuk Mba Mangrove Swamp along Cross River Estuary. *Journal of Natural Sciences Research*, Vol.5 (1): 58-62.
 27. Imam, T.S. 2010. Aspects of ecology and biomonitoring of heavy metals associated with industrial pollution in Bompai-Jakara catchment basin, Kano state, Nigeria. A PhD Progress seminar paper presented at Biological Sciences Department, Bayero University Kano, 24th, February.
 28. Incze, L.S., Lutz, R.A. and Watling, L., 1980. Relationships between effects of environmental temperature and seston on growth and mortality of *Mytilus edulis* in a temperate northern estuary. *Mar. Biol.*, 57, 147-156.
 29. Jamabo, N.A., 2007. Ecology of *Tympanotonus fuscatus* var *fuscatus* (Linnaeus, 1758) in the mangrove swamps of the upper Bonny River, Niger Delta, Nigeria. PhD Thesis in Aquaculture, Rivers State University of Science and Technology Port Harcourt. 231p.
 30. Jamabo, N.A., Alfred-Ockiya, J.F. and Chinda, A. C., 2009. Growth, mortality and recruitment Studies of Periwinkle, *Tympanotonus fuscatus* var *radula* (Linnaeus, 1758) in the Bonny River, Niger Delta, Nigeria. *Environment and Ecology*. 27(4A):160-167.
 31. Jamabo, N.A., Chindah, A.C. and Alfred-Ockiya, 2009. Length-Weight Relationship of a Mangrove Prosobranch *Tympanotonus fuscatus* var *fuscatus* (Linnaeus, 1758) from the Bonny Estuary, Niger Delta, Nigeria. *World Journal of Agricultural Sciences* 5 (4): 384-388.
 32. Jamabo, N.A. and Chinda, A., 2010. Aspects of the Ecology of *Tympanotonus fuscatus* var *radula* (Linnaeus, 1758) in the Mangrove Swamps of the Upper Bonny River, Niger Delta, Nigeria. *Current Research Journal of Biological Sciences*. 2(1):42-47.
 33. Lawson, E.O, Akintola, S.L and Awe, F.A. 2013. Length-weight relationships and morphometry for eleven (11) fish species from Ogudu Creek, Lagos, Nigeria. *Advances in Biological Research* 7(4): 122-128.
 34. Le Cren, E. D., 1951. The length-weight relationship and seasonal cycle in gonad weight and condition in the perch (*Perca fluviatilis*). *Journal of Animal Ecology*, 20: 201-209.
 35. Mallet, A.L. and Haley, L.E., 1983. Growth rate and survival in pure population matings and crosses of the oyster *Crassostrea virginica*. *Can. J. Fish. Aquat. Sci.*, 40, 948-954.
 36. Mendes, B., Fonseca, P. and Campos, A., 2004. Weight-length relationships for 46 fish species of the Portuguese west coast. *J. Appl. Ichthyol* 20:355-361.
 37. Morey, G., Morantai, J., Massut, E., Grau, A., Linde, M., Riera, F. and Morales, N. B., 2003. Weight-length relationships of littoral to lower slope fishes from the western Mediterranean, *Fisheries Research*, 62: 89-96.
 38. Moruf, R.O. and Lawal-Are, A.O., 2015. Growth Pattern, Whorl and Girth Relationship of the Periwinkle, *Tympanotonus fuscatus* var *radula* (Linnaeus, 1758) from a Tropical Estuarine Lagoon, Lagos, Nigeria. *International Journal of Fisheries and Aquatic Studies*. 3(1): 111-115.
 39. Moutopoulos, D.K. and Stergiou, K.I., 2002. Length-weight and length-length relationships of fish species from Aegean Sea (Greece). *J. Appl. Ichthyol.*, 18: 200-203.
 40. National Population Commission of Nigeria (NPC) 2006. National and State Population and Housing Table; 2006 Census priority Tables (Volume 1).
 41. Nickles, M., 1950. Mollusquetestaces marine de la cote occidenteied' atrique. *Manuals Quests Africains* 2: 1-269.
 42. Ogamba, E.N, Abowei, J.F.N. and Onugu, A., 2014. Length-weight relationship and condition factor of selected finfish species from Odi River, Niger Delta, Nigeria. *Journal of Aquatic Science* 29(1A):1-12.
 43. Ogbeibu, A.E., 2005. Biostatistics-A practical approach to research and data handling. Minder Publishing Company Ltd, Benin City, Nigeria.

44. Oribhabor B. J, Ogbeigbu, A. E and Udo, M. T., 2011. The Length-Weight Relationship of Brackish Water/Marine Fish Species Assemblage In Niger Delta Mangrove Creek, Nigeria. *Current Research Journal of Biological Science* 3(6): 616-621.
45. Oyenekan, J.A., 1979. The Ecology of the genus *Parchymelania* in Lagos Lagoon, *Arch. Hydrobiol.* 86 (4): 515-522.
46. Parson, R., 1988. Statistical analysis- A decision making approach. Second edition. Harper and Row publishers, New York, 791p.
47. Pauly, D., 1983. Some simple methods for the assessment of tropical fish stocks. FAO. Fisheries Techn. Pap.(234) FAO, Rome.
48. Petrakis, G. and Stergiou, K. I., 1995. Weight-length relationships for 33 fish species in Greek waters. *Fisheries Research*, 21:4 65-469.
49. Powell, C.B., Hart, I. and Deekae, S.N., 1985. Market survey of the periwinkle *Tympanotonus fuscatus* in Rivers State. Sizes, prices, trade routes and exploitation levels. In proceedings of the 4th annual conference of the fisheries society of Nigeria (FISON).Ita, E.O., Ajayi, T.O., Ezenwa, B., Olaniawo, A.A., Udolisa, R.E.K. and Tagget, P. A (Eds.),55-61.
50. Rainbow, P.S., 2002. Trace metal concentrations in aquatic invertebrates: why and so what? *Environ. Polltn.*120: 497-507.
51. Ricker, W.F., 1971. Methods of assessment of fish production in fresh waters, Edn 2.Blackwell Scientific Publishers, Oxford, London, 1971.
52. Ricker, W.E., 1973. Linear regressions in fisheries research. *J. Fish. Res. Board Can.* 30: 409-434.
53. Sakar, U. K., Khan, G. E., Dabas. A., Palhak, A. K., Mir, J. I., Rebello, J. C., Pal, A. and Singh, S. P., 2013. Length-Weight Relationship and Condition Factor of Selected Freshwater Fish Species found in River Ganga, Gomti and Rapti. *India Journal of Environmental Biology*, 23:123-132.
54. Schneider, W., 1990. FAO species identification sheets for fishery purpose field-guide to the commercial marine resources of the Gulf of Guinea. Food and Agricultural Organization of the United Nations, Rome.
55. Sokal, R.R. and Rohlf, F.J., 1987. Introduction to Bio-statistics. 2nd Edition, New York, USA: Freeman.
56. Udo, P.J., 2013. Length -Weight / Girth Relationship and Condition Factor of the Periwinkle *Tympanotonus fuscatus* (Cerithidae: Gastropoda) of the Cross River, Nigeria. *International Journal of Fisheries and Aquatic Studies*.1:26-28.
57. Uzoma, A. and Mgbemena, O.O., 2015. Evaluation of some oil companies in the Niger Delta region of Nigeria: an environmental impact approach. *International Journal of Environment and Pollution Research*.Vol.3, No.2, 13-31.
58. Viarengo, A. and Nott, J.A., 1993. Mechanisms of heavy metal cation homeostasis in marine invertebrates. *J. Comparative of Biochem. and Physiol.*104C: 355-372.
59. Viarengo, A., Burlando, B., Cavaletto, M., Marchi, B., Ponzano, E. and Blasco, J., 1999. Role of metallothionein against oxidative stress in the mussel *Mytilus galloprovincialis*. *Am. J. Physiol.* 277, 1612-1619.
60. Zar, J.H., 1984. Biostatistical analysis. Prentice Hall, New Jersey. 718p