



GLOBAL JOURNAL OF SCIENCE FRONTIER RESEARCH: A
PHYSICS AND SPACE SCIENCE
Volume 21 Issue 5 Version 1.0 Year 2021
Type: Double Blind Peer Reviewed International Research Journal
Publisher: Global Journals
Online ISSN: 2249-4626 & Print ISSN: 0975-5896

Torus-Shaped EMFS with Quantum Energy Levels – How Common are they?

By Maria Kuman

Holistic Research Institute

Abstract- According to the nonequilibrium theory of Prigogine, the tri-dimensional attractor has the shape of a torus (donut). If so, it shouldn't be surprising that the Sun, the Earth, the Man, helium nanodroplets, and even elementary particles have the same torus-shaped nonlinear electromagnetic fields (NEMF). This article aims to show that not only are the shapes of all electromagnetic fields the same, they have the same dynamic, and quantum levels are specific for all of them. Helium nanodroplets were found to have a donut shape bulged at the equator and exhibiting turbulence in the equatorial area observed as a chain of alternating vortices (sucking energy in) and anti-vortices (throwing energy out). Bulging at the equator and turbulence meant that the droplets were spinning fast. When studied with Bragg scattering, the observed peaks indicate specific energy transfers $h\nu_{ij}$ between discrete states, which means discrete quantum energy levels were present when turbulence was present.

Keywords: physics, bragg scattering, helium nanodroplets, turbulence, human quantum energy levels, kirlian photos of NEMF.

GJSFR-A Classification: FOR Code: 020699



Strictly as per the compliance and regulations of:



Torus-Shape NEMF with Quantum Energy Levels – How Common are they?

Maria Kuman

Abstract- According to the nonequilibrium theory of Prigogine, the tri-dimensional attractor has the shape of a torus (donut). If so, it shouldn't be surprising that the Sun, the Earth, the Man, helium nanodroplets, and even elementary particles have the same torus-shaped nonlinear electromagnetic fields (NEMF). This article aims to show that not only are the shapes of all electromagnetic fields the same, they have the same dynamic, and quantum levels are specific for all of them. Helium nanodroplets were found to have a donut shape bulged at the equator and exhibiting turbulence in the equatorial area observed as a chain of alternating vortices (sucking energy in) and anti-vortices (throwing energy out). Bulging at the equator and turbulence meant that the droplets were spinning fast. When studied with Bragg scattering, the observed peaks indicate specific energy transfers $h\nu_{ij}$ between discrete states, which means discrete quantum energy levels were present when turbulence was present. It seems that quantum energy levels are specific for all spinning systems exhibiting turbulence: starting with the elementary particles, which emit and suck back virtual photons from their equatorial area, and finishing with the Sun, which emits spinning plasma balls from anti-vortices in its equatorial area, which after a loop trajectory are sucked back by nearby vortices. Measurements of the human NEMF showed that it is also donut-shaped, has the same dynamic, and its energy levels are discrete, just like the atoms of which our material body consists.

Keywords: physics, bragg scattering, helium nanodroplets, turbulence, human quantum energy levels, kirlian photos of NEMF.

I. WHAT CAN WE LEARN FROM THE RESEARCH ON HELIUM NANODROPLETS?

In the November's journal of Physics Today, 2014, on p. 16, Ashley Smart wrote the article *Quantized Vortices in a Nanodroplet* [1]. In it she describes the unusual behavior observed in super-fluid fast-spinning helium nanodroplets at temperatures close to the absolute zero.

The marked circles on Fig. 1a present the peaks of neutron scattering from helium nanodroplets, which is a sign of quantum behavior. Analysis showed that at this state the droplets were donut shaped and they were bulged at the equator, which resulted from fast spinning around axis passing through the hole of the torus. The increased spinning brought increased turbulence in the equatorial area manifested with a chain of alternating vortices and anti-vortices, which exhibited

quantum behavior, and led to the observed peaks of neutron scattering.

However, the state on Fig. 1a alternated with the state on Fig. 1b, in which neutron scattering was not observed. The missing Bragg's peaks mean that there were no vortices and anti-vortices. X-ray diffraction showed (Fig.1b) that the droplets in state b were elongated toward the magnetic poles of the torus, which are at both ends of the axis of spinning, and can be seen by the more spaced diffraction lines at the poles, which means energy was emitted from them. At the same time the droplets shrank at the equator, which can be seen from more narrowly spaced diffraction lines.

Author: Ph.D, Holistic Research Institute, 1414 Barcelona Dr., Knoxville, TN 37923, USA. e-mail: holisticare1@gmail.com

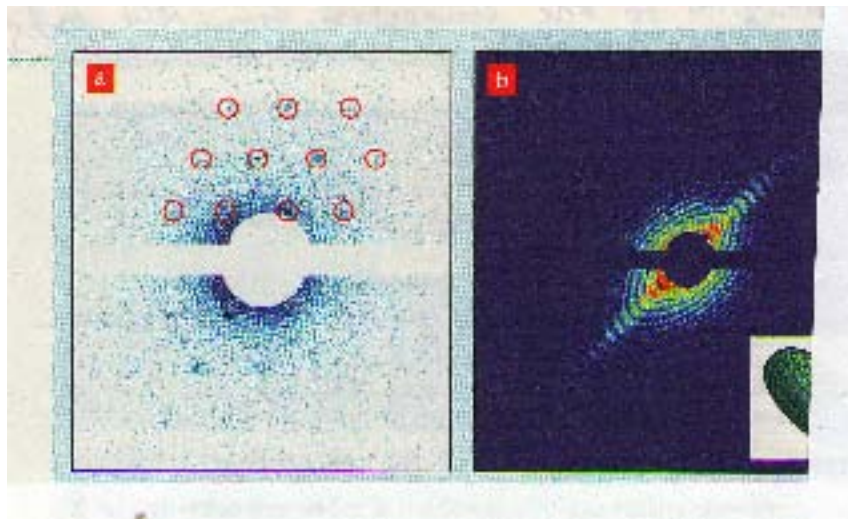


Fig. 1: Panel a: Bragg's lattice from a droplet with torus shape bulged at the equator with quantized vortices in the equatorial area

Panel b: X-ray diffraction reveals elongation along the poles, light emitted through the poles, and shrunk equatorial area. Bragg's scattering was not observed because the turbulence (a series of alternating vortices and anti-vortices) was no longer present

It is easy to understand the misconception of the authors of the nanodroplet research [2], who expected to see the droplet in state b to have the same torus shape as in state a - flattened at the poles and bulged at the equator. However, the fact that Bragg's scattering was not observed (which meant no vortices were present) indicated that something dramatic has happened.

The model provided in my book (M. Kuman, *Same Fields and Dynamics in Stars and Man*) [3] shows, and the X-ray scattering pictured on panel b confirmed, that the droplet has become elongated toward the poles, energy has been released through them, and the turbulence in the equatorial area had ceased to exist. That is why neutron scattering was not observed in state b.

At the end of her article, when Ashley Smart was trying to explain the lack of Bragg's peaks in state b (Fig. 1b), which means lack of vortices and anti-vortices, she cites the authors' opinion [2] that "this could be a sign of new physics". This "new physics" is the already developed nonlinear physics (of Prigogine), which describes dynamic systems.

Non-linear physics need to step in to explain the dynamic. Obviously, there are two distinctly different states: 1/ active cycle (Fig.1a), when the nanodroplets exhibit turbulence in the equatorial area and neutron scattering, and have donut shapes. The observed turbulence in the equatorial area means that the nanodroplets have more energy.

According to nonlinear physics, the vortices spin clockwise and suck energy, while the anti-vortices spin counterclockwise and emit energy. This means that during the active cycle, the donuts must spin clockwise.

To have the observed torus shape, the droplets' both end of the axis of spinning must be vortices sucking energy in. For this to happen, the NEMF of the droplets must be vortex on top of anti-vortex.

The donut shape of the droplets shows that energy has been sucked through both magnetic poles of the axis of spinning. The sucked in energy makes the nanodroplets spin faster and faster, which farther bulges them at the equator. The different angular velocity of spinning at different depth of the droplets would cause the observed turbulence.

2/ Passive cycle (Fig. 1b), in which turbulence and neutron scattering was no longer observed. This means that the extra energy causing the fast spinning and the turbulence during the active cycle has been lost. Indeed, the X-rays diffraction on Fig. 1b revealed emission of energy through both ends of the axis of spinning, which shrank the droplets at the equator and ended the turbulent activity.

This means that the active cycle ends when the bulging at the equator reaches the critical value of pressure, which the substance of the droplets can tolerate. To release the pressure the spinning of the droplets must switch from clockwise to counterclockwise. Then the openings at both ends of the donut's axis of spinning become anti-vortices emitting energy, which explains the observed emission from the poles on Fig. 1b.

II. THE DYNAMIC OF THE HUMAN TORUS-SHAPED NEMF REVEALED THROUGH OUR MEASUREMENTS COMBINED WITH RUSSIAN MEASUREMENTS

The Russian scientist Shkatov patented equipment, called 'torsemeter', which allows him to measure the spinning of the human NEMF [6]. With the torsemeter, he measured how positive emotions (joy, happiness...) increase the spinning of the human's NEMF in positive (clockwise) direction and how negative emotions (anger, hatred, jealousy...) increase the spinning of the human NEMF in negative (counterclockwise) direction [6].

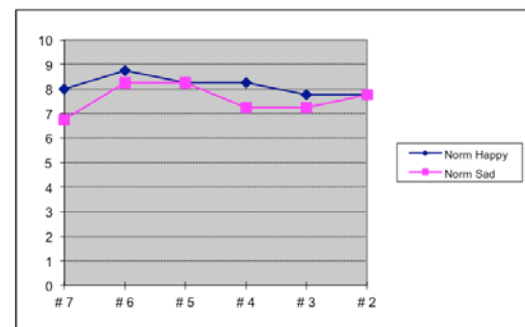
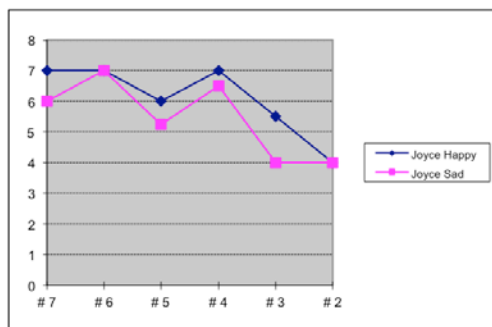
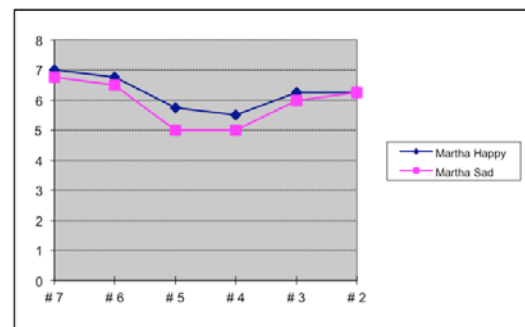
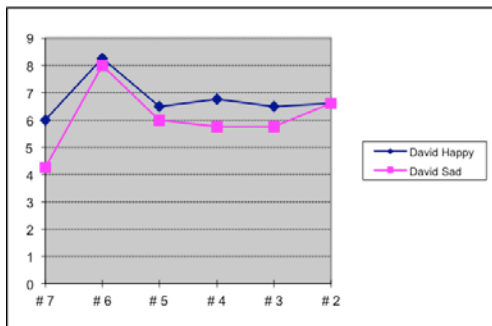
Since in nonlinear physics turbulent spinning in clockwise direction is called vortex and vortices suck energy, energy must be sucked into our NEMF during positive emotions, which would explain the uplifting we feel when experiencing positive emotions.

Since in nonlinear physics turbulent spinning in counterclockwise direction is called anti-vortex and anti-vortices release energy, energy must be released from our NEMF during negative emotions, which would explain the drop in energy we feel when experiencing negative emotions (see the book of the author M. Kuman, *Quantum Mind and Quantum Growth*) [5].

This agrees completely with the measurements on people done with our patented supersensitive equipment, which could measure one millionth of the ampere and less.

1/ We asked people to think about the happiest moments of their life and we measured the energy at the alternating vortices and anti-vortices of their NEMF. We found that positive thoughts increase their energy. We also found that positive thoughts improve the energy balance by filling with most energy the places with lowest energy (just like a river would fill with most water the lowest places). Since improved energy balance means improved health, positive thoughts make you healthier (see Fig. 2, see also [5]).

2/ We asked people to think about the saddest (most unhappy) moments of their life and we measured their energy at the alternating vortices and anti-vortices of their NEMF. We found that negative thoughts not only decrease the energy, they worsen the energy balance. When speaking with the measured people, it became obvious that the genetically inherited weak organ with lowest energy was dropping in energy maximum. This means that each negative thought takes you a step farther to a disease of the genetically inherited weak organ. In other words, negative thoughts make you sicker (Fig. 2) (see also [5]).



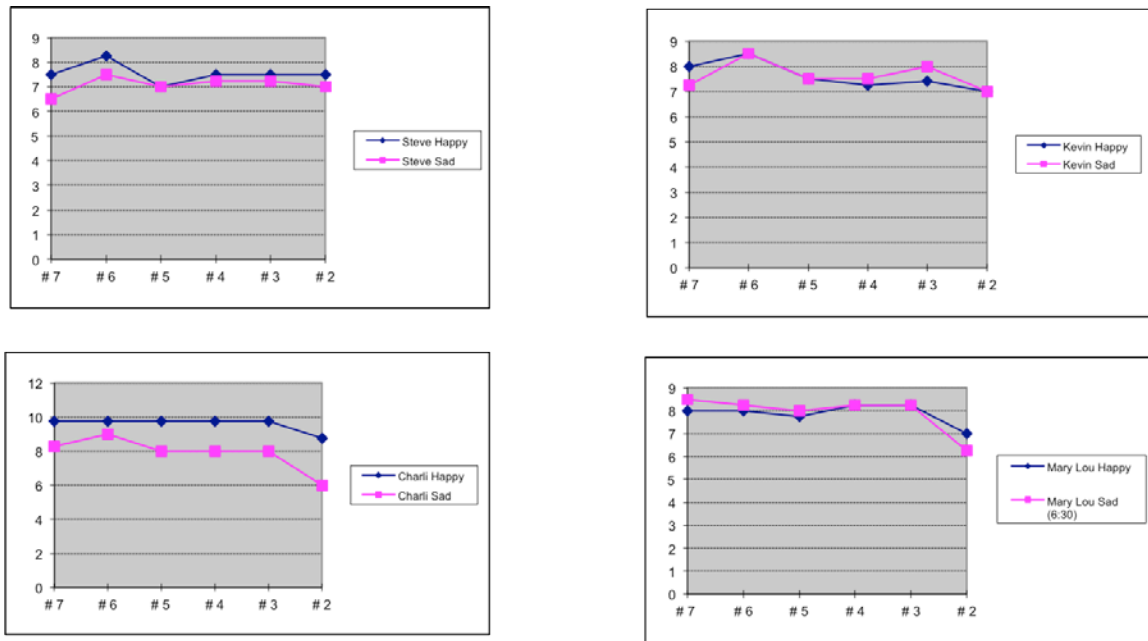


Fig. 2: The electrical measurements done with our patented sensitive energy meter showed that: positive emotions or just positive thinking (blue lines) increases the human energy and improves the energy balance, which makes the positive-thinking person healthier. Negative emotions or just negative thinking (pink lines) decrease the human energy and worsen the energy balance, which is a step toward a disease

When David was sad (negative thinking), his heart dropped in energy maximum and he said that both his parents died of heart attack. The same was for Norm, who said that his father was a negative thinker and died of heart attack. When Joyce was sad, her stomach dropped in energy maximum and she said she know this because each time she gets upset, her stomach gets upset.

When Charlie was sad, his prostate dropped in energy maximum, but he didn't have any complains yet. However, I met Charlie ten years after I did the measurements and asked him how is his prostate. He smiled and said: "Gone for good." I asked him what does this mean. He said: "It started creating troubles and they removed it."

When Martha was sad, her Thyroid Gland dropped in energy maximum and she said her mother had thyroid problem. So, it became obvious that when the people were sad or upset their genetically inherited weak organ was the one that drop in energy maximum. This is in full agreement with the explanation of Selye that the same stress causes different diseases in different individuals because the stress cracked the weakest place – the genetically inherited weak organ, which was different for different individuals.

Reiki healers and their patients were also measured with our supersensitive equipment (Fig. 3). Reiki healing is energy healing and 'Rei-ki' means 'universal energy'. They claim they heal with hands, but they don't use their energy to heal. They channel Universal energy to the bodies of the patients. Our

electrical measurements showed that after Reiki healing not only was the energy of the patient higher and more balanced, the energy of the healer was higher and more balanced. This is possible only if a third source of energy is involved (Fig. 3) [4], [5].

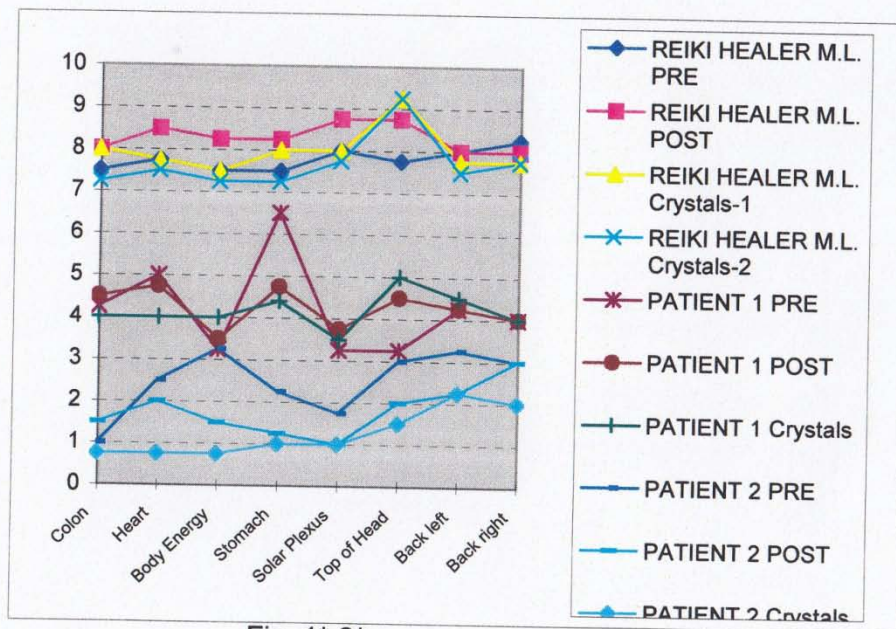


Fig. 1*-2*

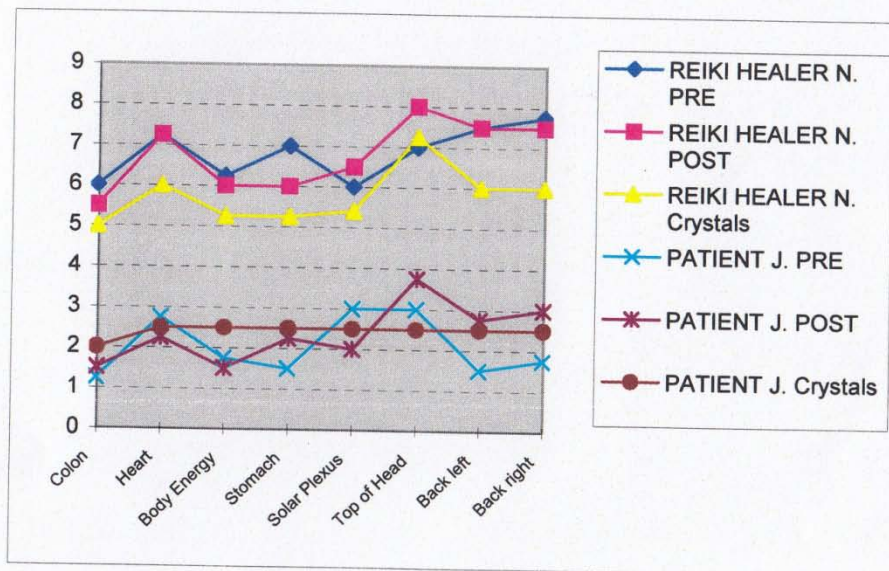


Fig. 3*

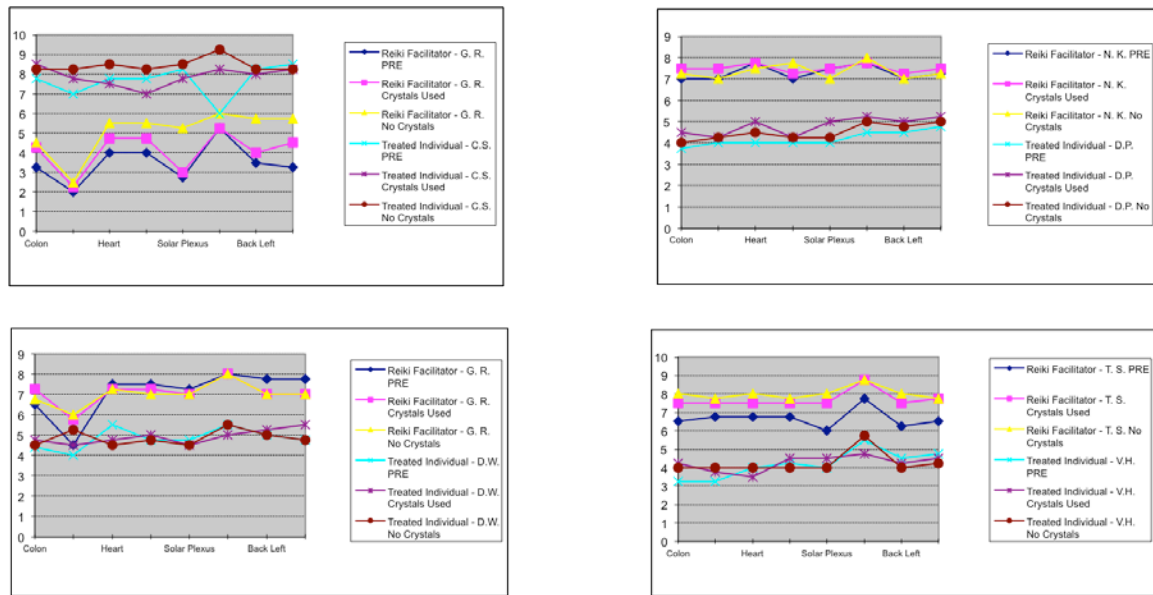


Fig. 3: We also noticed that after each Reiki healing the energy was higher on the top of the head of the Reiki Healers, where the acupuncture point Bai Hwei (Point of Union) is. On the horizontal axis of Fig. 3, this point is between the points of Solar Plexus and Back Left. The increase of energy at point Bai Hwei indicates that the top of the head was the portal point, through which the Universal energy was entering the body of the healer (Fig. 3)

Since the axis of spinning of the donut (shaped NEMF) starts at the top of the head and finishes at the tailbone (Fig. 4), obviously the Reiki Healers suck electrical energy from the atmosphere (Universal energy) through the top of their head. This is where the upper opening of the hole of their donut shaped NEMF is [4], [5].

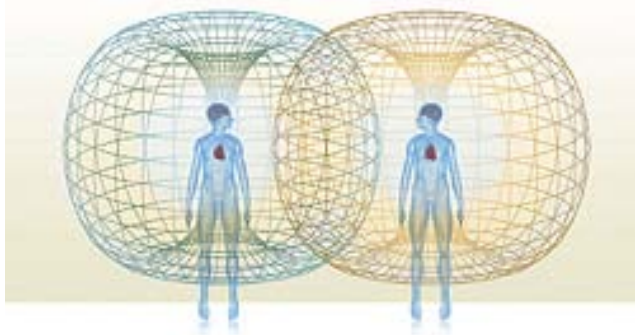


Fig. 4: The donut shaped human NEMF of the heart as measured by the Heart Math Institute in California [7] (adopted from their webpage)

The frequency of the electric field of the atmosphere is 8 Hz and the measured frequency of the energy emitted from the hands of Reiki Healers was found to be 5 to 20 Hz in Japan [8], and 0.3 to 30 Hz in the US [9], which includes the frequency 8 Hz. Therefore, the Reiki Healers draw energy from the atmosphere through the top of their heads.

To check how the energy, received by the Reiki Healers through the tops of their heads, is delivered through their hands to the patients, Reiki Healers were asked to hold one hand on the Solar Plexus (one inch

under the ribs conjunction in front of the body), while healing with the other hand. We found that energy was not delivered to the patient.

However, energy was delivered if the hand, instead of being on the Solar Plexus, was hanging down. Therefore, the energy sucked through the top opening of the donut shaped NEMF of the Reiki Healers is delivered to their hands and to the patients through their solar plexus (which is in the middle of the donut's axis of spinning) (vortex 3 on Fig. 5).

Let us combine the measurements done with our patented supersensitive equipment with the spinning measurements, which Dr. Shkatov in Russia did on humans with his patented torsemeter [6]. The comparison reveals the following dynamic of the human NEMF:

Positive thinking and positive emotions make the human NEMF spin faster in clockwise direction, at which the vortex point on top of the head (at top hole of the donut shaped NEMF) sucks energy in. This energy increase explains the uplifting we feel at positive emotions or just positive thinking.

When we are happy, we have the feeling that time runs faster. Since happy thoughts or feelings make the donut shaped NEMF spin faster, this faster spinning obviously creates the perception of faster running time. When Einstein was asked what relativistic time is, his joking answer was: if you sit and chat with a young beautiful girl, two hours can feel as 2 minutes, but if you have to sit two minutes on a hot stove, two minutes can feel like two hours.

Here is our serious explanation of the joking answer of Einstein: when we feel uplifted or happy two

hours can feel as two minutes because our donut shaped NEMF spin clockwise faster, which creates the perception of fast running time. Also, the faster spinning of the donut makes energy to be sucked through the hole of the donut, which determines our feeling of being uplifted when happy.

Negative thinking and negative emotions make the human NEMF spin counterclockwise, at which the

anti-vortex point on top of the head (at the center of the donut shaped NEMF) emits energy. This energy release explains our feeling of low energy after negative emotions or just negative thinking. I have seen Kirlian photos (in Russian sources) of angry people, on which one can see energy emitted from the top of the head like lightening.

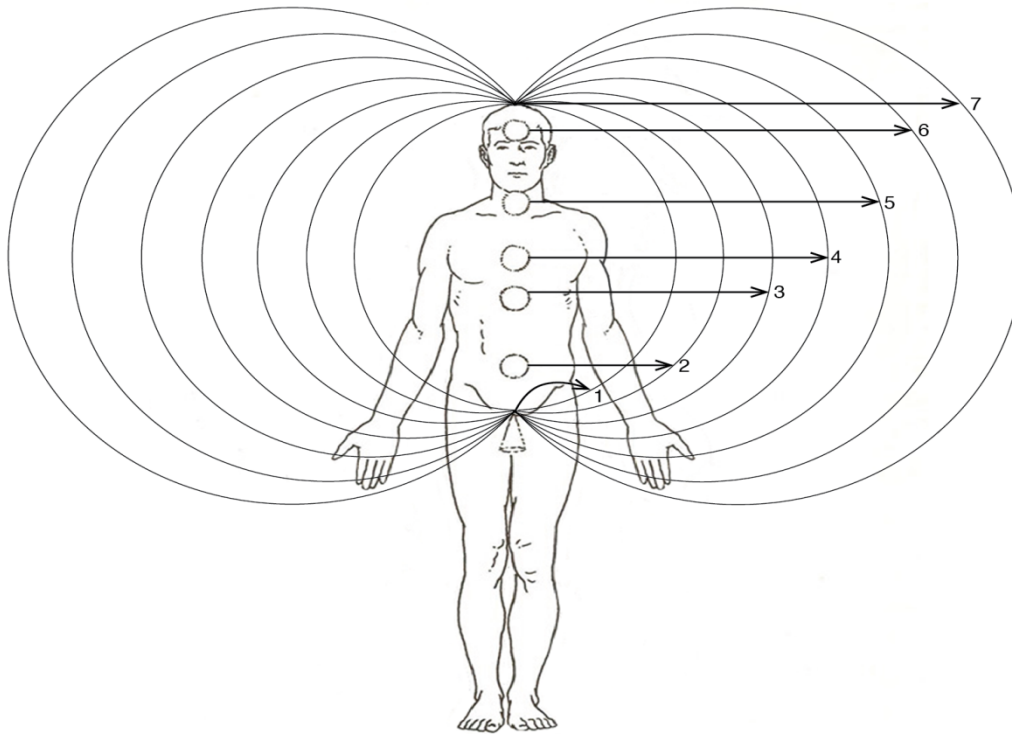


Fig. 5: Pictured are the seven basic discrete quantum levels of the human donut-shaped nonlinear EMF and their relation to the 6 alternating vortices and anti-vortices in the middle of the body. This illustrates that discrete quantum energy levels are present when turbulence is present. Possible are 5 more discrete quantum levels 8, 9, 10, 11, and 12, which are a light ball over the top of the head at a growing height. (Fig. 6 pictures the active energy level 9 [4])

III. QUANTUM LEVELS SEEM TO BE SPECIFIC FOR ALL SYSTEMS EXHIBITING TURBULENCE

Thus, not only are the energy levels of elementary particles, atoms, and molecules discrete or quantized, the human nonlinear EMF has discrete energy levels, just like the atoms of which our material body consists. Also, looking at the radiation belts of our Earth we see discrete levels (Fig.6) and looking at our Sun we see discrete orbits (Fig. 7). Even the rings of Saturn are discrete. And so is the human NEMF– our energy levels are discrete (Fig. 5) (See also the book of M. Kuman, *Quantum Mind and Quantum Growth*) [4].

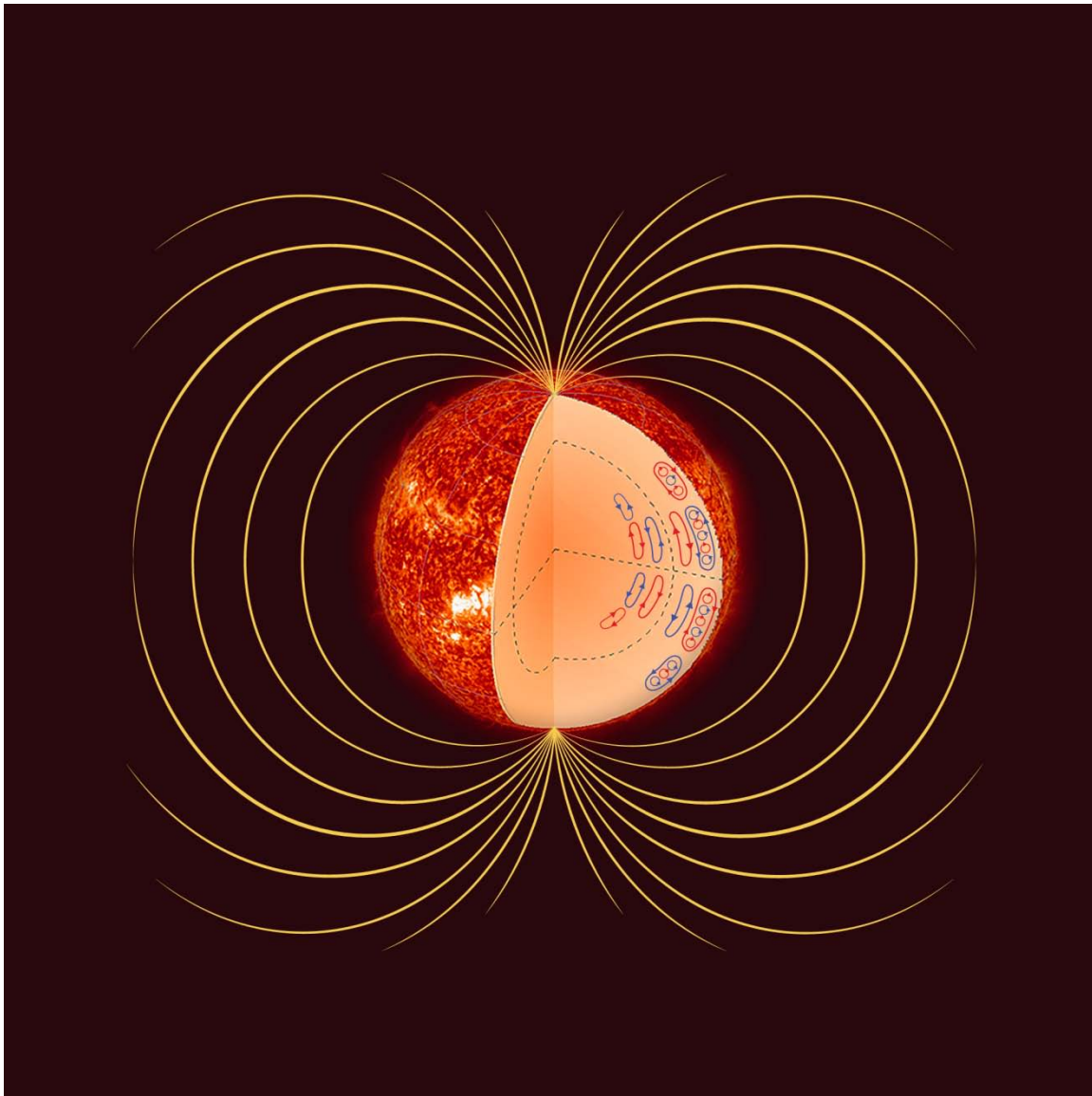


Fig. 6: Sun's torus-shaped nonlinear EMF (vertical cross-section). Visible are the ring currents induced by the sun's spinning, which crank the magnetic field

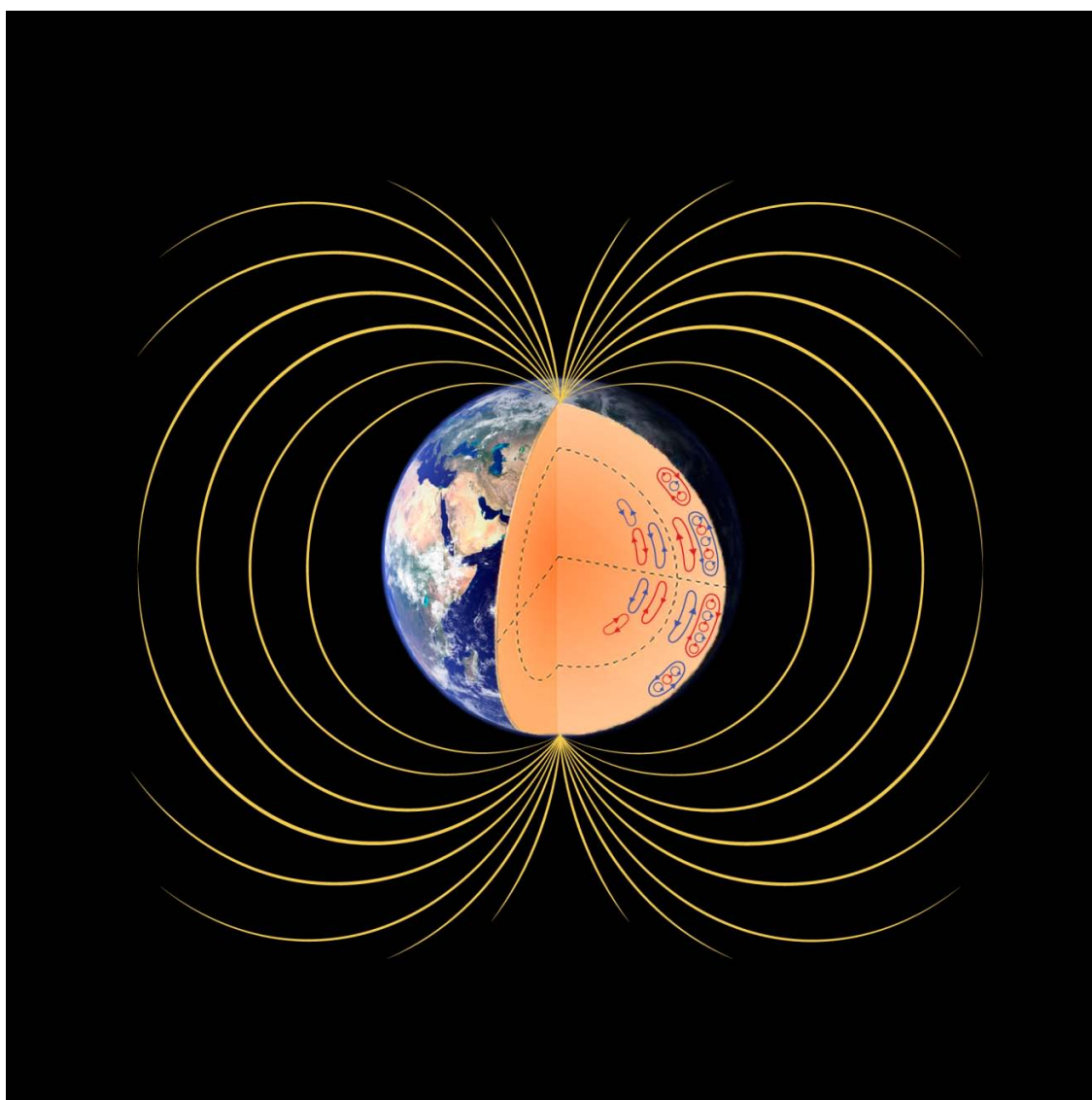


Fig. 7: Earth's torus-shaped nonlinear EMF (vertical cross-section). Visible are the ring currents induced by the earth's spinning, which crank the magnetic field

IV. PHOTOGRAPHING THE HUMAN NEMF

The light of the human Nonlinear Electromagnetic Field (NEMF) is too weak to be photographed, but when high frequency electric field is used, which multiplies manifold the light of the weak human NEMF, it can be photographed and it is called Kirlian photography. These photographs are named after the Ukrainian scientist Kirlian, who we think was the 'first' to photograph the light of the human NEMF, called aura. The Kirlian photography became very popular in the 1960s [10].

However, almost 100 years before Kirlian the German Baron Karl von Reichenbach (born in 1788 in Stuttgart) first observed and photographed the human light in 1861 [11]. Baron von Reichenbach called the body light 'od' energy from Wodin = 'All Transcending One'. It meant that the light energy was all penetrating,

which in the terminology of modern nonlinear physics means nonlinear light energy.

Baron von Reichenbach called the photos of this 'od' energy 'odographs'. However, the achievements of Baron von Reichenbach were crossed out with the crossing of Mesmerism. We refused to believe the claims of Mesmer that he can heal with magnets, just as we refused to believe that the light around human body could be photographed.

But the words of the Baron must not be forgotten:

*"Everything then emits LIGHT...everything...everything.
We live in a world full of SHINING MATTER."*

Fechner said after Baron von Reichenbach passed away:

*"The world we sit in would be dark and cold,
if we will not open our eyes inward to the Spirit
and to the internal flame of Nature."*

Now we called these photographs Kirlian photography. Below on Fig. 8 is the Kirlian photography of the author:



Fig. 8: Kirlian photography of the author taken in 1991

V. THE STARS' TORUS SHAPED NEMF AND THEIR DYNAMIC (INCLUDING SOLAR DYNAMIC)

The dynamic of nanodroplets seems to be typical for all torus-shaped electromagnetic fields [12]. If so, the dynamics of helium nanodroplets could also explain the dynamics of our Sun. During the warm periods on Earth, the sun is active because it spins clockwise and sucks energy in through the two ends of its axis of spinning, which makes the Sun's NEMF and the Sun itself to look like a donut.

The periods of high solar activity alternate with periods of very low solar activity. During the periods of low activity of the Sun (the periods of Ice Ages on Earth), the Sun is not active because it spins counterclockwise and loses energy through the two ends of its axis of spinning. This would make the Sun elongated and looking like a lemon during low solar activity (Fig. 1b).

We know that the sun spins, just as our earth spins. What we don't know yet is: during the periods of high solar activity (warm periods on Earth), the sun must spin clockwise and suck energy in through the two ends of its axis of spinning. This would explain its high activity and its donut shaped form.

During the periods of low solar activity (the cold periods on earth), the Sun must spin counterclockwise and lose energy through the two ends of its axis of spinning, which are opposite magnetic poles. The lost energy would explain the low solar activity (the Ice Ages on earth) when prolonged (toward the magnetic poles) shape of the Sun can be expected.

This is so because according to nonlinear physics when the sun spins clockwise, the vortices at the end of its axis of spinning suck energy in. This increases the speed of spinning, which increases the turbulence, manifested as solar activity. It is observed as solar spots, which are the openings of vortices sucking energy in and anti-vortices throwing energy out.

Therefore, according to nonlinear physics the sun must spin clockwise like a vortex during the periods of high solar activity to be able to suck energy in from its environment. If the solar activity increases when energy is sucked in, the source of solar energy is outside the sun; it is not in the core of the sun, as we presently chose to believe, but there is no evidence supporting this belief [12].

According to nonlinear physics, the sun must spin counterclockwise like an anti-vortex during the periods of low solar activity to be able to release to the environment the accumulated surplus of energy. It is done through the opposite magnetic poles of the donut shaped NEMF of the sun, which are at both ends of the axis of spinning.

Amazingly, in astronomy stars exhibit similar dynamics of sucking or emitting energy through the hole

of their donut shaped NEMF as the helium nanodroplets and the human NEMF do. In double stars, it was observed how the dimmer star was sucking energy from the brighter star through the hole of its donut-shaped NEMF, while the brighter star was losing energy also through the hole of its donut. This was continuing until the energies of both stars became equal [13], [14], [15].

Recently, Sarafina Nance of the University of Texas at Austin claimed in an article published in *Monthly Notices of the Royal Astronomical Society* that the rapid spinning of the famous star Betelgeuse was a result of swallowing another star [13]. The swallowed star was probably sucked through the hole of the donut shaped NEMF of Betelgeuse. This suggestion was based on astronomically observed behavior of double stars, in which the old dimmer star sucks energy from the younger brighter star (done through their donut's holes) until the energy of the two stars becomes equal and they start shining with the same intensity [14], [15].

As seen from measurements with our patented high sensitivity energy meter and the Russian measurements of the human spinning donut-shaped NEMF with their patented 'torsemeter', happy (Fig. 3) or healing (Fig. 4) humans, just like the stars, can suck energy through the top of their head (Fig. 5), (point 7 on Fig.5), where the hole of their donut shaped NEMF is. The sucked energy makes the donut shaped NEMF to spin faster.

VI. CONCLUSIONS

- 1) Since in the nonequilibrium theory the three-dimensional attractor has a donut shape [16], it seems that at all levels: the elementary particles, helium nanodroplets, man, and stars, we have NEMF with the same donut shape.
- 2) At all levels we also see the same dynamics of: a/ sucking energy in from the environment, which increases the turbulent activity, and b/ releasing energy to the environment, which seizes the turbulent activity. These donut shaped NEMF are periodically, cyclically breathing energy in and out. The cyclic dynamics itself can be represented as a two dimensional attractor [16].
- 3) The only way to explain the torus dynamic is to assume that space matrix exists and breathing it in, when spinning clockwise, is the source of energy at all levels. Breathing the space matrix out, when spinning counterclockwise, is returning the space matrix energy back to the environment.
- 4) The fifth-dimensional attractor [16], which is self-organizing, is probably the Creator (Supreme Intelligence), who created all attractors with lower dimensions and everything else.

REFERENCES RÉFÉRENCES REFERENCIAS

1. A. Smart, *Physics Today*, 67, #11, 16 (2014).
2. L.F. Gomez et al. *Science*, 345, 906 (2014).
3. M. Kuman, *Same Fields and Dynamics in Stars and Man*, Health and Happiness Books, 2017.
4. M. Kuman, *Quantum Mind and Quantum Growth*, Health and Happiness Books, 2015.
5. M. Kuman, *Science Speaks of God*, Health & Happiness Books, 2005.
6. V. Tichoplav and T. Tichoplav, *Miroznanie (World View)*, Saint Petersburg, 2012 (Russ.).
7. www.hearthismathinstitute.com
8. Y. Manaka et al., *Chasing the Dragon's Tail*, Paradigm Publications, 1995.
9. S.J. Williamson, *Advances in Biomagnetism*, Plenum Press, Berlin, 1989.
10. S.D. Kirlian, *Method of Photographing Different Objects*, Patent No106401 (USSR) (1949).
11. Gerry Vasilatos, *Lost Science*, Adventures Unlimited Press, 1999.
12. M. Kuman, Dynamic Mathematical Model Describes the Dynamic of Solar Activity, *APS Meeting of March 2016 in Maryland*.
13. S. Nance et al., *Monthly Notices of the Royal Astronomical Society*, 453(3), 2654-2661 (2017).
14. M. Burgay et al., *Nature*, 426, 531-533 (2004).
15. A. G. Lyne et al., *Science*, doi: 10.1126/science.1094645 (2004).
16. M. Kuman, New Light on the Attractors Creating Order out of the Chaos, *International Journal of Complimentary and Alternative Medicine*, 11 (12) 2018.